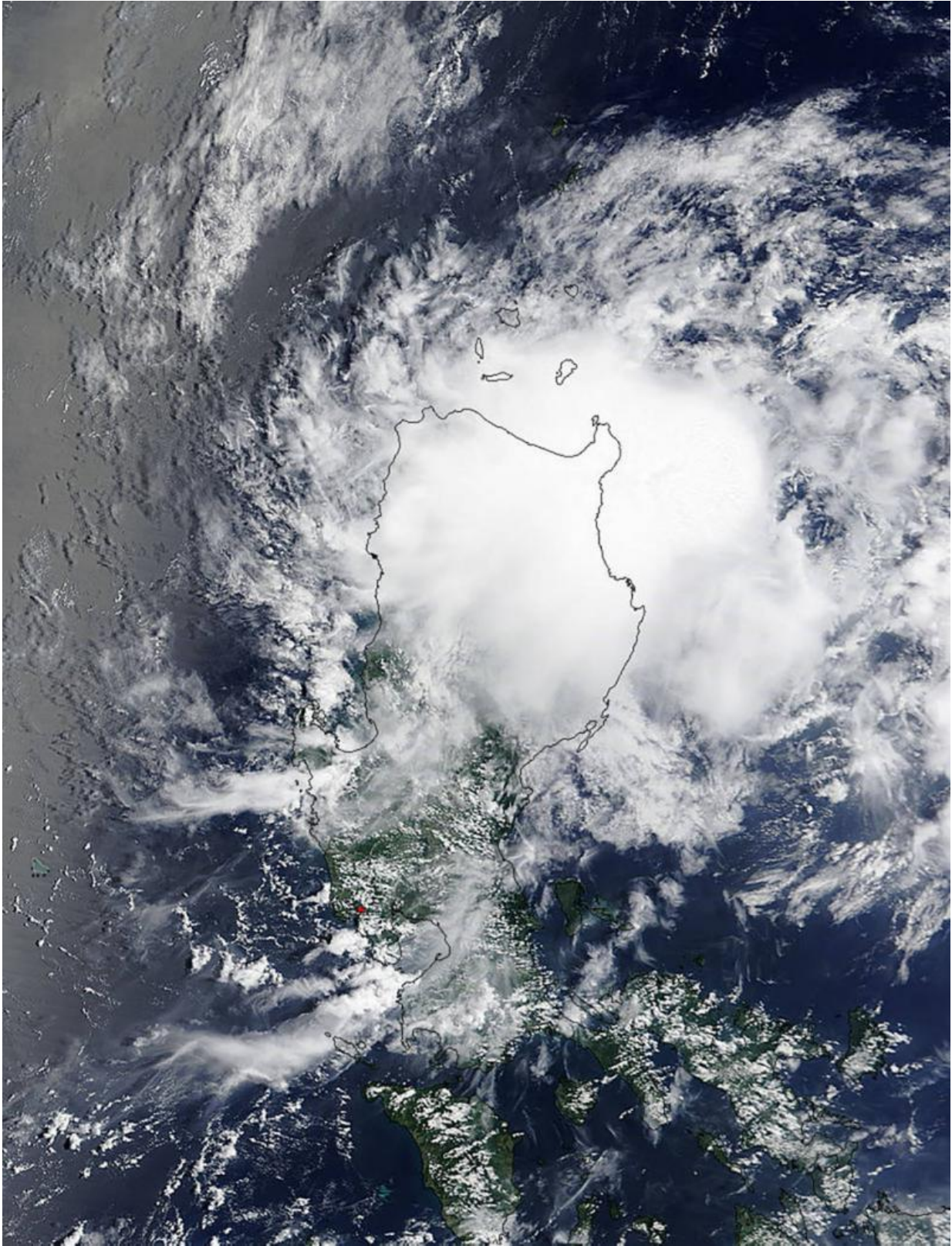


NASA sees Tropical Cyclone 12W grow into a Tropical Storm

July 24 2015



NASA's Terra satellite captured this visible-light image of Tropical Storm 12W

over the northeastern Philippines on July 24, 2015 at 03:00 UTC (July 23 at 11 p.m. EDT). Credit: NASA MODIS Response Team

Tropical Depression 12W (12W) formed on July 23 in the Philippine Sea, near the northeastern tip of the Luzon region of the Philippines. The storm intensified into a tropical storm as NASA's Terra satellite passed overhead at 03:00 UTC (July 22 at 11 p.m. EDT). The Moderate Resolution Imaging Spectroradiometer (MODIS) instrument aboard Terra captured a visible image of the storm that revealed the storm had become more organized with better circulation. Although bands of thunderstorms were not apparent, the storm appeared more circular on the MODIS image. The image was created at NASA's Goddard Space Flight Center in Greenbelt, Maryland, home of the MODIS Rapid Response Team.

At 1500 UTC (11 a.m. EDT) on July 24, 2015, 12W's maximum sustained winds had increased to 40 knots (46 mph/74 kph). 12W is moving slowly at 5 knots (5.7 mph/9.2 kph). It was centered near 17.7 North latitude and 124.6 East longitude, about 270 nautical miles (310.7 miles/500 km) north-northeast of Manila, Philippines.

Tropical Storm 12W is forecast to turn to the north and weaken to a depression, weakening under the influence of powerful Typhoon Halola to the northeast.

Provided by NASA's Goddard Space Flight Center

Citation: NASA sees Tropical Cyclone 12W grow into a Tropical Storm (2015, July 24) retrieved 24 April 2024 from <https://phys.org/news/2015-07-nasa-tropical-cyclone-12w-storm.html>

This document is subject to copyright. Apart from any fair dealing for the purpose of private study or research, no part may be reproduced without the written permission. The content is provided for information purposes only.