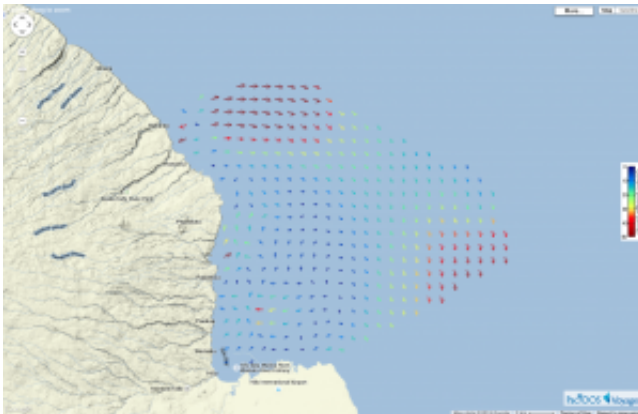


# Ocean surface currents now being measured in near real-time off Hilo

June 22 2015

---



PacIOOS now provides ocean surface currents off Hilo in near real-time.

A new data set of the direction and speed of ocean surface currents in Hilo Bay is now available online. The hourly data updates are accessible to the public and free of charge on "Voyager," the interactive mapping platform of the Pacific Islands Ocean Observing System or PacIOOS.

Mapping ocean surface currents in near real-time provides valuable data for search and rescue operations by narrowing down the possible location of a missing person or vessel. The new data set also helps to forecast the distribution of oil or hazardous material spills and is therefore crucial to plan an adequate response. Marine navigation can benefit from near real-time surface currents for safe navigation. Other examples of surface currents data usage include water quality monitoring

and forecast modeling.

Said Jason Adolf, Associate Professor and Chair of the Marine Science Department at the University of Hawai'i at Hilo, "We are excited about the new [ocean surface](#) current data for Hilo. It complements the PacIOOS wave buoy and water quality buoy off Hilo Harbor. Providing data on ocean and water conditions, including waves and surface currents, in near real-time improves decision-making for [ocean](#) users, managers and responders. With the new data set we can also develop educational activities for the marine science curriculum at UH Hilo and raise public awareness in partnership with Mokupāpapa Discovery Center."

Maps of [surface currents](#), generated by remote sensors on land, are available across the United States as part of a larger network supported by the U.S. Integrated Ocean Observing System (IOOS).

**More information:** Direct Link to Surface Currents on PacIOOS Voyager: [oos.soest.hawaii.edu/pacioos/voyager/ad:2:1:v112a1c0m0x50](https://oos.soest.hawaii.edu/pacioos/voyager/ad:2:1:v112a1c0m0x50)

Provided by University of Hawaii at Manoa

Citation: Ocean surface currents now being measured in near real-time off Hilo (2015, June 22) retrieved 24 April 2024 from

<https://phys.org/news/2015-06-ocean-surface-currents-real-time-hilo.html>

<p>This document is subject to copyright. Apart from any fair dealing for the purpose of private study or research, no part may be reproduced without the written permission. The content is provided for information purposes only.</p>
--