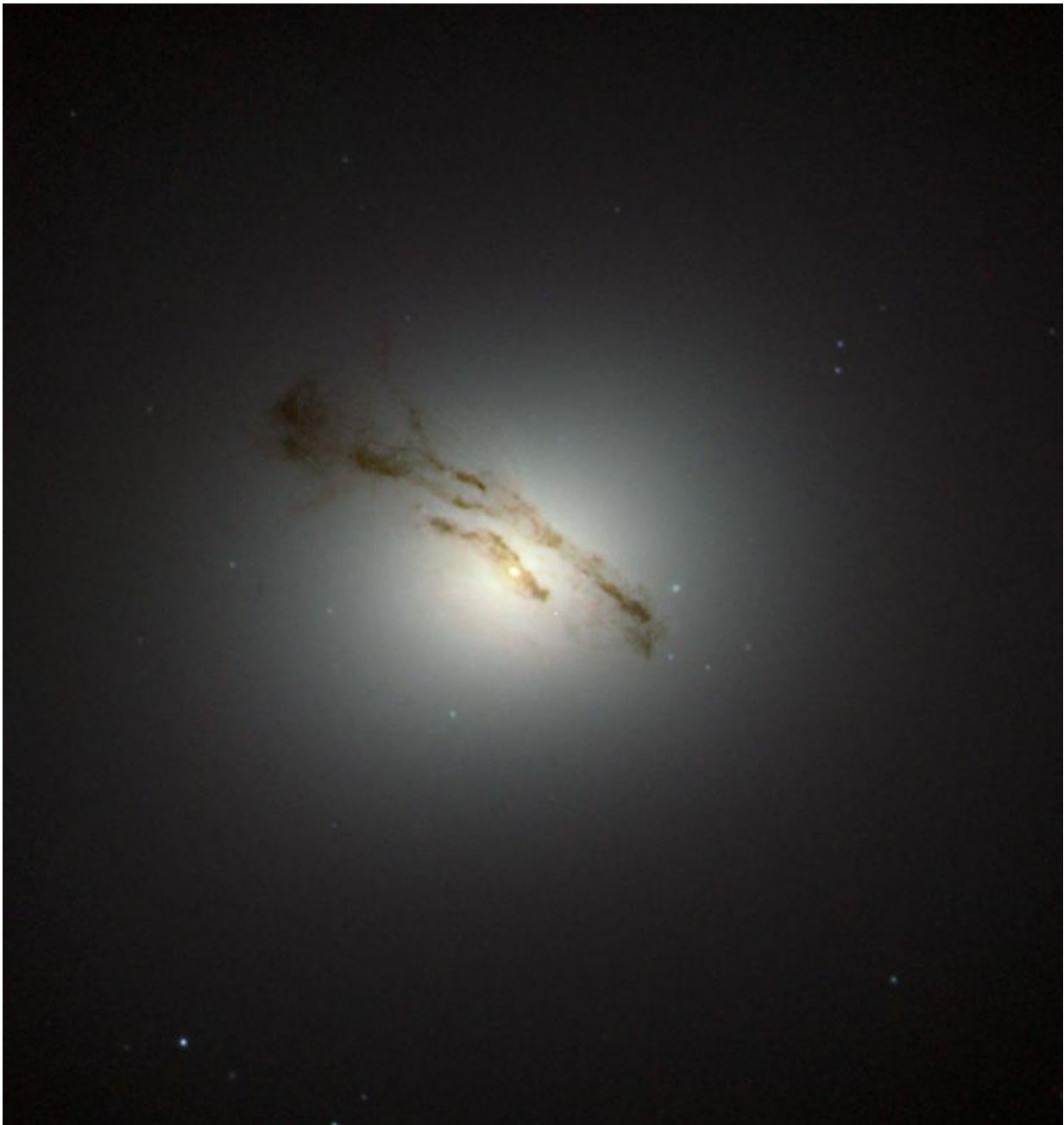


Image: Hubble sees a fascinating galactic core

June 8 2015



Credit: ESA/Hubble & NASA

This elliptical galaxy was discovered in March 1781 and lies about 60 million light-years away from Earth in the constellation of Virgo (The Virgin). The galaxy is part of the very heavily populated center of the Virgo Cluster, a cluster which consists of more than 1,000 galaxies.

This image does not show the whole galaxy but only its very interesting center with intriguing dust lanes that stretch across it. This is likely to be the best image of the region ever captured. Previous observations using Hubble's Space Telescope Imaging Spectrograph (STIS) revealed a [supermassive black hole](#) in the center of Messier 84. Astronomers found the supermassive black hole by mapping the motion of the gas and the stars which are caught in its grip.

Next to its interesting center Messier 84 is also known for its supernovae. Two [supernovae](#) have been observed within the galaxy. The first, SN1957, was discovered in 1957 and another, called SN1991bg, was discovered in 1991.

Provided by NASA

Citation: Image: Hubble sees a fascinating galactic core (2015, June 8) retrieved 19 April 2024 from <https://phys.org/news/2015-06-image-hubble-fascinating-galactic-core.html>

This document is subject to copyright. Apart from any fair dealing for the purpose of private study or research, no part may be reproduced without the written permission. The content is provided for information purposes only.