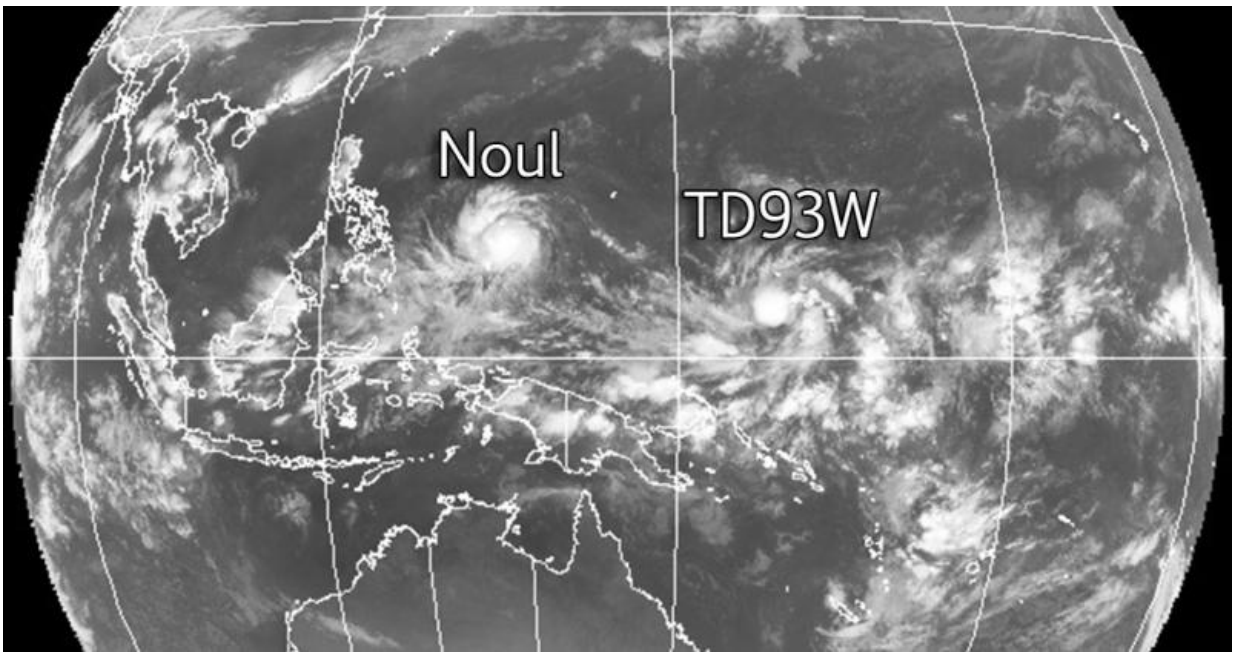


Tropical Depression 93W forms near Micronesia

May 6 2015



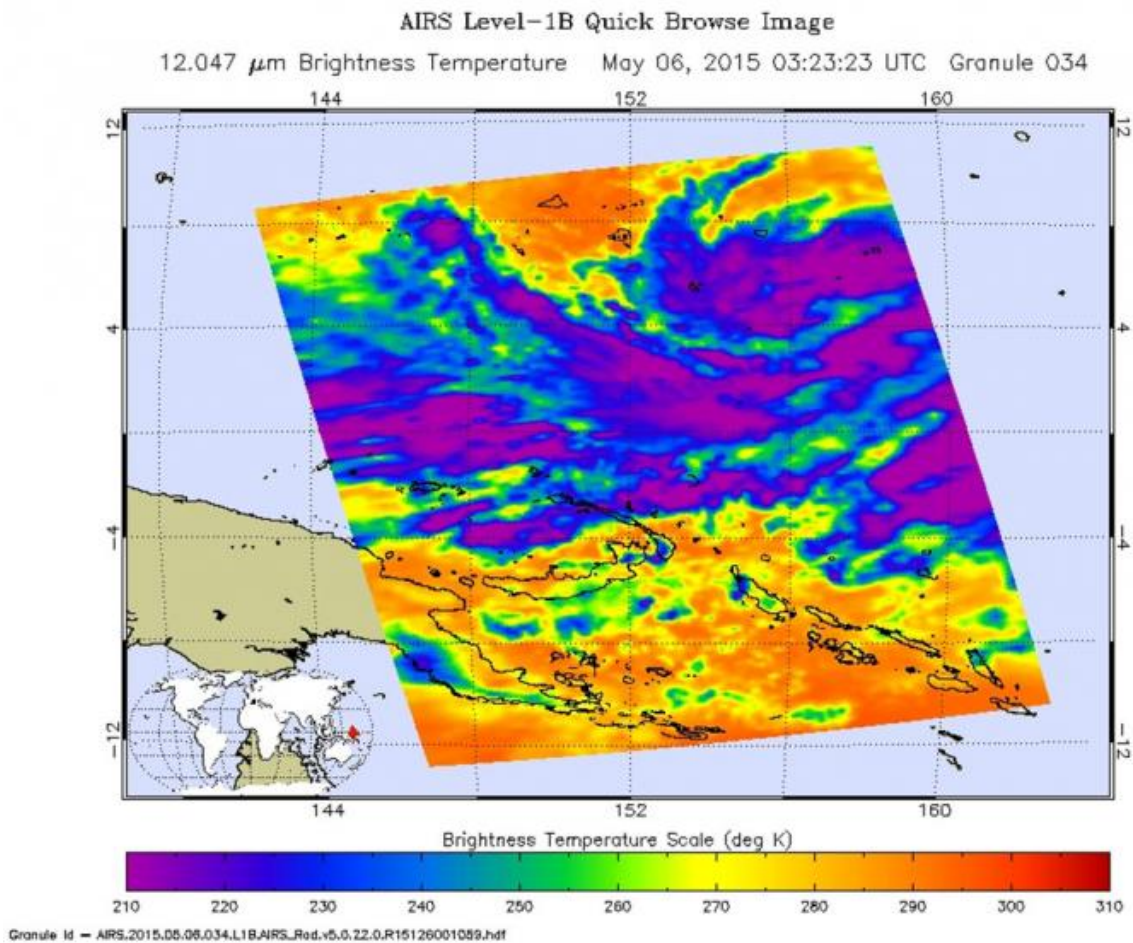
This satellite image from MTSAT-2 shows Typhoon Noul followed by tropical depression 93W. The MTSAT provides imagery for the Northern Hemisphere every thirty minutes, and full-disk imagery every hour. Credit: Japan Meteorological Agency

Tropical Depression 93W formed on May 6, 2015 trailing on the heels of Typhoon Noul. Currently the storm is 155 miles south southeast of Pohnpei.

Pohnpei whose name means "upon a stone altar" is the name of an island of the Senyavin Islands which are part of the larger Caroline Islands group.

It belongs to Pohnpei State, one of the four states in the Federated States of Micronesia.

Maximum sustained [surface winds](#) are estimated at 17 - 22 knots (19.5 - 25 mph). The likelihood TD93W transitioning from a [tropical depression](#) to a typhoon in the next six to 24 hours is high.



On May 06, the AIRS instrument aboard NASA's Aqua satellite saw cloud top

temperatures as cold as 210 kelvin/-63.1F/-81.6C (purple) in powerful thunderstorms within Tropical Depression 93W. Credit: NASA JPL/Ed Olsen

Provided by NASA's Goddard Space Flight Center

Citation: Tropical Depression 93W forms near Micronesia (2015, May 6) retrieved 2 May 2024 from <https://phys.org/news/2015-05-tropical-depression-93w-micronesia.html>

This document is subject to copyright. Apart from any fair dealing for the purpose of private study or research, no part may be reproduced without the written permission. The content is provided for information purposes only.