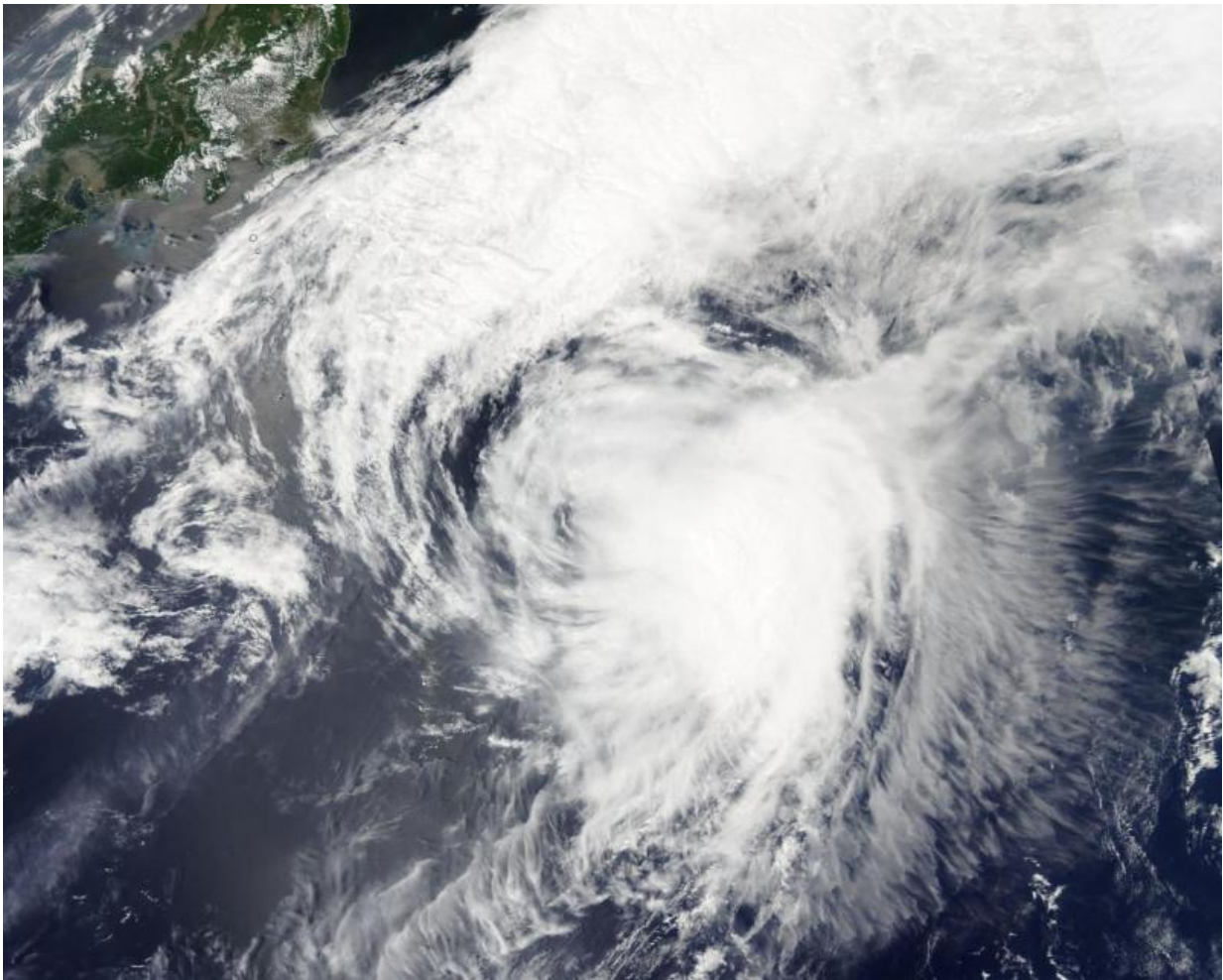


NASA sees Extra-Tropical Storm Dolphin moving toward Sea of Okhotsk

May 20 2015, by Rob Gutro



This visible light image of Extra-Tropical Storm Dolphin was captured by the MODIS instrument aboard NASA's Aqua satellite on May 20. Credit: Credits: NASA Goddard MODIS Rapid Response Team

Tropical Storm Dolphin transitioned into an extra-tropical storm and NASA's Aqua satellite captured an image of the storm on its way toward the Sea of Okhotsk.

The Moderate Resolution Imaging Spectroradiometer or MODIS instrument that flies aboard Aqua captured a visible light image of Extra-Tropical Storm Dolphin on May 20. The image showed that the bulk of clouds and showers were pushed east of the center as a result of its interaction with the westerlies (winds).

When a tropical cyclone becomes extra-tropical it has lost its "tropical" characteristics. According to the National Oceanic and Atmospheric Administration, the term "extra-tropical" implies both poleward displacement (it moves closer to the north or south pole depending on what hemisphere it is located in) of the cyclone and the conversion of the cyclone's primary energy source from the release of latent heat of condensation to baroclinic (the temperature contrast between warm and cold air masses) processes. It is important to note that cyclones can become extra-tropical and still retain winds of hurricane or [tropical storm](#) force.

On May 20 at 1550 UTC (11:50 a.m. EDT), Extra-tropical Storm Dolphin was located near 34.7 north latitude and 150.2 east longitude, east of Japan. Extra-tropical Storm Dolphin had maximum sustained winds near 55 knots and was weakening. It was moving to the north-northeast at 38 knots (70 kph).

Dolphin was moving to the northeast passing south of the Sea of Okhotsk and is expected to turn to the north, tracking east of Russia's Kamchatka Peninsula while continuing to weaken.

For updates on the remnants of Dolphin, visit:
<http://www.jma.go.jp/en/typh/>

Provided by NASA's Goddard Space Flight Center

Citation: NASA sees Extra-Tropical Storm Dolphin moving toward Sea of Okhotsk (2015, May 20) retrieved 24 April 2024 from <https://phys.org/news/2015-05-nasa-extra-tropical-storm-dolphin-sea.html>

This document is subject to copyright. Apart from any fair dealing for the purpose of private study or research, no part may be reproduced without the written permission. The content is provided for information purposes only.