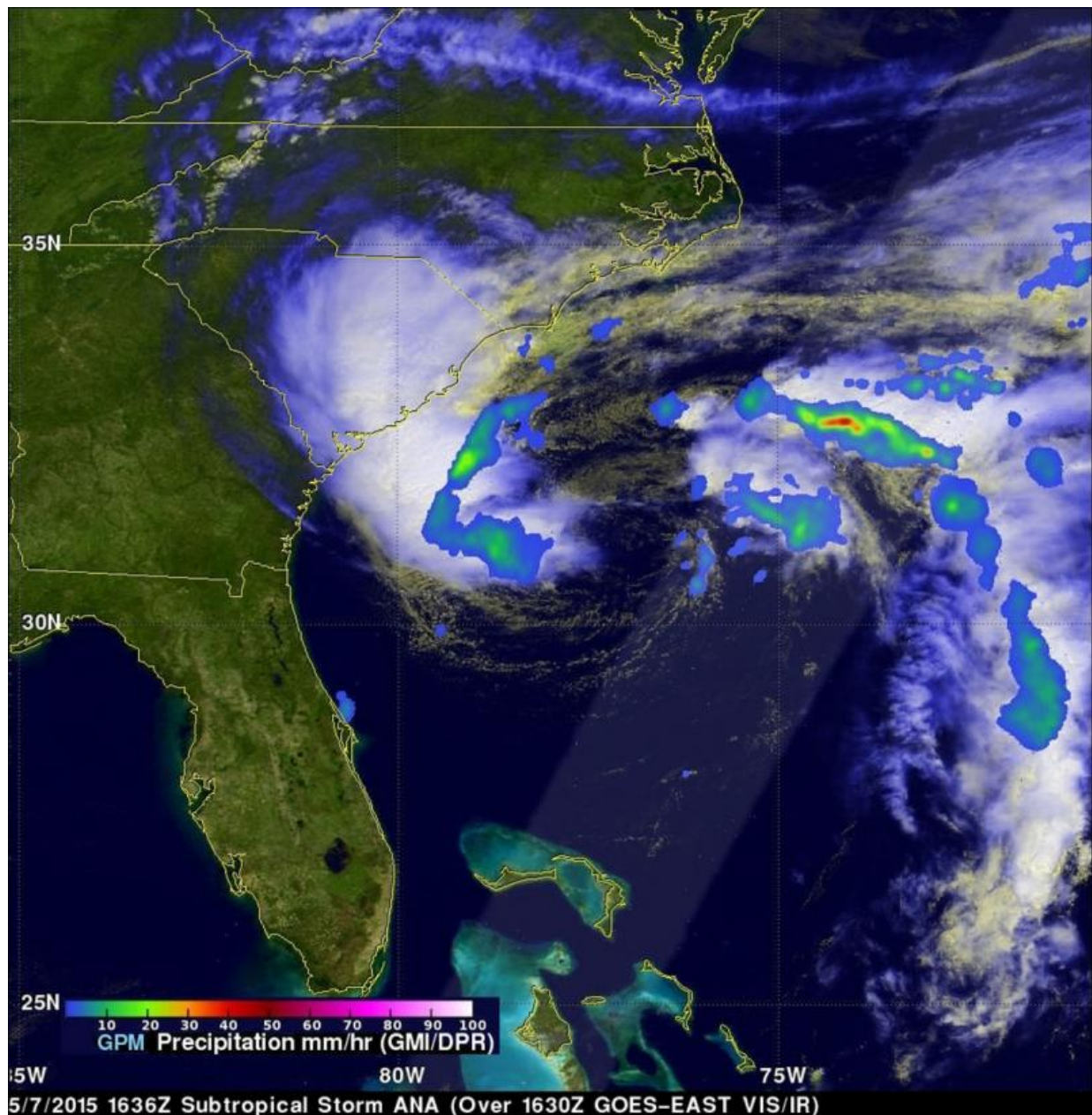


GPM and Suomi-NPP fly above subtropical storm Ana

May 8 2015, by Lynn Jenner

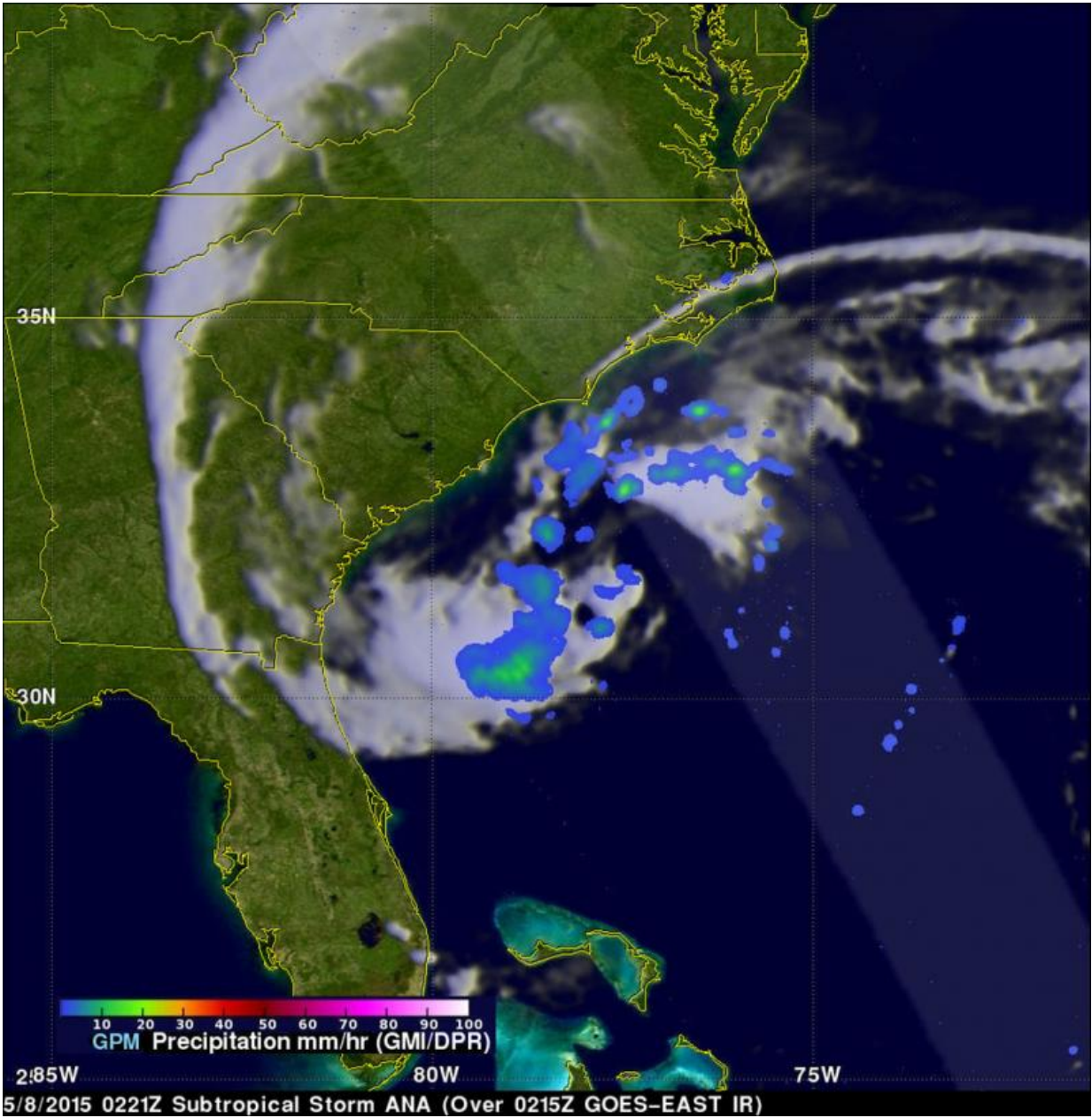


GPM image of Ana. Credit: NASA/SSAI, Hal Pierce

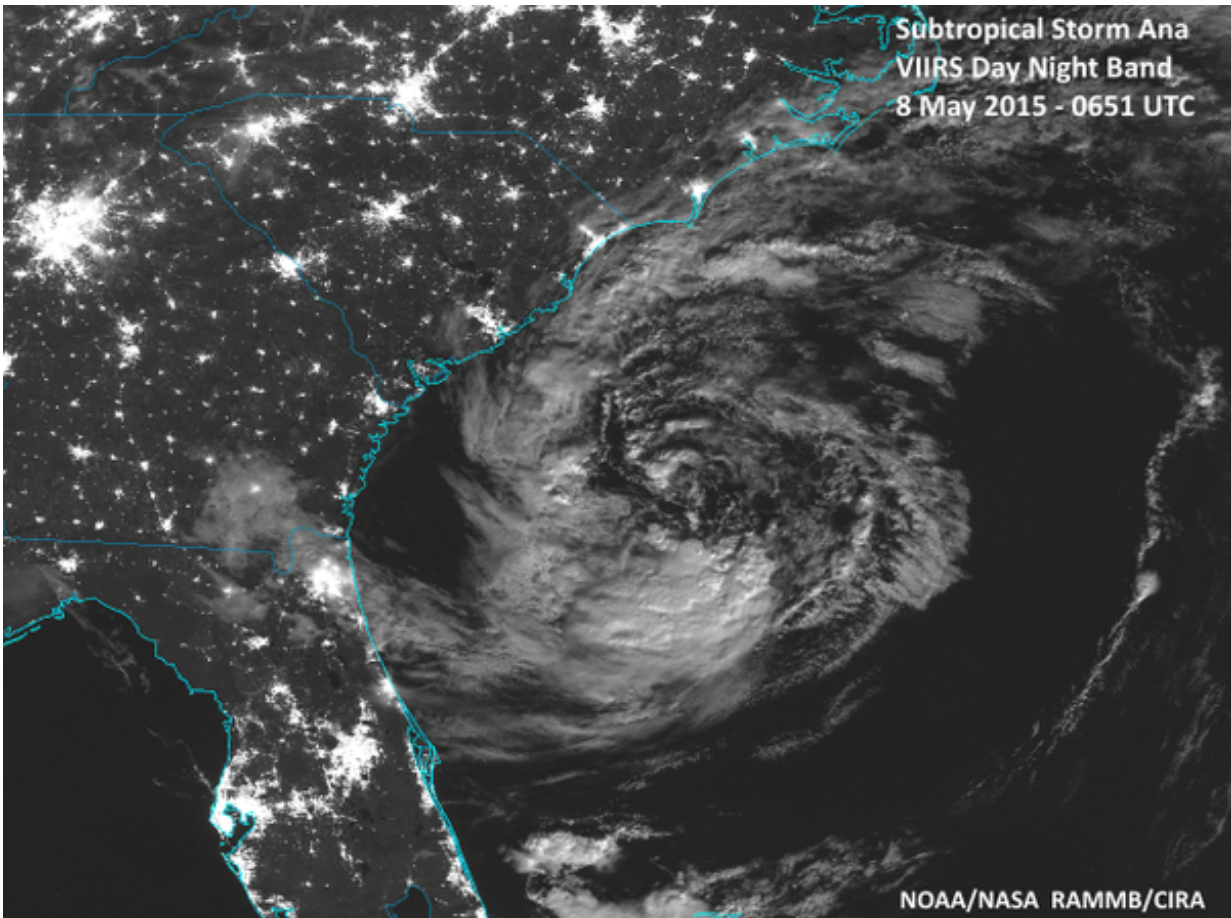
During the past few days subtropical storm ANA was developing off the southeastern coast of the United States. Yesterday and today the GPM core observatory satellite had two good views of subtropical storm ANA. The image above shows the developing subtropical storm on May 7, 2015 at 1636 UTC (12:36 PM EDT). This GPM pass occurred a little over 10 hours before the National Hurricane Center (NHC) issued their first advisory at 0300 UTC (11:00 PM EDT). This image shows rainfall derived from GPM's Ku/Ka-band Dual-frequency Precipitation Radar (DPR) and a multi-channel GPM Microwave Imager (GMI) instruments.

GPM flew over developing [subtropical storm](#) ANA again on May 8, 2015 at 0221 UTC (May 7, 2015 10:21 PM EDT). Those GPM data showed light to moderate rainfall near ANA's center as the storm moved closer to the Southeast coastline. The National Hurricane Center (NHC) indicates that ANA is showing signs of transforming into a weak tropical storm while moving toward the northwest.

GPM wasn't the only satellite that saw Ana forming. Suomi-NPP also saw Tropical Storm Ana as she transitioned from Tropical Low to Tropical Storm.



This image is from May 8, 2015. Credit: NASA/SSAI, Hal Pierce



Suomi-NPP Image of Ana. Credit: NASA/NOAA/GSFC/Suomi NPP/VIIRS

Provided by NASA's Goddard Space Flight Center

Citation: GPM and Suomi-NPP fly above subtropical storm Ana (2015, May 8) retrieved 20 April 2024 from <https://phys.org/news/2015-05-gpm-suomi-npp-subtropical-storm-ana.html>

This document is subject to copyright. Apart from any fair dealing for the purpose of private study or research, no part may be reproduced without the written permission. The content is provided for information purposes only.