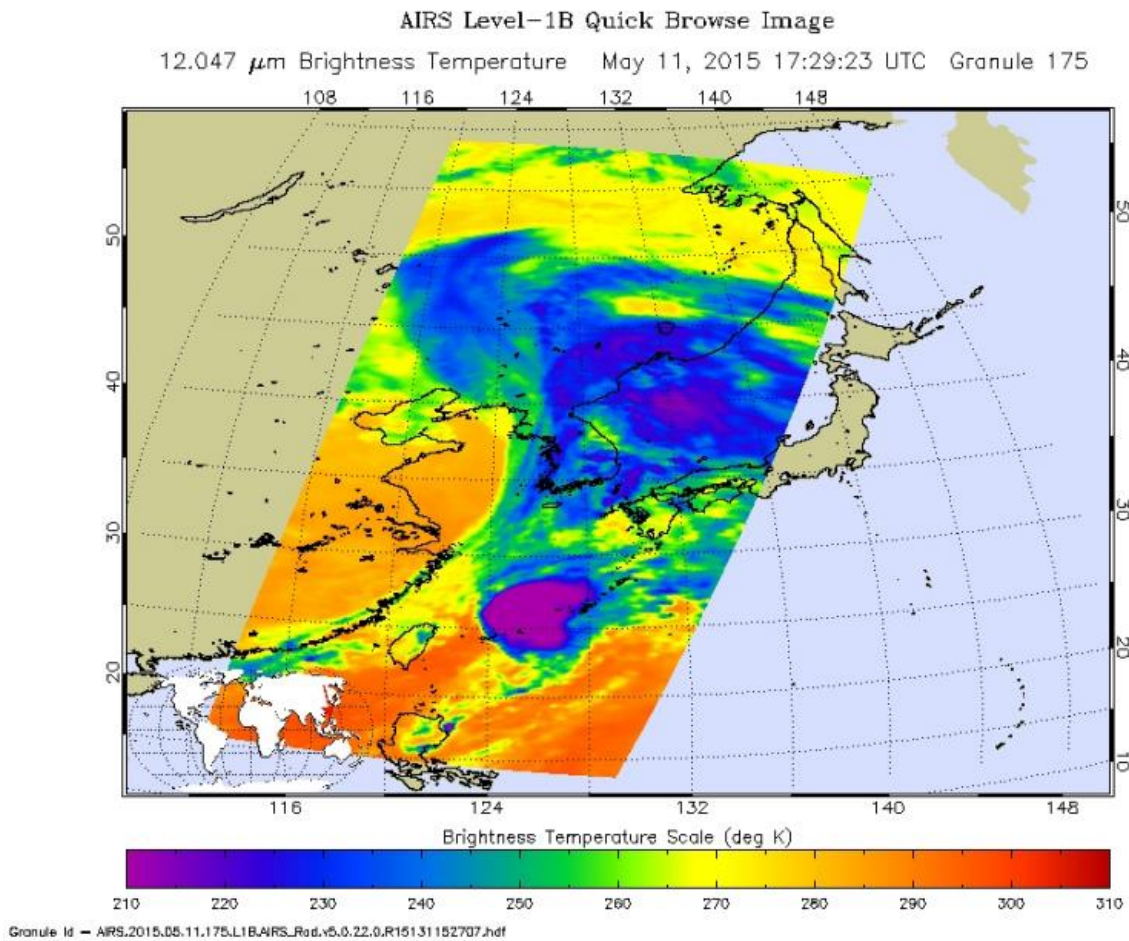


# Ex-Super Typhoon Noul's final warning issued by Joint Typhoon Warning Center

May 12 2015, by Lynn Jenner



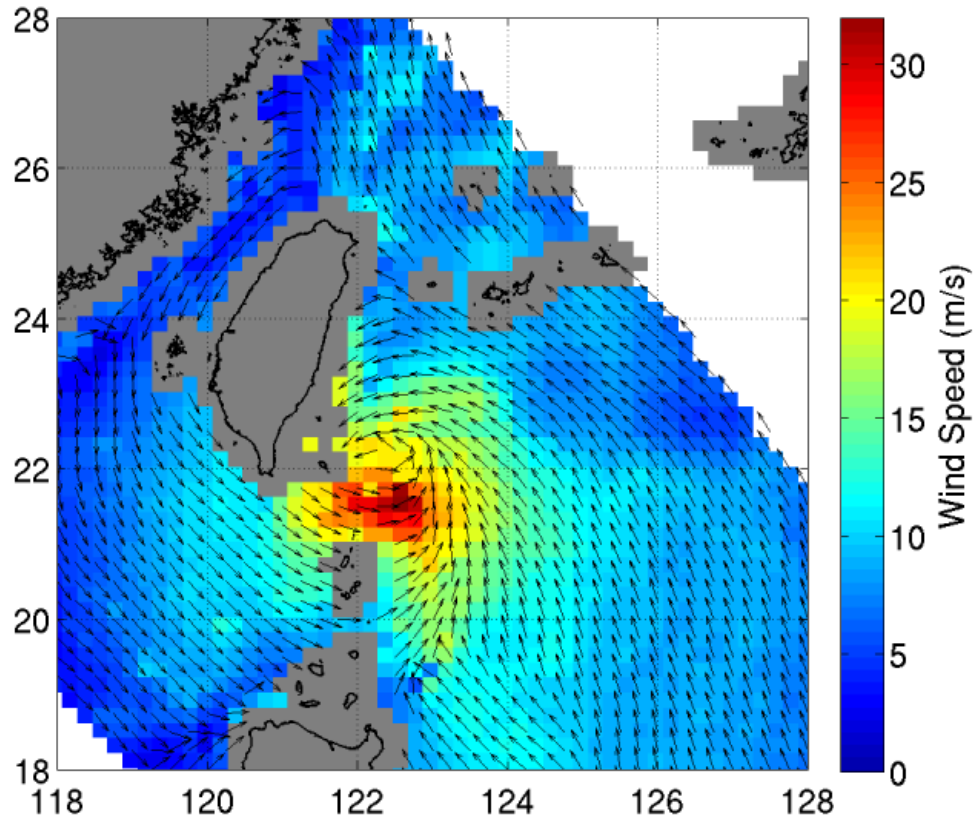
The AIRS instrument on Aqua captured this image of a weakening Noul on May 11, 2015. Credit: NASA JPL/Ed Olsen

Noul's outer bands lashed Luzon's eastern coast with strong winds and rain throughout Sunday afternoon (May 10) as it drew nearer, packing maximum sustained winds of about 260 kph (160 mph) and gusts as strong as 315 kph (195 mph). Over 3,800 persons evacuated the northeastern tip of the Philippines and two persons were killed by the storm, however the damage sustained by the islands was much less than anticipated.

By Monday, May 11, the storm had weakened as it started to change direction as seen in this AIRS image above. The storm is no longer as organized and is not sporting the distinctive eye. At that point Noul's [maximum sustained winds](#) were around 195 kph (120 mph), no longer super-typhoon strength.

The RapidScat image above shows a very small area of excessively high winds. Noul had already weakened when this image was captured by RapidScat on May 11. When it hit the Okinawa Islands six persons were injured and 13 houses were damaged by the [storm](#) even in its weakened state. It is expected to be near Tokyo Tuesday night with [strong winds](#) and heavy rain. Currently Noul is located 412 miles southwest of Yokosuka, Japan and is moving northeast at 51 knots. The Joint Typhoon Warning Center issued its last warning on Noul today. Unless Noul strengthens and redevelops, it should continue to weaken. Noul has completed extra-tropical transitioning as it speeds away to the east of Japan.

RapidScat Noul UTC 11-May-2015 04:16 to 11-May-2015 05:48



The RapidScat instrument image of Noul was taken May 11, 2015. Credit: NASA JPL, Doug Tyler

Provided by NASA's Goddard Space Flight Center

Citation: Ex-Super Typhoon Noul's final warning issued by Joint Typhoon Warning Center (2015, May 12) retrieved 15 May 2024 from <https://phys.org/news/2015-05-ex-super-typhoon-noul-issued-joint.html>

This document is subject to copyright. Apart from any fair dealing for the purpose of private

study or research, no part may be reproduced without the written permission. The content is provided for information purposes only.