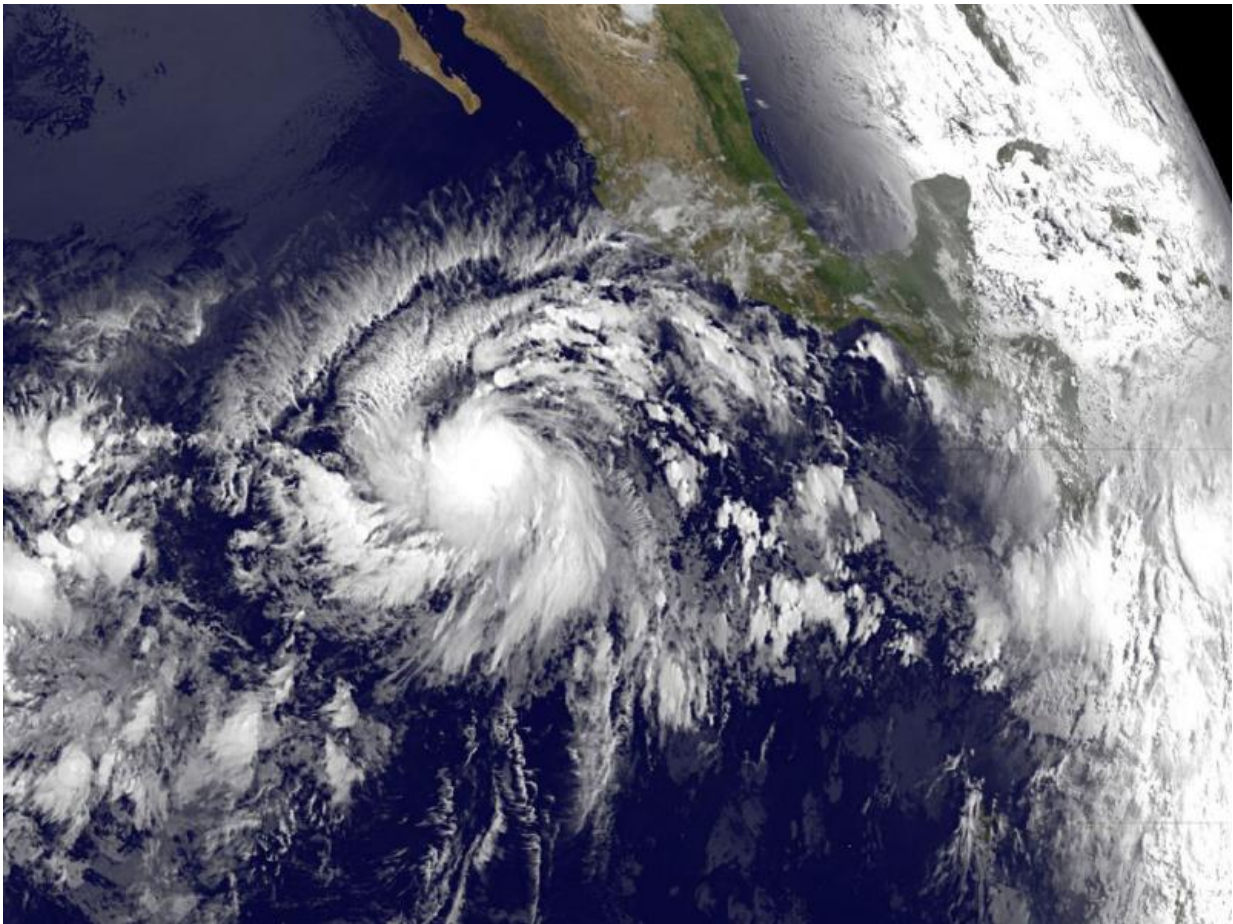


# First Eastern Pacific tropical depression runs ahead of dawn

May 28 2015, by Rob Gutro

---



NOAA's GOES-West satellite captured an infrared image of the developing depression on May 28 at 1200 UTC (8 a.m. EDT). The GOES image showed a circular center with bands of thunderstorms spiraling into the center from the northwest and southeast. Credit: NASA/NOAA GOES Project

The first tropical depression of the Eastern Pacific hurricane season formed during the early morning of Thursday, May 28, 2015, well southwest of Mexico. An image of the storm taken from NOAA's GOES-West satellite shows the depression in infrared light as it was born in the early morning hours before sunrise. To the east of the depression, the GOES image shows the sunlight of dawn reaching Mexico's Yucatan Peninsula.

At 0900 UTC (5 a.m. EDT) the center of Tropical Depression One-E was located near latitude 11.0 North, longitude 110.4 West, ABOUT 685 miles (1,105 km) southwest of Manzanillo Mexico. The depression is moving toward the west-northwest near 15 mph (24 km/h), but a decrease in forward speed is expected to begin later today.

Maximum sustained winds were near 35 mph (55 km/h) with higher gusts and it is expected to become a [tropical storm](#) later today, May 28 and could become a hurricane by late Friday. The estimated minimum central pressure is 1005 millibars (29.68 inches).

NOAA's GOES-West satellite captured an infrared image of the developing depression on May 28 at 1200 UTC (8 a.m. EDT). The GOES image showed a circular center with bands of thunderstorms spiraling into the center from the northwest and southeast.

The National Hurricane Center (NHC) forecast said that the depression should turn toward the northwest by tonight and the north-northwest by Friday night remaining over open ocean.

Provided by NASA's Goddard Space Flight Center

Citation: First Eastern Pacific tropical depression runs ahead of dawn (2015, May 28) retrieved 17 July 2024 from <https://phys.org/news/2015-05-eastern-pacific-tropical-depression-dawn.html>

This document is subject to copyright. Apart from any fair dealing for the purpose of private study or research, no part may be reproduced without the written permission. The content is provided for information purposes only.