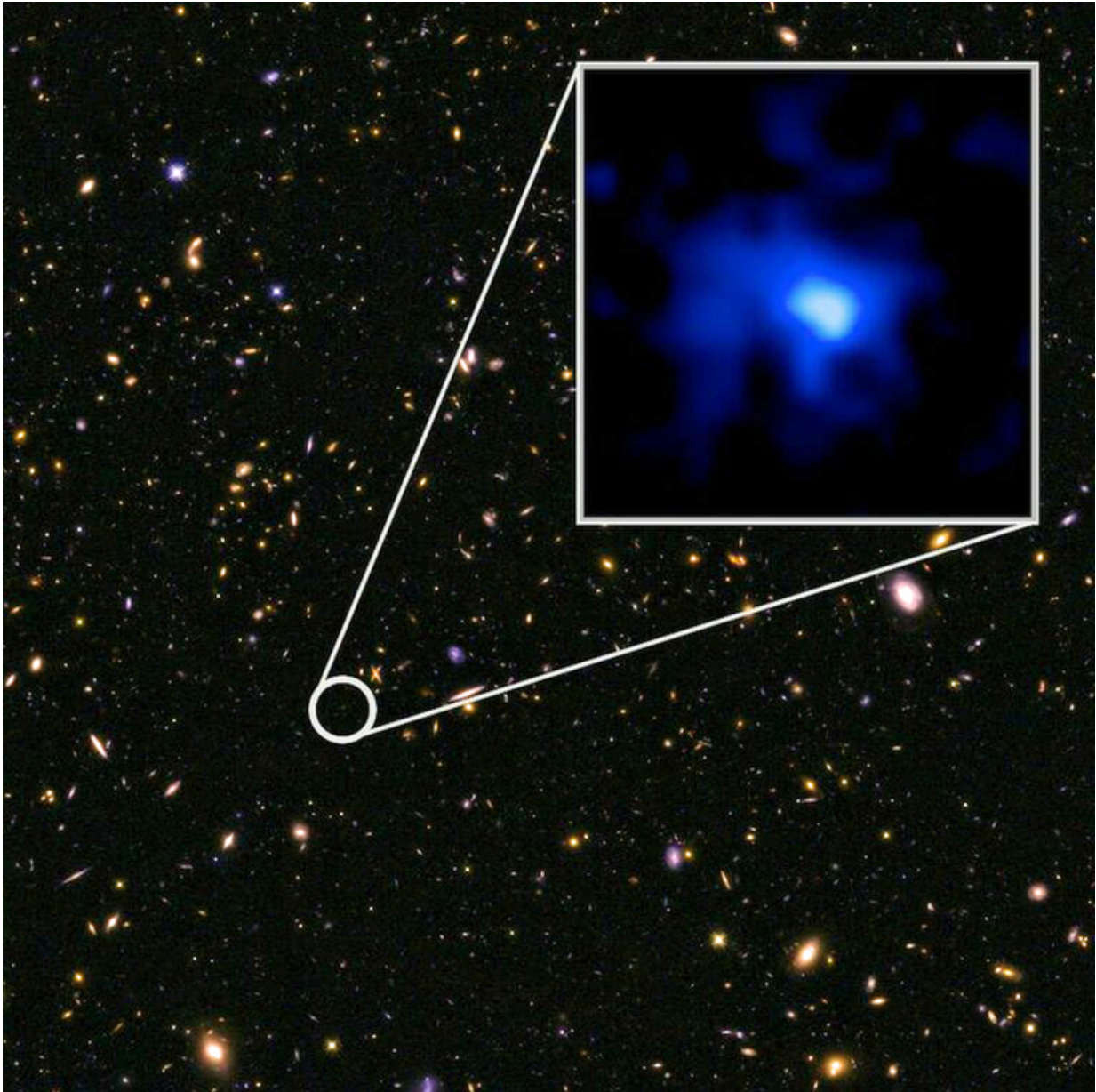


Astronomers unveil the farthest galaxy

May 5 2015



The galaxy EGS-zs8-1 sets a new distance record. It was discovered in images

from the Hubble Space Telescope's CANDELS survey. Credit: NASA, ESA, P. Oesch and I. Momcheva (Yale University), and the 3D-HST and HUDF09/XDF teams

An international team of astronomers led by Yale University and the University of California-Santa Cruz have pushed back the cosmic frontier of galaxy exploration to a time when the universe was only 5% of its present age.

The team discovered an exceptionally luminous galaxy more than 13 billion years in the past and determined its exact distance from Earth using the powerful MOSFIRE instrument on the W.M. Keck Observatory's 10-meter telescope, in Hawaii. It is the most distant galaxy currently measured.

The galaxy, EGS-zs8-1, was originally identified based on its particular colors in images from NASA's Hubble and Spitzer space telescopes. It is one of the brightest and most massive objects in the early universe.

Age and distance are vitally connected in any discussion of the universe. The light we see from our Sun takes just eight minutes to reach us, while the light from distant [galaxies](#) we see via today's advanced telescopes travels for billions of years before it reaches us—so we're seeing what those galaxies looked like billions of years ago.

"It has already built more than 15% of the mass of our own Milky Way today," said Pascal Oesch, a Yale astronomer and lead author of a study published online May 5 in *Astrophysical Journal Letters*. "But it had only 670 million years to do so. The universe was still very young then." The new distance measurement also enabled the astronomers to determine that EGS-zs8-1 is still forming stars rapidly, about 80 times faster than

our galaxy.

Only a handful of galaxies currently have accurate distances measured in this very early universe. "Every confirmation adds another piece to the puzzle of how the first generations of galaxies formed in the early universe," said Pieter van Dokkum, the Sol Goldman Family Professor of Astronomy and chair of Yale's Department of Astronomy, who is second author of the study. "Only the largest telescopes are powerful enough to reach to these large distances."

The MOSFIRE instrument allows astronomers to efficiently study several galaxies at the same time. Measuring galaxies at extreme distances and characterizing their properties will be a major goal of astronomy over the next decade, the researchers said.

The new observations establish EGS-zs8-1 at a [time](#) when the universe was undergoing an important change: The hydrogen between galaxies was transitioning from a neutral state to an ionized state. "It appears that the young stars in the early galaxies like EGS-zs8-1 were the main drivers for this transition, called reionization," said Rychard Bouwens of the Leiden Observatory, co-author of the study.

Taken together, the new Keck Observatory, Hubble, and Spitzer observations also pose new questions. They confirm that massive galaxies already existed early in the history of the [universe](#), but they also show that those galaxies had very different physical properties from what is seen around us today. Astronomers now have strong evidence that the peculiar colors of early galaxies—seen in the Spitzer images—originate from a rapid formation of massive, young stars, which interacted with the primordial gas in these galaxies.

The observations underscore the exciting discoveries that are possible when NASA's James Webb Space Telescope is launched in 2018, note

the researchers. In addition to pushing the cosmic frontier to even earlier times, the telescope will be able to dissect the galaxy light of EGS-zs8-1 seen with the Spitzer telescope and provide [astronomers](#) with more detailed insights into its gas properties.

"Our current observations indicate that it will be very easy to measure accurate distances to these distant galaxies in the future with the James Webb Space Telescope," said co-author Garth Illingworth of the University of California-Santa Cruz. "The result of JWST's upcoming measurements will provide a much more complete picture of the formation of galaxies at the cosmic dawn."

Provided by Yale University

Citation: Astronomers unveil the farthest galaxy (2015, May 5) retrieved 8 February 2023 from <https://phys.org/news/2015-05-astronomers-unveil-farthest-galaxy.html>

This document is subject to copyright. Apart from any fair dealing for the purpose of private study or research, no part may be reproduced without the written permission. The content is provided for information purposes only.