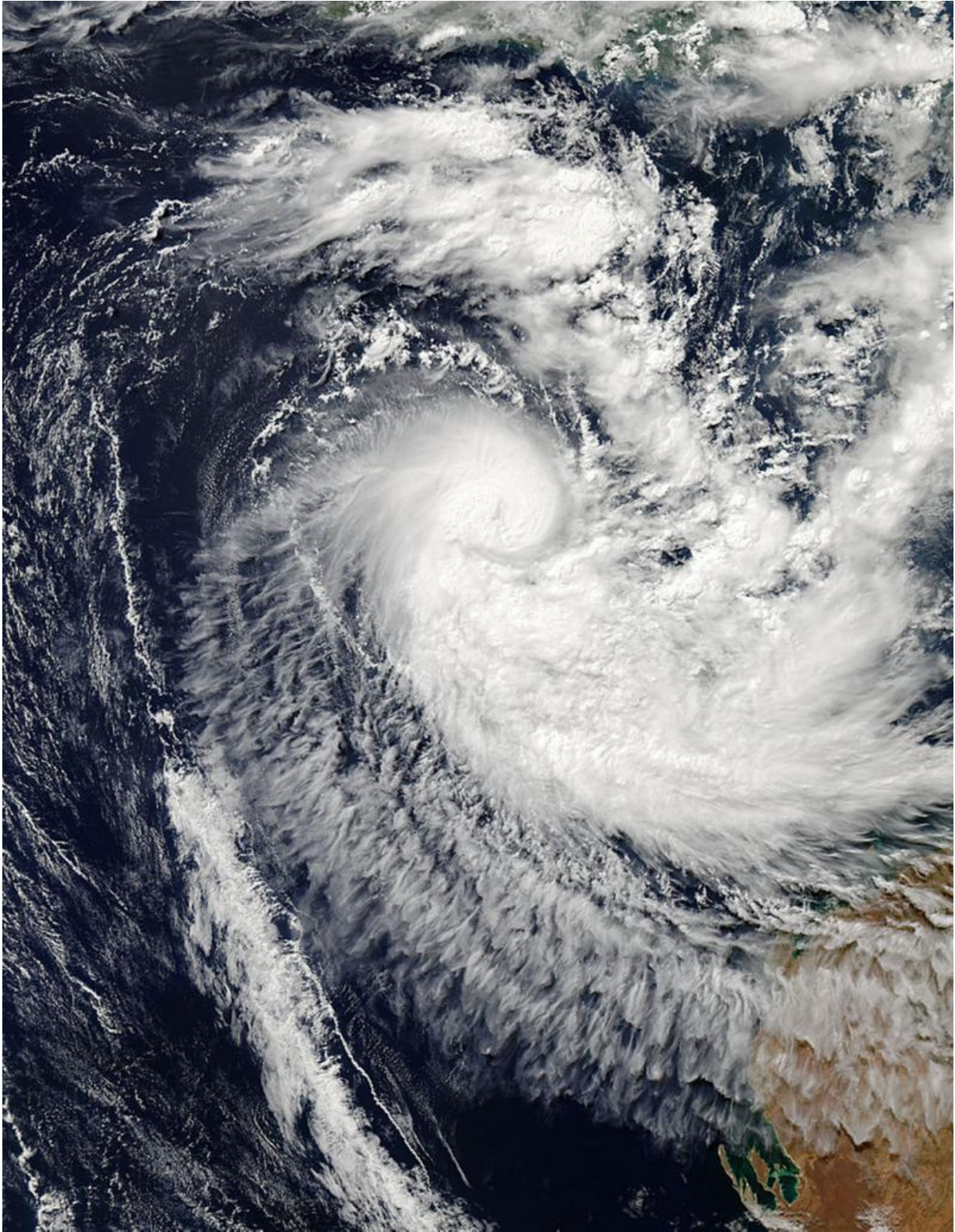


Two NASA views of newborn Tropical Cyclone Quang

April 29 2015, by Rob Gutro



On April 29 at 06:35 UTC (2:35 a.m. EDT), the MODIS instrument aboard

NASA's Aqua satellite captured this visible image of Tropical Cyclone Quang in the Southern Indian Ocean. Credit: NASA Goddard MODIS Rapid Response Team

The tropical low pressure area formerly known as System 98S has organized and developed into Tropical Cyclone Quang in the Southern Indian Ocean. NASA's Aqua satellite passed over Quang and gathered visible and infrared data showing that the storm came together quickly.

On April 29, when Aqua passed over Quang, the Moderate Resolution Imaging Spectroradiometer (MODIS) instrument data provided a visible picture of Quang that showed a concentration of strong thunderstorms around the center of circulation and a band of thunderstorms winding into the center from the south.

The Atmospheric Infrared Sounder (AIRS) instrument aboard Aqua looked at the storm through infrared light and measured cloud top temperatures. AIRS saw cloud top temperatures as cold as 210 kelvin/-63.1F/-81.6C in powerful [thunderstorms](#) circling Quang's center. NASA research shows in storms with that cloud tops that cold (and high into the troposphere) have the potential to drop heavy rain.

The Australian Bureau of Meteorology forecast calls for Quang to move southeast over the next couple of days. Quang's center is forecast to approach Coral Bay around 8 p.m. local time on Saturday, May 2. Currently, there are no warnings in effect because the storm is not yet close to land.

On April 29 at 8 a.m. EDT/U.S. (8:00 p.m. WST local time Western Australia), Quang's center was near 15.9 south latitude and 109.1 east longitude, about 528 miles (850 km) northwest of the town of Exmouth.

Exmouth is located on the tip of the North West Cape in Western Australia and is about 789 miles (1,270 kilometers) north of the state capital Perth.

Quang was moving south-southwest at 5 mph (8 kph). The Australian Bureau of Meteorology (ABM) expects Quang to shift in track to the southeast on April 30. The cyclone is also expected to weaken as it moves closer to the far northwest of the state on Friday.

The Joint Typhoon Warning Center noted that as Quang approaches land, [vertical wind shear](#) will increase and sea surface temperatures will drop - two factors that will weaken the storm.

For updated ABM bulletins on Cyclone Quang, visit:
<http://www.bom.gov.au/cyclone/index.shtml>.

Provided by NASA's Goddard Space Flight Center

Citation: Two NASA views of newborn Tropical Cyclone Quang (2015, April 29) retrieved 6 May 2024 from <https://phys.org/news/2015-04-nasa-views-newborn-tropical-cyclone.html>

<p>This document is subject to copyright. Apart from any fair dealing for the purpose of private study or research, no part may be reproduced without the written permission. The content is provided for information purposes only.</p>
--