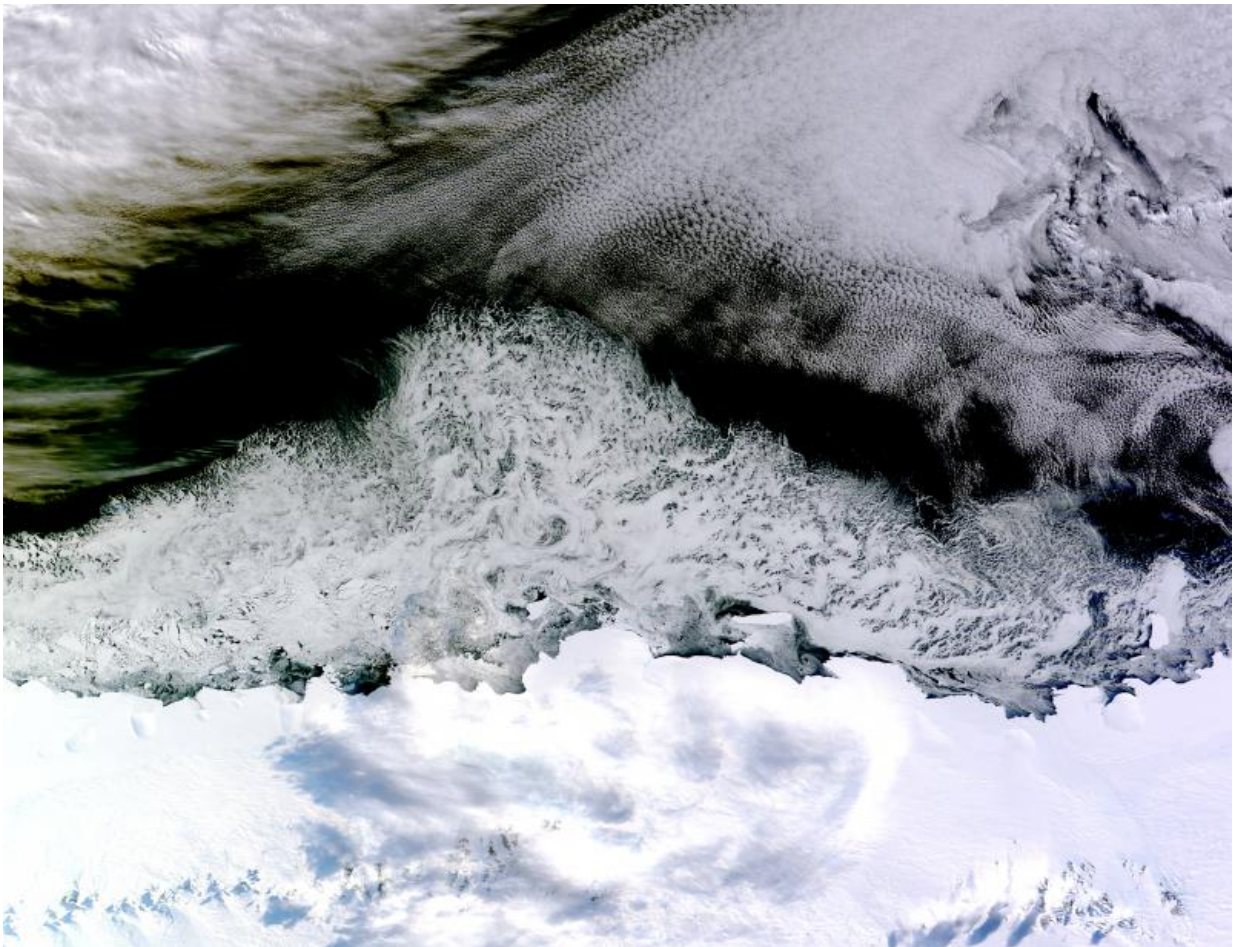


# Image: Sea ice off Antarctica's Princess Astrid Coast

April 9 2015, by Kathryn Hansen

---



Credit: NASA/Jeff Schmaltz, LANCE/EOSDIS Rapid Response

On April 5, 2015, the Moderate Resolution Imaging Spectroradiometer

(MODIS) on NASA's Terra satellite acquired this natural-color image of sea ice off the coast of East Antarctica's Princess Astrid Coast.

White areas close to the continent are [sea ice](#), while white areas in the northeast corner of the image are clouds. One way to better distinguish ice from clouds is with false-color imagery. In the false-color view of the scene here, ice is blue and clouds are white.

The image was acquired after Antarctic sea ice had passed its annual minimum extent (reached on Feb. 20, 2015), and had resumed expansion toward its maximum extent (usually reached in September).

Provided by NASA

Citation: Image: Sea ice off Antarctica's Princess Astrid Coast (2015, April 9) retrieved 19 April 2024 from <https://phys.org/news/2015-04-image-sea-ice-antarctica-princess.html>

This document is subject to copyright. Apart from any fair dealing for the purpose of private study or research, no part may be reproduced without the written permission. The content is provided for information purposes only.