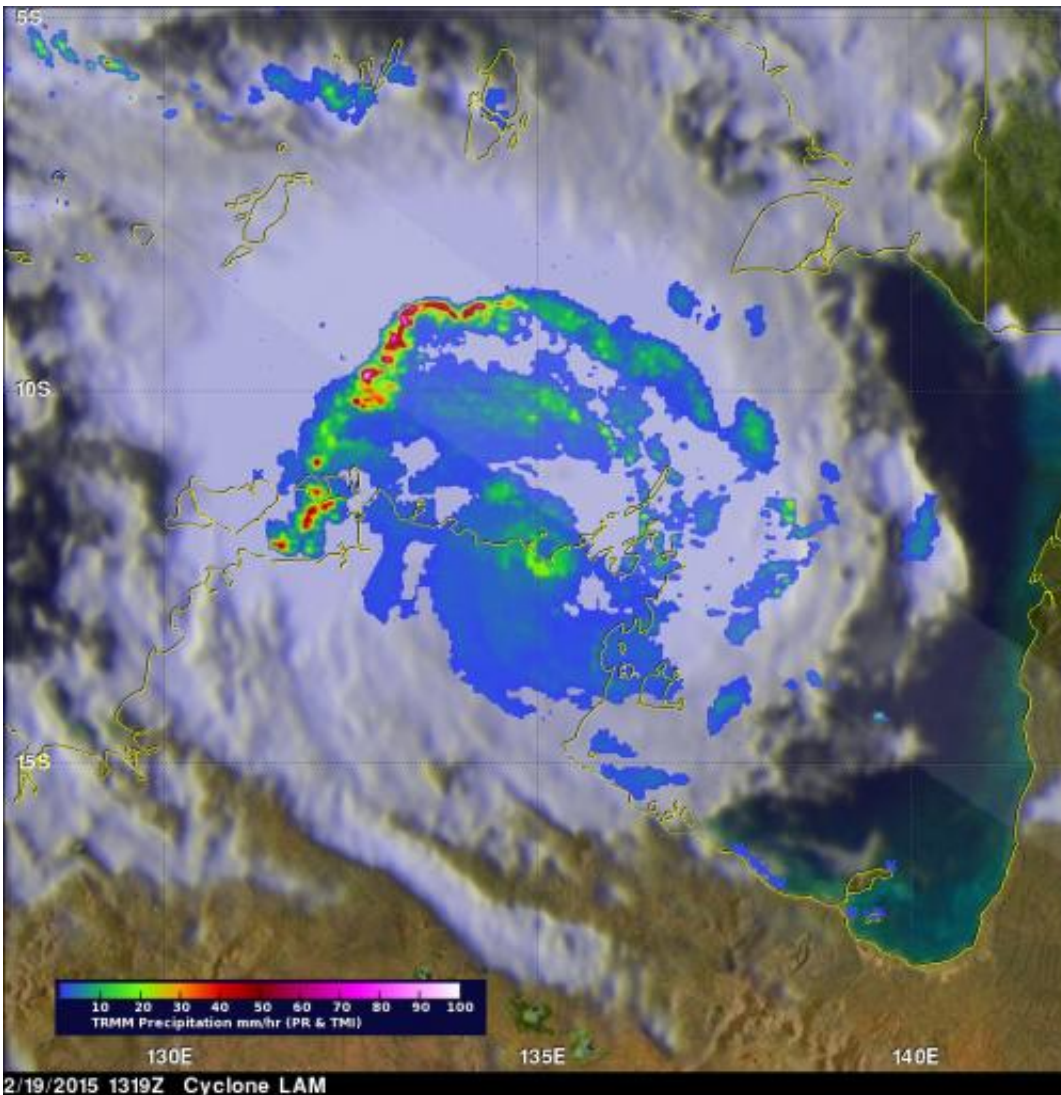


# NASA sees heavy rain in Tropical Cyclone Lam

February 20 2015, by Rob Gutro



The TRMM satellite saw rainfall in Lam was occurring at 123 mm (4.8 inches) per hour in an intense band of storms over the Timor Sea northwest of the eye. Some thunderstorms topped over 16.7 km (10.4 miles). Credit: NASA/JAXA,

Hal Pierce

Tropical Cyclone Lam made landfall in a remote area of the Northern Territory and the Tropical Rainfall Measuring Mission or TRMM satellite revealed that it brought heavy rain with it.

Tropical Cyclone Lam made landfall as a Category Four storm, according to the Australian Bureau of Meteorology (ABM). It came ashore near Elcho and Goulburn Island, east of Darwin.

TRMM passed over Lam on Feb. 19 at 13:19 UTC (8:19 a.m. EST). TRMM's Precipitation Radar (PR) had just been temporarily returned to service when it passed over Lam. The PR instrument found rain falling at an estimated rate of over 123 mm (4.8 inches) per hour in an intense band of storms over the Timor Sea northwest of LAM's eye. Some thunderstorm tops in that area were found reaching heights of over 16.7 km (10.4 miles).

As of Feb. 20, the ABM cancelled the cyclone warning for inland parts of the central Arnhem District. At 4:00 p.m. CST Darwin local time, Lam's sustained winds were near 55 kph.

Lam was centered near 14.1 degrees south and 133.8 degrees east, about 75 km southwest of Bulman, Northern Territory. Lam was speeding to the south-southwest at 21 kph.

ABM noted "Squally thunderstorms are likely to continue over the Top End. Heavy rain is expected to cause flooding of low-lying areas and cause river rises over the central Top End. A Flood Watch for the Arnhem and Carpentaria Coastal Rivers has been issued." For further updates on local conditions visit the ABM website:

<http://www.bom.gov.au/>.

The TRMM satellite is managed by both NASA and the Japan Aerospace Exploration Agency.

Provided by NASA's Goddard Space Flight Center

Citation: NASA sees heavy rain in Tropical Cyclone Lam (2015, February 20) retrieved 20 April 2024 from <https://phys.org/news/2015-02-nasa-heavy-tropical-cyclone-lam.html>

This document is subject to copyright. Apart from any fair dealing for the purpose of private study or research, no part may be reproduced without the written permission. The content is provided for information purposes only.