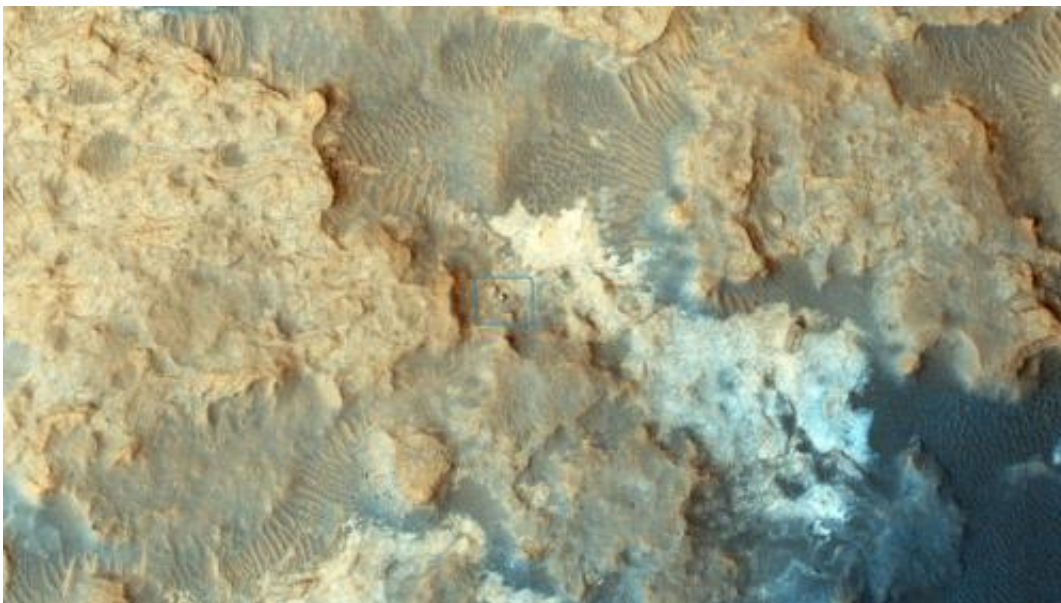


Image: Curiosity trek through 'Pahrump Hills' spotted by Mars Reconnaissance Orbiter

February 5 2015



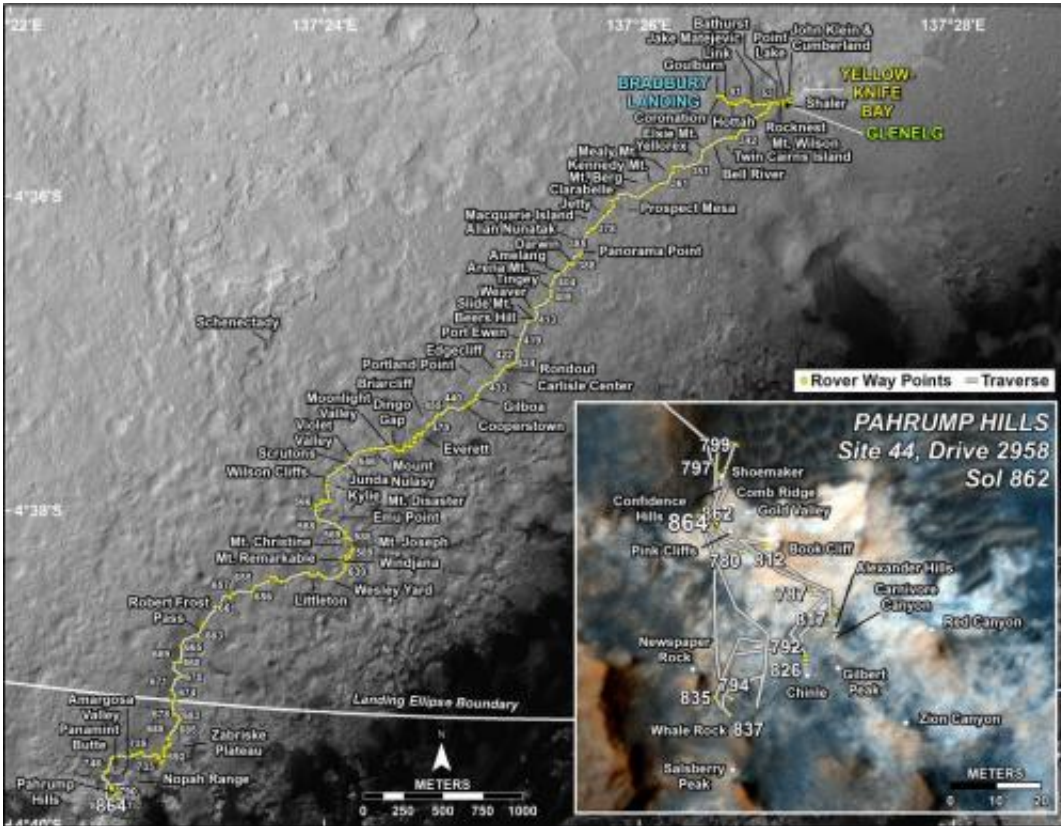
Credit: NASA/JPL-Caltech/Univ. of Arizona

NASA's Curiosity Mars rover can be seen at the "Pahrump Hills" area of Gale Crater in this view from the High Resolution Imaging Science Experiment (HiRISE) camera on NASA's Mars Reconnaissance Orbiter. Pahrump Hills is an outcrop at the base of Mount Sharp. The region contains sedimentary rocks that scientists believe formed in the presence of water.

The location of the rover, with its shadow extending toward the upper right, is indicated with an inscribed rectangle. Figure A is an unannotated version of the image. North is toward the top. The view covers an area about 360 yards (330 meters) across.

HiRISE made the observation on Dec. 13, 2014. At that time, Curiosity was near a feature called "Whale Rock." A map showing the rover's path for the weeks leading up to that date is at [mars.jpl.nasa.gov/msl/multimed ... images/?ImageID=6884](http://mars.jpl.nasa.gov/msl/multimed...images/?ImageID=6884) . The inset map at [mars.jpl.nasa.gov/msl/multimed ... images/?ImageID=6913](http://mars.jpl.nasa.gov/msl/multimed...images/?ImageID=6913) labels the location of Whale Rock and other features in the Pahrump Hills area.

The bright features in the landscape are [sedimentary rock](#) and the dark areas are sand. The HiRISE team plans to periodically image Curiosity, as well as NASA's other active Mars rover, Opportunity, as the vehicles continue to explore Mars.



This map shows the route driven by NASA's Mars rover Curiosity through the 864 Martian day, or sol, of the rover's mission on Mars (January, 11, 2015). Numbering of the dots along the line indicate the sol number of each drive. North is up. The scale bar is 1 kilometer (~0.62 mile). From Sol 862 to Sol 864, Curiosity had driven a straight line distance of about 13.88 feet (4.23 meters). The base image from the map is from the High Resolution Imaging Science Experiment Camera (HiRISE) in NASA's Mars Reconnaissance Orbiter. Credit: NASA/JPL-Caltech/Univ. of Arizona

Provided by NASA

Citation: Image: Curiosity trek through 'Pahrump Hills' spotted by Mars Reconnaissance Orbiter (2015, February 5) retrieved 20 March 2024 from <https://phys.org/news/2015-02-image->

curiosity-trek-pahrump-hills.html

This document is subject to copyright. Apart from any fair dealing for the purpose of private study or research, no part may be reproduced without the written permission. The content is provided for information purposes only.