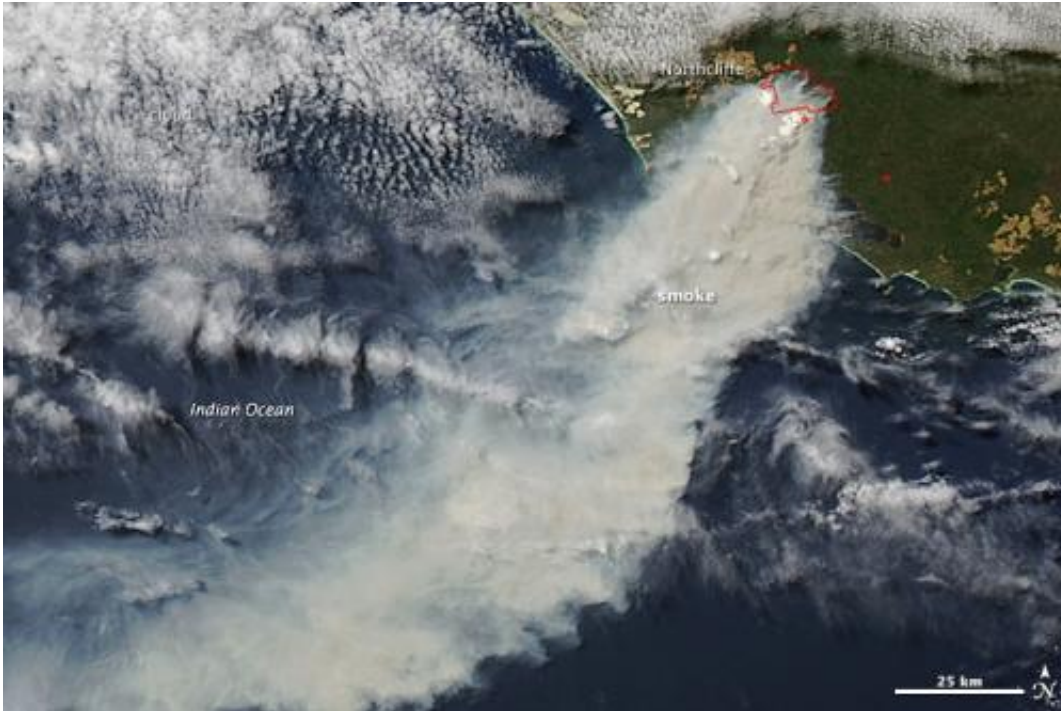


# Image: Bushfire in Southwestern Australia

February 2 2015

---



On Feb. 1, 2015, the Moderate Resolution Imaging Spectroradiometer (MODIS) on NASA's Aqua satellite acquired this image of a large bushfire burning near the town of Northcliffe in Western Australia. Red outlines indicate hot spots where MODIS detected unusually warm surface temperatures associated with fire. As of February 2, the fire had charred 20,000 hectares (70 square miles). According to media reports, local fire authorities considered Northcliffe "undefendable" and have urged residents to evacuate. Credit: Jeff Schmaltz, LANCE/EOSDIS Rapid Response.

On February 1, 2015, the Moderate Resolution Imaging Spectroradiometer (MODIS) on NASA's Aqua satellite acquired this

image of a large bushfire burning near the town of Northcliffe in Western Australia.

Red outlines indicate [hot spots](#) where MODIS detected unusually warm surface temperatures associated with fire.

As of February 2, the fire had charred 20,000 hectares (70 square miles).

According to media reports, local fire authorities considered Northcliffe "undefendable" and have urged residents to evacuate.

Provided by NASA's Goddard Space Flight Center

Citation: Image: Bushfire in Southwestern Australia (2015, February 2) retrieved 22 March 2023 from <https://phys.org/news/2015-02-image-bushfire-southwestern-australia.html>

This document is subject to copyright. Apart from any fair dealing for the purpose of private study or research, no part may be reproduced without the written permission. The content is provided for information purposes only.