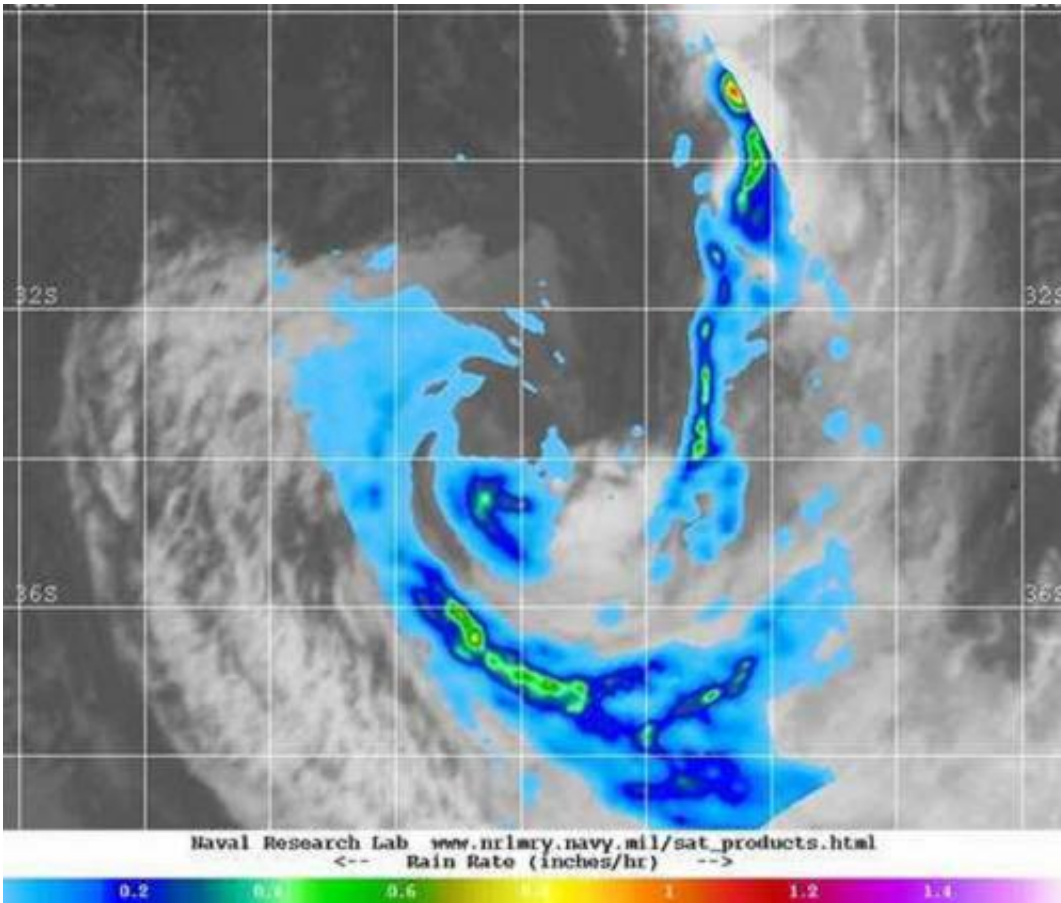


GPM satellite catches Fundi's fadeout

February 9 2015, by Rob Gutro



NASA-JAXA's GPM satellite passed over Tropical Storm Fundi on Feb. 8 at 5 p.m. EST that showed a fragmented band of thunderstorms east and south of the center. Yellow areas indicate rainfall at 1 inch per hour. Cloud data is from Europe's METEO-7 satellite. Credit: NASA/JAXA/NRL/ESA

The final warning was issued on Tropical cyclone Fundi on Sunday, Feb 8 as NASA-JAXA's GPM satellite captured its waning rainfall.

NASA-JAXA's Global Precipitation Measurement (GPM) core satellite captured an image of rainfall associated with Tropical Storm Fundi on Feb. 8 at 22:00 UTC (5 p.m. EST) that showed a fragmented band of thunderstorms east and south of the center. There were some areas within those broken bands where GPM measured [rainfall](#) occurring at 1 inch (25 mm) per hour.

The Joint Typhoon Warning Center issued their fifth and final warning on Fundi on Feb. 8 at 2100 UTC (4 p.m. EST). At that time, Fundi was centered near 32.8 south and 44.2 east, about 840 nautical miles (966 miles/ 1,556 km) south of Antananarivo, Madagascar and moving south at a speedy 25 knots (28.7mph/46.3 kph). Fundi's maximum sustained winds near 35 knots (40 mpg/62 kph).

Fundi was in an extremely hostile environment where Vertical wind shear was strong, blowing as fast as 40 knots (46 mph/74 kph). The other factor that helped weaken the storm quickly is that Fundi had moved over cool waters near 25 C (77 F) and a tropical cyclone needs 26.6 C (80 F) to survive. Fundi dissipated by February 9 as it moved further south.

Provided by NASA's Goddard Space Flight Center

Citation: GPM satellite catches Fundi's fadeout (2015, February 9) retrieved 1 May 2024 from <https://phys.org/news/2015-02-gpm-satellite-fundi-fadeout.html>

<p>This document is subject to copyright. Apart from any fair dealing for the purpose of private study or research, no part may be reproduced without the written permission. The content is provided for information purposes only.</p>
--