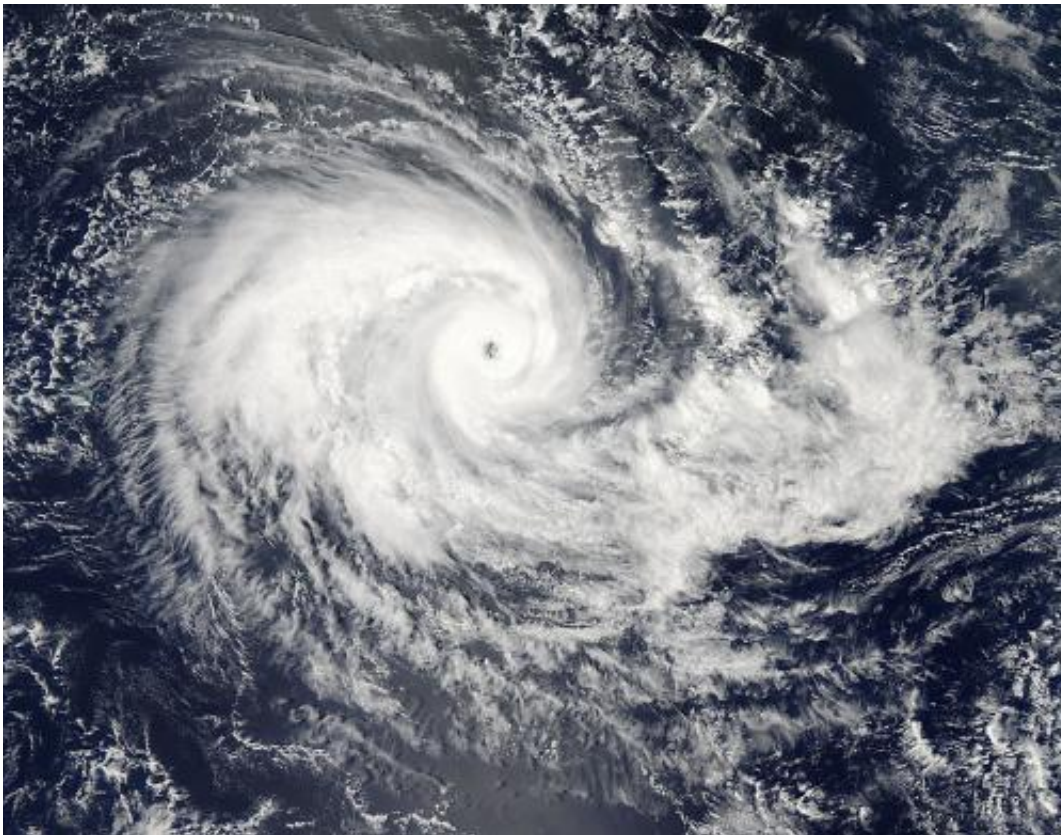


Tropical Cyclone Eunice still churning in the Southern Indian Ocean

January 29 2015



On Jan. 29, 2015, the Aqua satellite captured this image of Eunice located south of Diego Garcia and the Cocos Islands. Credit: NASA's Goddard MODIS Rapid Response Team

The MODIS instrument that flies aboard NASA's Aqua satellite captured this image of Tropical Cyclone Eunice in the South Indian

Ocean, well south of Diego Garcia and the Cocos Islands. Its location is 637 nautical miles south-southwest of these islands. The storm is currently tracking south-southeastward at 10 knots.

Eunice's microwave eye is well-defined in this image and the banding around its center is tightly wrapped. The eye is 5 nautical miles across. The intensity of the storm has increased to 115 knots. The storm is encountering favorable conditions for its continued intensity and is tracking south-southeastward and is expected to continue this past for the next 24 hours.

At that point it is expected that the storm will shift east-southeastward due on the Ninetyeast Ridge underwater seamount chain which becomes more west-to-east oriented. Favorable continuing conditions will likely allow the storm to increase to a peak intensity of 140 knots. Current maximum sea wave height is 30 feet. After peak intensity the [storm](#) will slowly dissipate.

Eunice is not threatening any land masses at this time.

Provided by NASA's Goddard Space Flight Center

Citation: Tropical Cyclone Eunice still churning in the Southern Indian Ocean (2015, January 29) retrieved 24 April 2024 from <https://phys.org/news/2015-01-tropical-cyclone-eunice-churning-southern.html>

This document is subject to copyright. Apart from any fair dealing for the purpose of private study or research, no part may be reproduced without the written permission. The content is provided for information purposes only.