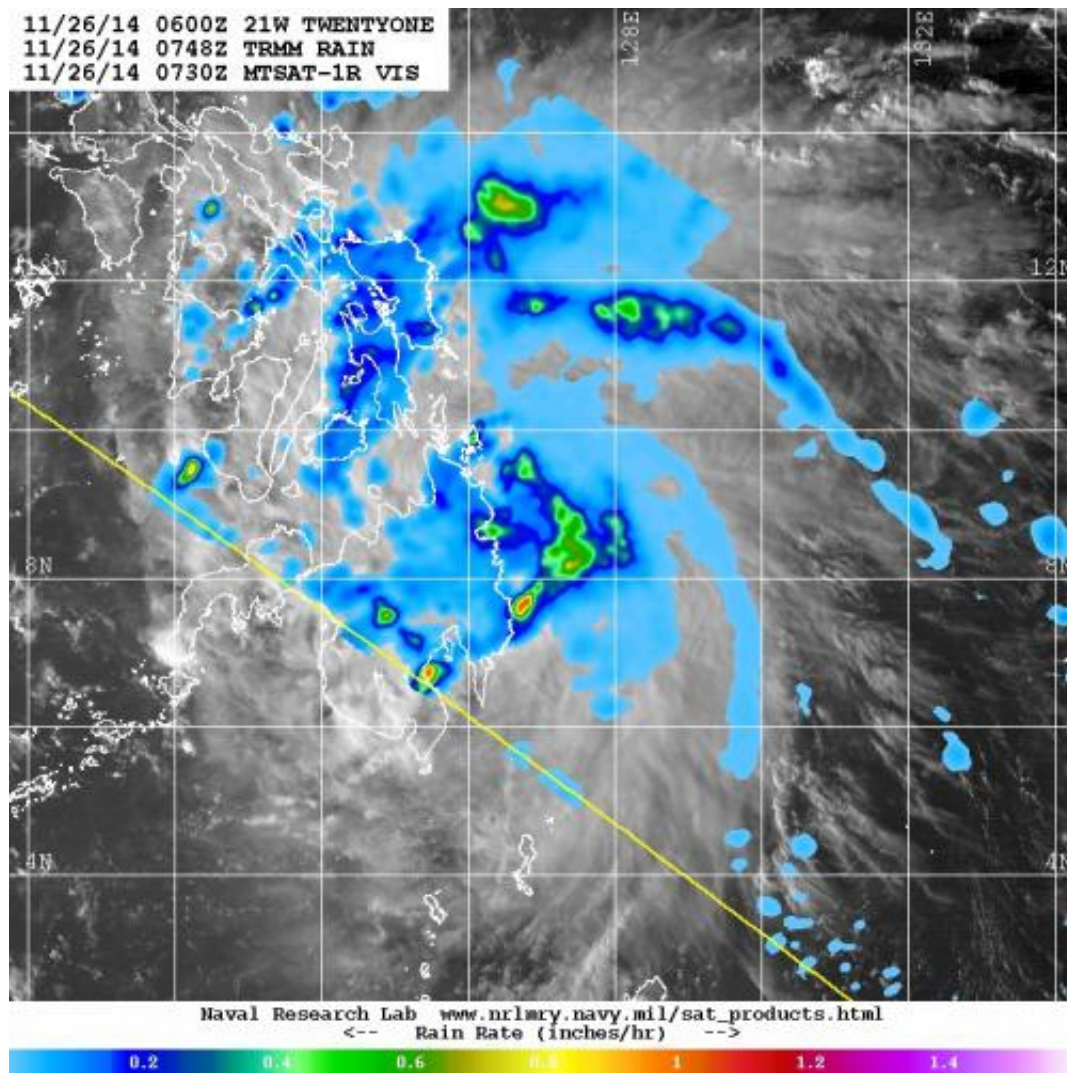


Tropical depression 21W forms, Philippines under warnings

November 26 2014, by Rob Gutro



On Nov. 26, the TRMM satellite revealed areas of heavy rainfall in fragmented bands east of the center of circulation, where rain was falling at more than 1 inch (25 mm) per hour (red). Japan's MTSAT-1 satellite provided cloud data. Credit: NASA/NRL

The Tropical Rainfall Measuring Mission or TRMM satellite provided rainfall data as Tropical Depression 21W was making landfall in the southern Philippines on Nov. 26.

TRMM revealed areas of [heavy rainfall](#) in fragmented bands east of the center of circulation, where rain was falling at more than 1 inch (25 mm) per hour. TRMM [rainfall data](#) was overlaid on infrared data from the Japan Meteorological Agency's MTSAT-1 satellite that showed Tropical Depression 21W's (TD21W) clouds extended from western Mindanao, east into the Philippine Sea.

On Nov. 26, there were a number of warnings in effect for the Philippines. Public storm warning signal #1 was in effect for the province of Luzon that includes: Palawan and the Calamian Group of Islands. In Visayas: Southern Leyte, Bohol, Southern Cebu Including Cebu City, Negros Oriental, Southern Negros Occidental and Siquijor. In the province of Mindanao:

Surigao del Norte including Siargao Island, Surigao del Sur, Agusan del Norte & Sur, Dinagat Province, Camiguin, Misamis Oriental & Occidental, Bukidnon and Zamboanga del Norte.

At 1500 UTC (10 a.m. EST), TD21W was centered near 8.7 north longitude and 125.4 east latitude. That's about 468 nautical miles (538.6 miles/866.7 kph) southeast of Manila, Philippines. Maximum sustained winds were near 30 knots (34.5 mph/55.5 kph). TD21W is moving to the west at 9 knots (10.3 mph/16.6 kph).

TD 21W is forecast to continue tracking westward along the southern edge of a sub-tropical ridge of high pressure which is located to the north of the depression and oriented east-west. The Joint Typhoon

Warning Center forecasts TD21W to move over northern Mindanao late on Nov. 26 and weaken. By Nov. 27, TD21W is expected to emerge into the Sulu Sea where it is expected to strengthen.

Provided by NASA's Goddard Space Flight Center

Citation: Tropical depression 21W forms, Philippines under warnings (2014, November 26)
retrieved 25 April 2024 from

<https://phys.org/news/2014-11-tropical-depression-21w-philippines.html>

This document is subject to copyright. Apart from any fair dealing for the purpose of private study or research, no part may be reproduced without the written permission. The content is provided for information purposes only.