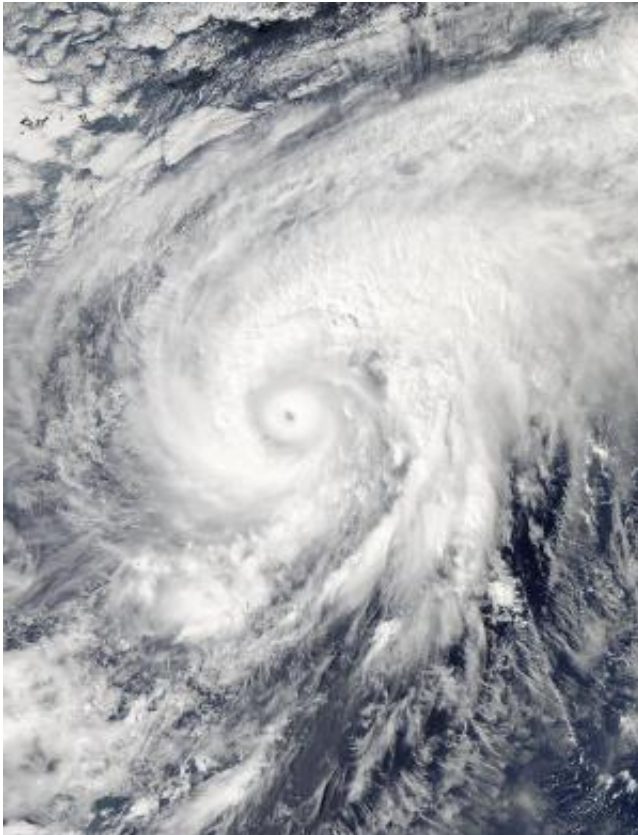


NASA sees Super Typhoon Nuri's eye open in two days

November 3 2014, by Rob Gutro



On Nov. 3 at 04:20 UTC (12:20 a.m. EDT) NASA's Aqua satellite captured this image of Super Typhoon Nuri after it developed an eye. Credit: NASA Goddard MODIS Rapid Response Team

Over the course of two days, from Nov. 1 to Nov. 3, NASA's Aqua satellite watched from space as Tropical cyclone Nuri strengthened into

a Super Typhoon and "opened" or developed an eye.

On Nov. 1, when the Moderate Resolution Imaging Spectroradiometer or MODIS instrument aboard NASA's Aqua satellite captured a [visible image](#) of Super Typhoon Nuri at 04:30 UTC (12:30 a.m. EDT) and it had not yet developed an eye. On Nov. 3 at 04:20 UTC (12:20 a.m. EDT) MODIS on Aqua passed over Super Typhoon Nuri again after it developed an eye. By Nov. 3 the bands of thunderstorms spiraling into the center of the low-level circulation had become more tightly wrapped. The image also showed that the widest band of thunderstorms were over the northern and eastern quadrants of the storm.

At 1500 UTC (10 a.m. EST) on Nov. 3, Nuri's maximum sustained winds had reached 155 knots (178.4 mph/ 287.1 kph), making it a Category 5 hurricane on the Saffir-Simpson wind scale. Some minor intensification is expected before the storm begins to weaken on Nov. 4.

Nuri was centered near 20.2 north latitude and 133.9 east longitude, about 514 nautical miles (591.5 miles/ 951.9 km) southeast of Kadena Air Base, Okinawa, Japan. It was moving to the northeast at 10 knots (11.5 mph/18.5 kph). Nuri is expected to pass west of Iwo To on Nov. 5 as it continues moving in a northeasterly direction. For current weather conditions in Iwo To (also known as Iwojima), visit: <http://weather.noaa.gov/weather/current/RJAW.html>.

Nuri is expected to intensify further before weakening. Adverse conditions will cause the storm to go on a weakening trend and the storm is expected to become extra-tropical after three or four days.



On Nov. 1, when NASA's Aqua satellite captured this image of Super Typhoon Nuri at 04:30 UTC (12:30 a.m. EDT) it had not yet developed an eye. Credit: NASA Goddard MODIS Rapid Response Team

Provided by NASA's Goddard Space Flight Center

Citation: NASA sees Super Typhoon Nuri's eye open in two days (2014, November 3) retrieved 9 April 2024 from <https://phys.org/news/2014-11-nasa-super-typhoon-nuri-eye.html>

This document is subject to copyright. Apart from any fair dealing for the purpose of private study or research, no part may be reproduced without the written permission. The content is provided for information purposes only.