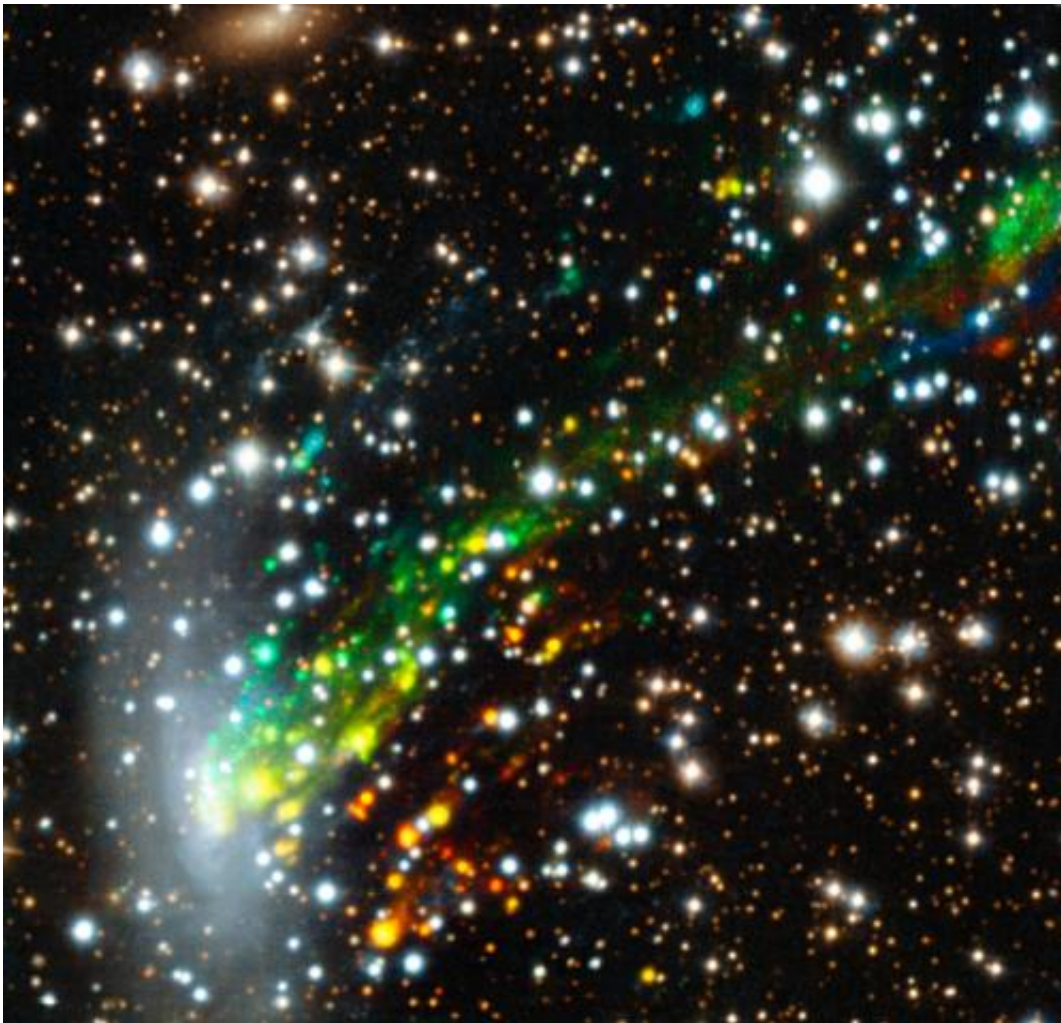


# MUSE reveals true story behind galactic crash

November 9 2014, by Tomasz Nowakowski

---



The MUSE instrument on ESO's Very Large Telescope has provided researchers with the best view yet of a spectacular cosmic crash. Observations reveal for the first time the motion of gas as it is ripped out of the galaxy ESO 137-001 as it ploughs at high speed into a vast galaxy cluster. The results are the key to the solution of a long-standing mystery -- why star formation switches off in galaxy

clusters. In this picture the colours show the motions of the gas filaments -- red means the material is moving away from Earth compared to the galaxy and blue that it is approaching. Note that the upper-left and lower-right parts of this picture have been filled in using the Hubble image of this object. Credit: ESO/M. Fumagalli

A team of researchers led by Michele Fumagalli from the Extragalactic Astronomy Group and the Institute for Computational Cosmology at Durham University, were among the first to use ESO's Multi Unit Spectroscopic Explorer (MUSE) instrument on the VLT. Observing ESO 137-001—a spiral galaxy 200 million light-years away in the southern constellation of Triangulum Australe (The Southern Triangle)—they were able to get the best view so far of exactly what is happening to the galaxy as it hurtles into the Norma Cluster.

MUSE gives astronomers not just a picture, but provides a spectrum—or a band of colours—for each pixel in the frame. With this instrument researchers collect about 90 000 spectra every time they look at an object, and thereby record a staggeringly detailed map of the motions and other properties of the observed objects.

ESO 137-001 is being robbed of its raw materials by a process called ram-pressure stripping, which happens when an object moves at high speed through a liquid or gas. This is similar to how air blows a dog's hair back when it sticks its head out of the window of a moving car. In this case the gas is part of the vast cloud of very thin hot gas that is enveloping the [galaxy cluster](#) into which ESO 137-001 is falling at several million kilometres per hour.

The galaxy is being stripped of most of its gas—the fuel needed to make the next generations of young blue stars. ESO 137-001 is in the midst of

this galactic makeover, and is being transformed from a blue gas-rich galaxy to a gas-poor red one. Scientists propose that the observed process will help to solve a long-standing scientific riddle.

"It is one of the major tasks of modern astronomy to find out how and why [galaxies](#) in clusters evolve from blue to red over a very short period of time," says Fumagalli. "Catching a galaxy right when it switches from one to the other allows us to investigate how this happens."

Observing this cosmic spectacle, however, is no mean feat. The Norma Cluster lies close to the plane of our own galaxy, the Milky Way, so it is hidden behind copious amounts of galactic dust and gas.

With the help of MUSE, which is mounted on one of the VLT's 8-metre Unit Telescopes at the Paranal Observatory in Chile, scientists could not only detect the gas in and around the galaxy, but were able to see how it moves. The new instrument is so efficient that a single hour of observing time was sufficient to obtain a high resolution image of the galaxy as well as the distribution and motion of its gas.

The observations show that the outskirts of ESO 137-001 are already completely devoid of gas. This is a result of the cluster gas—heated to millions of degrees—pushing the cooler gas out of ESO 137-001 as this drives towards the centre of the cluster. This happens first in the spiral arms where the stars and matter are more thinly spread than at the centre, and gravity has only a relatively weak hold over the gas. In the centre of the galaxy, however, the gravitational pull is strong enough to hold out longer in this cosmic tug-of-war and gas is still observed.

Eventually, all of the galactic gas will be swept away into bright streaks behind ESO 137-001—telltale remnants of this dramatic robbery. The gas that is torn away from the galaxy is mixed with the hot cluster gas to form magnificent tails extending to a distance of over 200 000 light-

years. The team had a closer look at these streams of gas to better understand the turbulence created by the interaction.

Surprisingly the new MUSE observations of this gas plume show that the gas continues to rotate in same way the galaxy does, even after being swept out into space. Furthermore, researchers were able to determine that the rotation of stars in ESO 137-001 remains unchanged. This provides further evidence for the cluster gas, not gravity, being responsible for stripping the galaxy.

Matteo Fossati (Universitäts-Sternwarte München and Max-Planck-Institut für extraterrestrische Physik, Garching, Germany) and a co-author of the paper concludes: "With the details revealed by MUSE we are getting closer to fully understanding the processes that go on in such collisions. We see the motions of the galaxy and the [gas](#) in detail—something that wouldn't be possible without the new and unique MUSE instrument. These and future observations will help us develop a better idea of what is driving the evolution of galaxies."

**More information:** Research paper (PDF):

[www.eso.org/public/archives/re ... eso1437/eso1437a.pdf](http://www.eso.org/public/archives/re...eso1437/eso1437a.pdf)

Provided by ESO

Citation: MUSE reveals true story behind galactic crash (2014, November 9) retrieved 1 May 2024 from <https://phys.org/news/2014-11-muse-reveals-true-story-galactic.html>

This document is subject to copyright. Apart from any fair dealing for the purpose of private study or research, no part may be reproduced without the written permission. The content is provided for information purposes only.
---