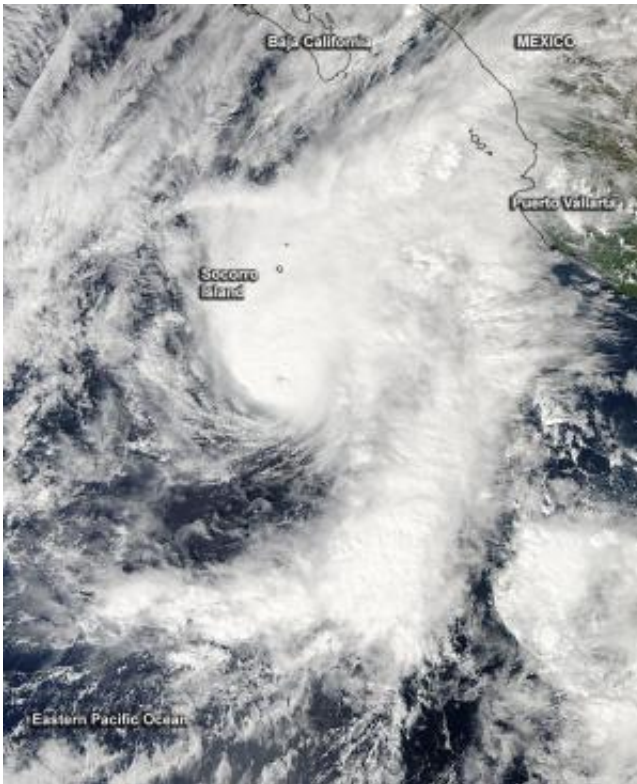


Aqua satellite sees Hurricane Vance headed for landfall in western Mexico

November 4 2014



NASA's Aqua satellite saw Hurricane Vance off Mexico's west coast on Nov. 3. Clouds covered Socorro Island and stretched as far east as Puerto Vallarta. Credit: NASA Goddard MODIS Rapid Response Team

NASA's Aqua satellite passed over Vance on Nov. 3 as it started moving in a northeasterly direction toward the northwestern coast of Mexico. On Nov. 4, a Tropical Storm Watch was in effect from Mazatlan northward

to Topolobampo, Mexico. Hurricane Vance is forecast to make landfall in northwestern mainland Mexico on Nov. 5.

On Nov. 3 at 20:50 UTC (3:50 p.m. EST) the Moderate Resolution Imaging Spectroradiometer or MODIS instrument that flies aboard NASA's Aqua satellite captured a visible image of Hurricane Vance off Mexico's west coast. The eastern quadrant of the storm covered Socorro Island and stretched as far east as Puerto Vallarta. Around the center of circulation were a thick band of strong thunderstorms that appeared bright white on the MODIS image. Vance's eye was no longer visible as it had filled in with clouds.

The National Hurricane Center (NHC) reported at 10 a.m. EST (7 a.m. PST/1500 UTC) on Nov. 4 that Vance's maximum sustained winds had decreased to 85 mph (140 kph) and rapid weakening was forecast. The center of Hurricane Vance was located near latitude 19.3 north and longitude 109.6 west. That puts the [center](#) of Vance about 100 miles (155 km) east-northeast of Socorro Island. Vance is moving toward the north-northeast near 13 mph (20 kph) and is expected to continue for the next couple of days.

Vance is expected to bring large amounts of rainfall to northwestern Mexico. Rainfall totals of 4 to

8 inches with isolated amounts near 12 inches through Wednesday, Nov. 5 over the states of Sinaloa, Nayarit and Durango in western Mexico. NHC noted that swells generated by Vance will be affecting portions of the coast of southwestern Mexico and Baja California Sur today and tonight.

Over the next 24 to 36 hours, Vance could weaken to a tropical depression by the time it reaches the coast of Mexico. Landfall is expected mid-day Wednesday, Nov. 5.

Provided by NASA's Goddard Space Flight Center

Citation: Aqua satellite sees Hurricane Vance headed for landfall in western Mexico (2014, November 4) retrieved 7 May 2024 from <https://phys.org/news/2014-11-aqua-satellite-hurricane-vance-landfall.html>

This document is subject to copyright. Apart from any fair dealing for the purpose of private study or research, no part may be reproduced without the written permission. The content is provided for information purposes only.