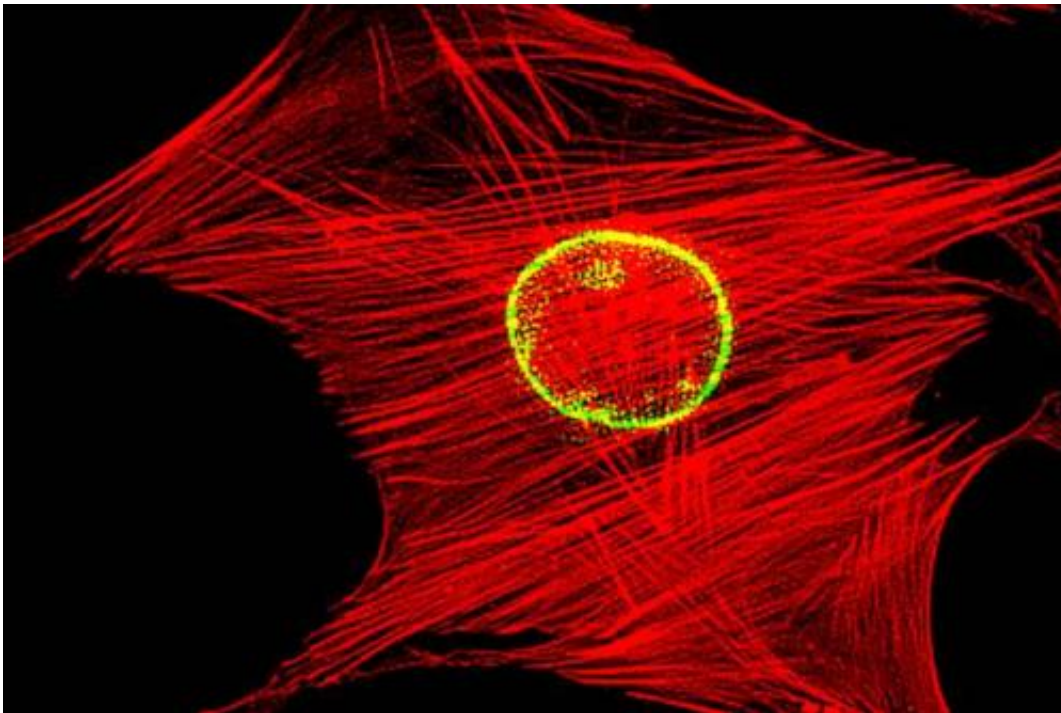


New technique allows scientists to find rare stem cells within bone marrow

October 6 2014, by Anne Trafton



MIT and SMART researchers have developed a way to isolate mesenchymal stem cells based on physical traits such as stiffness. Credit: MIT

Deep within the bone marrow resides a type of cells known as mesenchymal stem cells (MSCs). These immature cells can differentiate into cells that produce bone, cartilage, fat, or muscle—a trait that scientists have tried to exploit for tissue repair.

In a new study that should make it easier to develop such stem-cell-based therapies, a team of researchers from MIT and the Singapore-MIT Alliance in Research and Technology (SMART) has identified three physical characteristics of MSCs that can distinguish them from other [immature cells](#) found in the [bone marrow](#). Based on this information, they plan to create devices that could rapidly isolate MSCs, making it easier to generate enough stem cells to treat patients.

Until now, there has been no good way to separate MSCs from [bone marrow cells](#) that have already begun to differentiate into other cell types, but share the same molecules on the cell surface. This may be one reason why research results vary among labs, and why stem-cell treatments now in clinical trials are not as effective as they could be, says Krystyn Van Vliet, an MIT associate professor of materials science and engineering and biological engineering and a senior author of the paper, which appears in the *Proceedings of the National Academy of Sciences* this week.

"Some of the cells that you're putting in and calling stem cells are producing a beneficial therapeutic outcome, but many of the cells that you're putting in are not," Van Vliet says. "Our approach provides a way to purify or highly enrich for the stem cells in that population. You can now find the needles in the haystack and use them for human therapy."

Lead authors of the paper are W.C. Lee, a former graduate student at the National University of Singapore and SMART, and Hui Shi, a former SMART postdoc. Other authors are Jongyoon Han, an MIT professor of electrical engineering and biological engineering, SMART researchers Zhiyong Poon, L.M. Nyan, and Tanwi Kaushik, and National University of Singapore faculty members G.V. Shivashankar, J.K.Y. Chan, and C.T. Lim.

Physical markers

MSCs make up only a small percentage of cells in the bone marrow. Other immature cells found there include osteogenic cells, which have already begun the developmental path toward becoming cartilage- or bone-producing cells. Currently, researchers try to isolate MSCs based on protein markers found on the cell surfaces. However, these markers are not specific to MSCs and can also yield other types of immature cells that are more differentiated.

"Conventional cell-surface markers are frequently used to isolate different types of stem cells from the human bone marrow, but they lack sufficient 'resolution' to distinguish between subpopulations of mesenchymal stromal cells with distinct functions," Lee says.

The researchers set out to find biophysical markers for multipotency—the ability to become many different cell types. They first suspected that cell size might be a factor, because fetal bone marrow stem cells, which tend to have a higher percentage of MSCs, are usually small in diameter.

To test this hypothesis, the researchers used a device Han had previously developed to capture circulating [tumor cells](#) based on their size. They isolated bone marrow cells based on size and found that while none of the larger cells were multipotent, not all of the smaller cells were multipotent, so size alone cannot be used to distinguish MSCs.

After measuring several other physical traits, the researchers found two that could be combined with size to completely distinguish MSCs from other stem cells: stiffness of the cell, and the degree of fluctuation in the cell's nuclear membrane.

"You don't need more than these three, but you also can't use fewer than these three," Van Vliet says. "We now have a triplet of characteristics that identifies populations of cells that are going to be multipotent versus

populations of cells that are only going to be able to become bone or [cartilage cells](#)."

These features appear to correspond to what is already known about stem cells, Van Vliet says. Compared with cells that have already committed to their final fate, immature cells have genetic material that moves around inside the nucleus, producing more fluctuations of the nuclear cell membrane. Stem cells also have a less rigid cytoskeletal structure than those of highly differentiated cells, at least when adhered to materials such as glass, making those attached cells seem less stiff.

Better regeneration

The researchers then tested the regenerative abilities of the isolated MSCs in mice. They found that these cells could help repair both muscle and bone injuries, while cells identified as osteogenic stromal cells were able to repair bone but not muscle.

"We have provided the first demonstration that subpopulations of mesenchymal stromal cells can be identified and highly enriched for bone growth and muscle repair," Lee says. "We envision that this approach would also be important in the selection and purification of bone marrow-derived [stem cells](#) for tissue repair in human patients suffering from a range of tissue-degenerative diseases."

The team is now working on high-speed methods for separating MSCs. Creating more pure populations of such cells should lead to more effective stem-cell treatments for tissue injuries, Van Vliet says.

"Instead of putting in 30 percent of the cells that you want, and 70 percent filler, you're putting in 100 percent of the cells that you want," she explains. "That should lead to more reliable patient outcomes, because you're not going to have this variability from batch to batch, or

patient to patient, in how many of each cell population are present."

Van Vliet and Poon also hope to begin a clinical trial of the osteogenic [cells](#) isolated in this study, which could prove useful for treating bone injuries.

More information: Multivariate biophysical markers predictive of mesenchymal stromal cell multipotency, *PNAS*, www.pnas.org/cgi/doi/10.1073/pnas.1402306111

Provided by Massachusetts Institute of Technology

Citation: New technique allows scientists to find rare stem cells within bone marrow (2014, October 6) retrieved 13 March 2024 from <https://phys.org/news/2014-10-technique-scientists-rare-stem-cells.html>

<p>This document is subject to copyright. Apart from any fair dealing for the purpose of private study or research, no part may be reproduced without the written permission. The content is provided for information purposes only.</p>
--