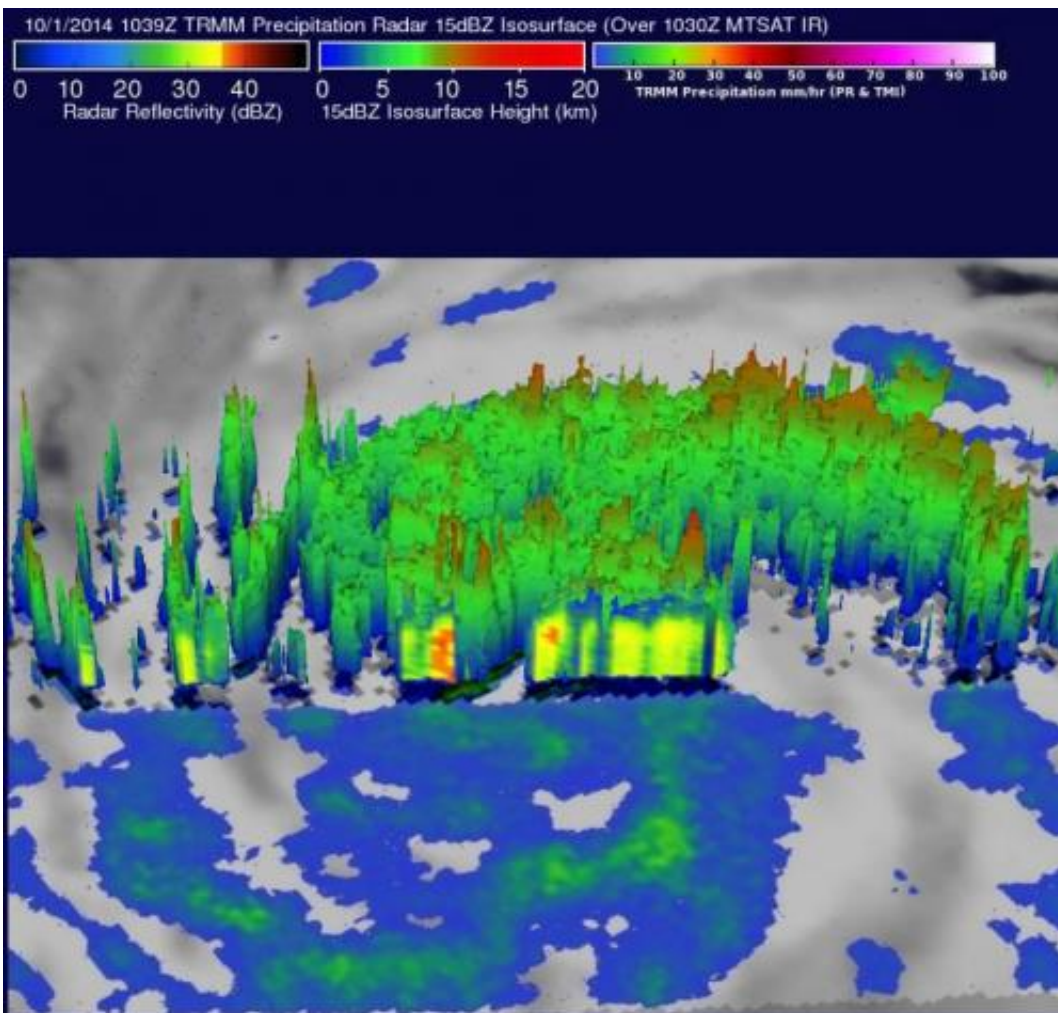


NASA sees intensifying typhoon Phanfone heading toward Japan

October 1 2014, by Hal Pierce



NASA's TRMM satellite saw Phanfone was producing rainfall over a very large area on Oct. 1. Some storms in these bands were dropping rain at a rate of over 76 mm (almost 3 inches) per hour. Credit: SSAI/NASA, Hal Pierce

An intensifying typhoon called Phanfone that originated east of Guam on September 28, 2014 is headed toward southern Japan. The TRMM satellite crossed above Typhoon Phanfone on October 1, 2014 at 1039 UTC and gathered data about rainfall rates occurring in the storm.

TRMM, or the Tropical Rainfall Measuring Mission satellite, is managed by both NASA and the Japan Aerospace Exploration Agency and can peer into a storm and determine how light or heavy rain is falling. At NASA's Goddard Space Flight Center in Greenbelt, Maryland, [rainfall data](#) from TRMM's Microwave Imager (TMI) Precipitation Radar (PR) was used to create an image of the storm.

Typhoon Phanfone's winds were estimated to be above 65 knots (about 75 mph/120 kph) at the time TRMM passed over the storm. Winds within the increasingly powerful [typhoon](#) are expected to increase to over 100 kts (115 mph/185 kph) in the next few days while moving toward the islands of southern Japan. This [rainfall analysis](#) revealed that Phanfone was producing rainfall over a very large area. The TRMM PR instrument identified some storms in these bands were dropping rain at a rate of over 76 mm (almost 3 inches) per hour.

On Oct. 1 at 1500 UTC (11 a.m. EDT), Typhoon Phanfone had maximum sustained winds near 70 knots (80 mph/129 kph). It was centered near 19.3 north latitude and 140.9 east longitude, about 348 nautical miles (400 miles/644.5 km) south of the island of Iwo To, Japan. Phanfone is moving to the north-northwest at 10 knots (11.5 mph/18.5 kph).

The Joint Typhoon Warning Center forecasts Phanfone to continue moving in a northwesterly direction for the next couple of days before curving to the northeast where a landfall is expected in Japan by Oct. 6.

Provided by NASA's Goddard Space Flight Center

Citation: NASA sees intensifying typhoon Phanfone heading toward Japan (2014, October 1)
retrieved 13 April 2024 from <https://phys.org/news/2014-10-nasa-typhoon-phanfone-japan.html>

This document is subject to copyright. Apart from any fair dealing for the purpose of private study or research, no part may be reproduced without the written permission. The content is provided for information purposes only.