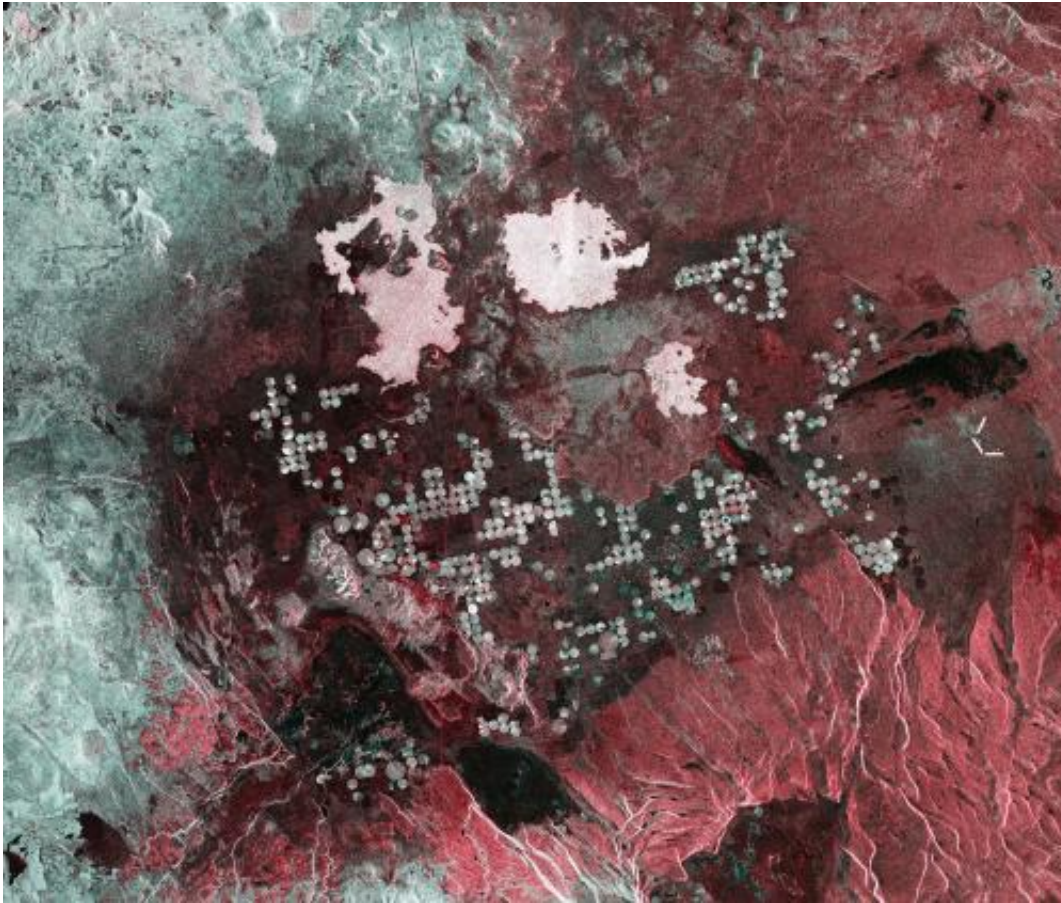


Image: Lake County, Oregon from orbit

October 17 2014



Credit: ESA

This image from Sentinel-1A was acquired over the Lake County in the US state of Oregon on 17 July.

Even though the northwestern United States receives plenty of rainfall,

the 'high [desert region](#)' east of the Cascade Mountain Range is fairly dry. Most crops require irrigation, such as the circles visible in this image from a centre pivot irrigation system.

Sentinel-1's [radar](#) gathers information in either horizontal or vertical radar pulses, and colours were assigned to the different types. In this image, rough surfaces – like vegetated areas – appear white and light blue while smoother surfaces are red and black.

Some of the black areas are – or once were – lakes. These lakes formed when glaciers melted after the last ice ages, but dried up as the climate became drier.

Running north–south through the centre of the image we see a line of evenly dispersed red dots. These are reflections from metal towers holding power lines. While these structures are difficult to spot in optical imagery, their reflectivity makes them more visible to radar.

Launched in April, Sentinel-1A recently completed its commissioning phase, ensuring that the satellite, instruments, data acquisition and data processing procedures are working well. During this phase, it manoeuvred eight times to avoid [space debris](#).

The satellite is now fully operational delivering [radar data](#) for an array of services and scientific research.

Provided by European Space Agency

Citation: Image: Lake County, Oregon from orbit (2014, October 17) retrieved 26 April 2024 from <https://phys.org/news/2014-10-image-lake-county-oregon-orbit.html>

This document is subject to copyright. Apart from any fair dealing for the purpose of private

study or research, no part may be reproduced without the written permission. The content is provided for information purposes only.