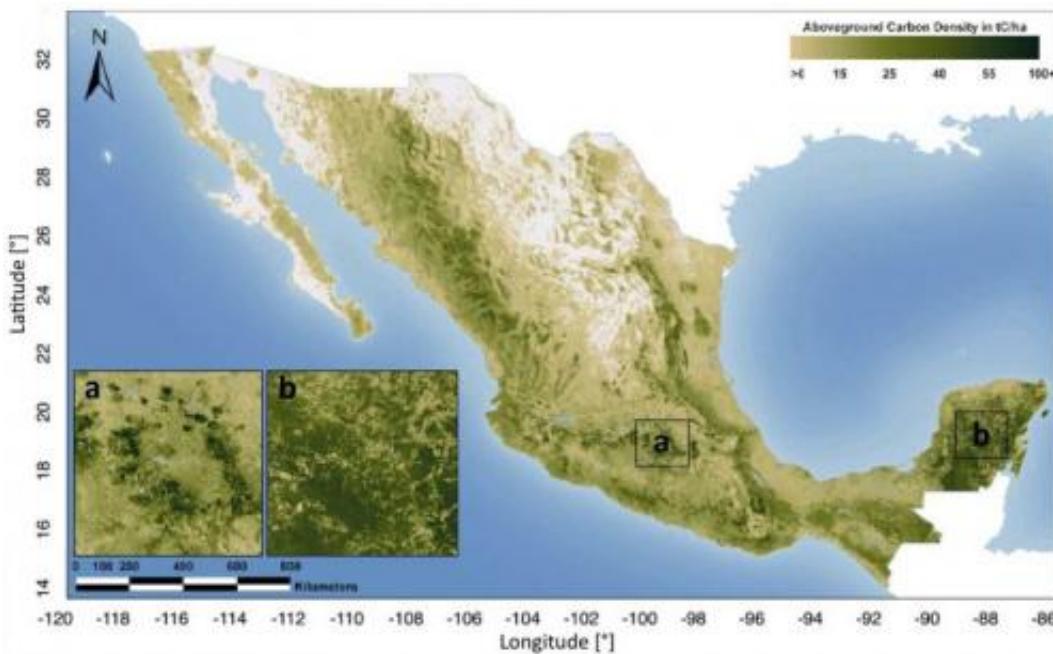


First detailed map of aboveground forest carbon stocks in Mexico unveiled

October 16 2014



This is a map of forest aboveground carbon stocks derived from national forest inventory and satellite (Landsat and ALOS PALSAR) data sets. Credit: Woods Hole Research Center

Available for download today, the Woods Hole Research Center (WHRC) and Alianza MREDD+ released the first detailed map of aboveground forest carbon stocks of Mexico. This carbon stock inventory is very valuable for Mexico, as one of the first tropical nations to voluntarily pledge to mitigation actions within the context of the United Nation's Reducing Emissions from Deforestation and forest

Degradation (REDD+) program.

The hectare-scale map is the result of a collaboration led by WHRC scientists Josef Kellndorfer and Oliver Cartus with Mexico's National Forestry Commission (CONAFOR) and the Mexican Norway Project (MNP) to provide a tool for the national government to enhance a robust Measurement, Reporting and Verification (MRV) system for national [carbon emissions](#).

"The release of this data set is an important step forward in the accounting for carbon flux in Mexico and in supporting efforts to reduce carbon emissions from the land sector," says Dr. Kellndorfer. "We see the potential for these biomass data sets to be generated by other tropical nations." The map integrates Mexico's National Forest Inventory (INFyS), which provides field measurements for 26,000 plots across Mexico with spatial image data from the Japanese ALOS PALSAR radar and U.S. Landsat satellite sensors, which contain complementary information on forest density and structure. The fusion of these three datasets allows for continuous estimates of carbon stocks where field data are missing even for those classes not very well represented in the national forest inventory. The team is currently testing airborne lidar data in a range of Mexico's ecosystems as an option to augment field observations with airborne and satellite data to improve [carbon](#) mapping for countries without detailed forest inventories.

Rane Cortez from The Nature Conservancy, Chief of Party of the Alianza MREDD+ states, "Mexico is quickly becoming a leader on REDD+ and can serve as a model for other countries. This biomass map and dataset represent one of the important advancements that Mexico has made in developing its national monitoring system and will help the country prioritize its strategies and investments for reducing emissions from deforestation."

More information: For more information and to obtain data access, please visit [whrc.org/mapping/pantropical/m ... bon/mex_dataset.html](http://whrc.org/mapping/pantropical/m...bon/mex_dataset.html)

Provided by Woods Hole Research Center

Citation: First detailed map of aboveground forest carbon stocks in Mexico unveiled (2014, October 16) retrieved 26 April 2024 from <https://phys.org/news/2014-10-aboveground-forest-carbon-stocks-mexico.html>

This document is subject to copyright. Apart from any fair dealing for the purpose of private study or research, no part may be reproduced without the written permission. The content is provided for information purposes only.