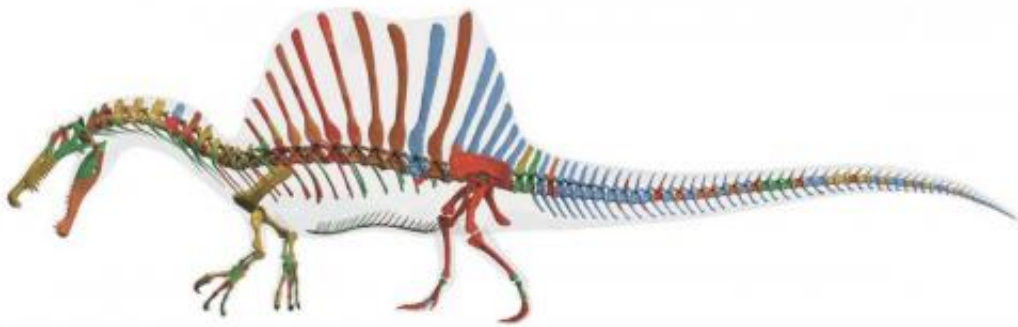


# Shark-munching Spinosaurus was first-known water dinosaur

September 11 2014, by Kerry Sheridan

---



Digital skeletal reconstruction and transparent flesh outline of *Spinosaurus aegyptiacus*. Color codes are used to show the origin of different parts of the digital skeletal model. Bones of the neotype and for *Suchomimus tenerensis* were CT-scanned, surfaced and size-adjusted before being added to the model. Color coding: red, neotype (FSAC-K 11888); orange, Stromer's bones; yellow, isolated bones from the Kem Kem; green, surrogate bones modeled or taken from the spinosaurids *Suchomimus*, *Baryonyx*, *Irritator* or *Ichthyovenator*; blue, inferred bones from adjacent bones. A red dot below the posterior dorsal centra shows the approximate position of the center of mass. Credit: Model by Tyler Keillor, Lauren Conroy, and Erin Fitzgerald, Ibrahim et al., *Science*

There once was a dinosaur, bigger than a T. rex, that swam with the sharks—and ate them for dinner.

The first evidence that a fierce and well-known meat-munching dinosaur, *Spinosaurus aegyptiacus*, was adapted for both land and water was featured in the US journal *Science* on Thursday.

Picture a giant hybrid of a duck and a crocodile that lived 95 million years ago, sloshing through rivers and feasting on prehistoric sharks, sawfish and lungfish.

The 20-metric-ton beast boasted a crest on its back, akin to a boat's sail, held aloft with spines as tall as an average human.

Its long tail, narrow hips and paddle-shaped feet likely helped the 50-foot-long (15-meter) creature move through the water with ease, experts said.

*Spinosaurus* also had dense bones to help control its buoyancy in water, and a long snout with high-set nostrils that could allow easy breathing while partially submerged.

"Taken together, these features strongly suggest that *Spinosaurus* was the first dinosaur that spent a significant amount of time in the water," said lead author Nizar Ibrahim, a paleontologist at the University of Chicago.

## **Movie scenes 'wrong'**

The 2001 movie *Jurassic Park III* features a scene in which a *Spinosaurus* attacks a *Tyrannosaurus rex* and snaps the legendary carnivore's neck.

Scientists have long known the scene was not accurate. *T. rex* lived in North America some 30 million years after *Spinosaurus* disappeared, and *Spinosaurus* bones have been unearthed only in Africa.

But Paul Sereno, a paleontologist and co-author of the study also from the University of Chicago, said the latest research casts even more doubt on that Hollywood portrayal.

Spinosaurus might have made nests for its young on land but the front-heavy creature would not have been particularly agile on solid ground, he said.



Skull reconstruction of *Spinosaurus aegyptiacus* showing discovered bones. Skull bones that are known in *S. aegyptiacus* are shown in blue. Credit: Artwork by Davide Bonadonna, Ibrahim et al., Science

"I think that we have to face the fact that the 'Jurassic Park' folks have to go back to the drawing board on Spinosaurus," Sereno told reporters.

"The evidence suggests it could not balance for a long period of time on its hind limbs."

Sereno said the Spinosaurus appeared to have "bodily adaptations showing transitions from a land-based predator to a semi-aquatic predator."

## **Lost in WWII**

Bones from the predator's skull, vertebra, pelvis and limbs were found last year along an old riverbank in the Sahara desert, in the Kem Kem beds of eastern Morocco.

The discovery was a boon to paleontologists, who have had little to study when it came to Spinosaurus even though it was first identified from bones found in Egypt in 1912 by German paleontologist Ernst Freiherr Stromer von Reichenbach.

That collection was destroyed during World War II. In 1944, British airplanes bombed the Munich museum where they were kept.

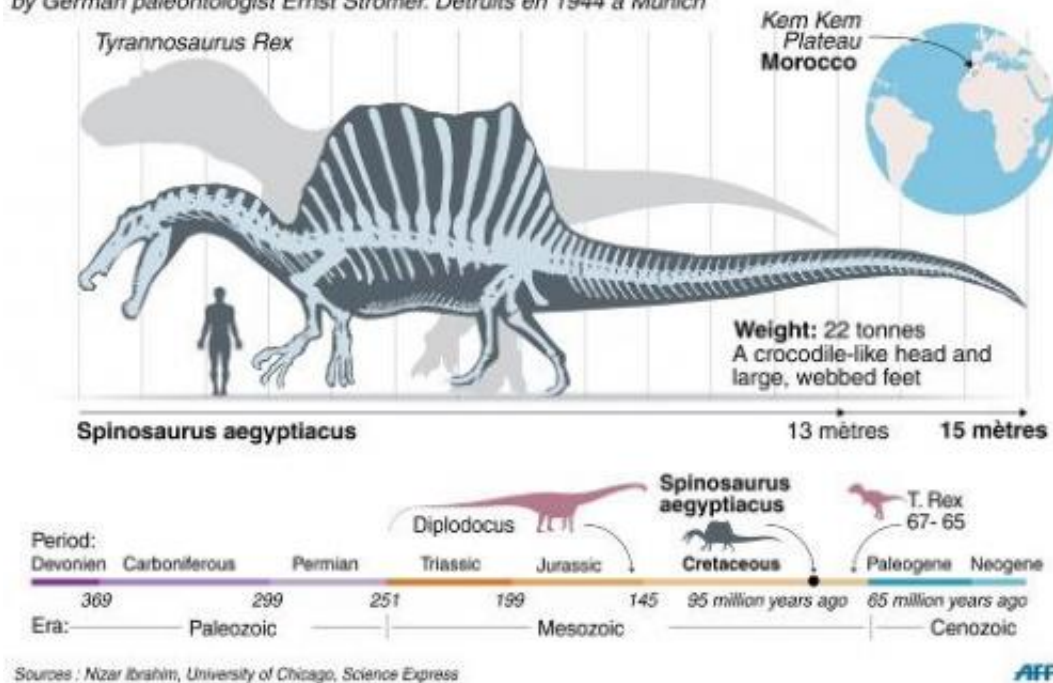
However, not all experts are convinced that the latest findings show a swimming dinosaur.

Ken Carpenter, director and curator of paleontology at the Prehistoric Museum in Price, Utah, said the waters in the region might not have been deep enough for it to truly swim.

## The Spinosaurus: lethal on land and in the water

A long tail, narrow hips and paddle-shaped feet made it an excellent swimmer

The first fossils of the Spinosaurus were uncovered at the start of the 20th century by German paleontologist Ernst Stromer. Détruits en 1944 à Munich



Details on the Spinosaurus, a massive dinosaur that was deadly on land and in the water

"The rivers in the land of Spinosaurus were small and undoubtedly shallow (hip deep at most)," Carpenter told AFP in an email.

"As for the anatomical evidence, there are lots of alternative hypotheses to explain the oddities," he added.

"The high placement of the nostrils occurs in other dinosaurs. Such an occurrence was once used as evidence that Diplodocus was aquatic."

Diplodocus was a massive, long-necked plant-eating dinosaur that lived about 150 million years ago.

"That idea has since been dropped in part because evidence of large, deep bodies of water are missing from the formation Diplodocus is found in," Carpenter said.

Researchers who worked on the paper said it is still unclear exactly how the dinosaur swam, or what its motion looked like in the water.

"It's a half-duck, half-crocodile. We don't have anything alive that looks like this animal that we can use alone as a model," Sereno said.

"It makes it particularly interesting to figure out in the future what it was doing."

An exhibit featuring a life-sized model of the Spinosaurus opens to the public at the National Geographic Museum in Washington on Friday.

**More information:** Paper: "Semiaquatic adaptations in a giant predatory dinosaur," by N. Ibrahim et al. *Science*,  
[www.sciencemag.org/lookup/doi/.../1126/science.1258750](http://www.sciencemag.org/lookup/doi/.../1126/science.1258750)

The life-size skeletal replica will be the centerpiece of a new exhibition at the National Geographic Museum in Washington, D.C., titled "Spinosaurus: Lost Giant of the Cretaceous." The exhibition, which runs from Sept. 12, 2014, to April 12, 2015, brings to life the story of Spinosaurus, from Stromer's original discoveries to the dedicated efforts of the international research team working to unlock its secrets. For more information on this interactive, multimedia experience developed in collaboration with UChicagoTech, the university's Center for Technology Development & Ventures, visit [ngmuseum.org](http://ngmuseum.org).

The global search to uncover the Spinosaurus skeleton and its mysteries will also be featured in a National Geographic/NOVA special, "Bigger Than T.rex," airing on PBS Nov. 5, 2014, at 9 p.m.

© 2014 AFP

Citation: Shark-munching Spinosaurus was first-known water dinosaur (2014, September 11)  
retrieved 20 March 2024 from <https://phys.org/news/2014-09-shark-munching-spinosaurus-first-known-dinosaur.html>

This document is subject to copyright. Apart from any fair dealing for the purpose of private study or research, no part may be reproduced without the written permission. The content is provided for information purposes only.