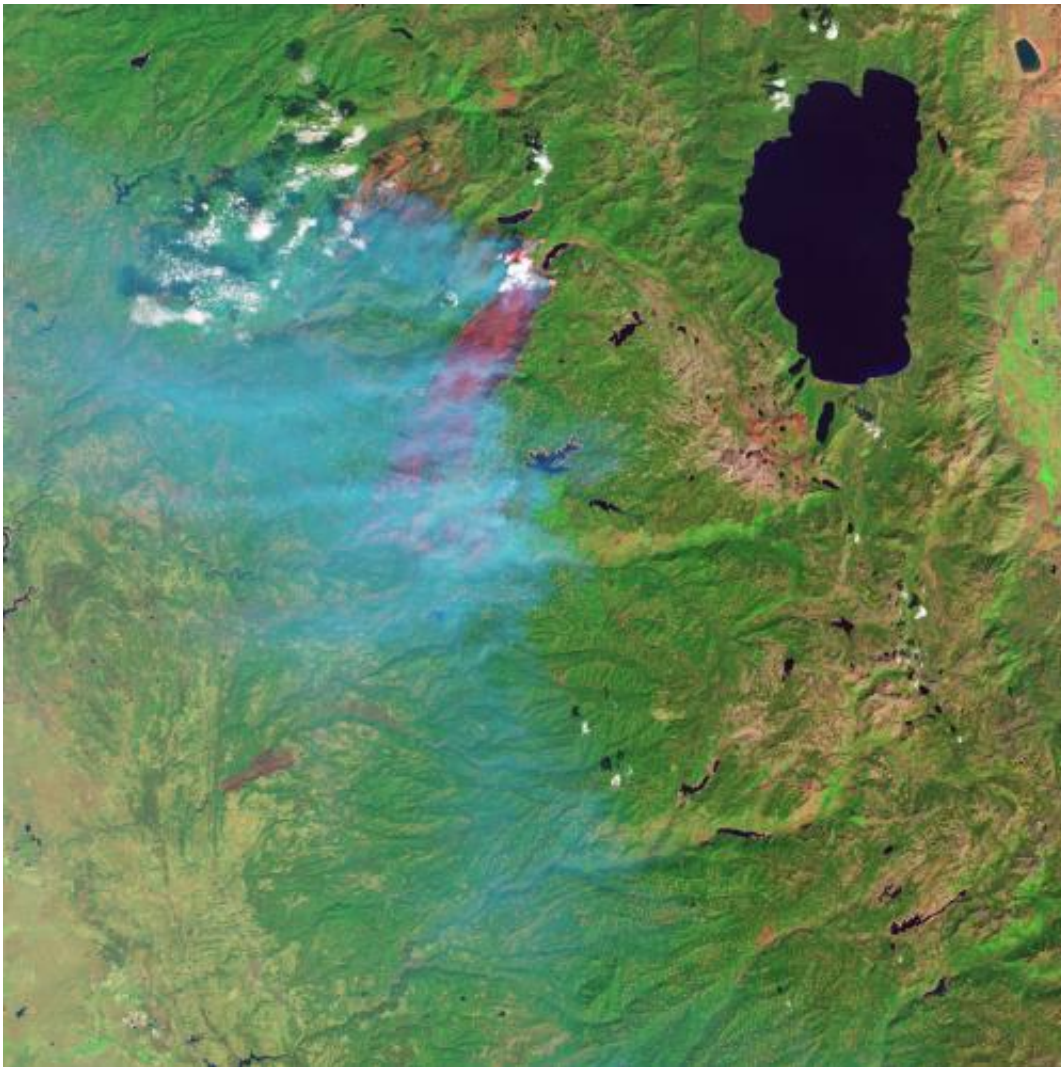


# NASA image: King fire in California, false-color infrared

September 25 2014

---



Credit: NASA Earth Observatory image by Jesse Allen, using Landsat data from the U.S. Geological Survey

On Sept. 19, 2014, the Operational Land Imager (OLI) on the Landsat 8 satellite captured these images of the King fire in Eldorado National Forest.

In the false-color image, burned forest appears red; unaffected forests are green; cleared forest is beige; and smoke is blue.

As of Sept. 23, the blaze had charred 36,320 hectares (89,571 acres).

Provided by NASA

Citation: NASA image: King fire in California, false-color infrared (2014, September 25) retrieved 11 May 2024 from <https://phys.org/news/2014-09-nasa-image-king-california-false-color.html>

This document is subject to copyright. Apart from any fair dealing for the purpose of private study or research, no part may be reproduced without the written permission. The content is provided for information purposes only.