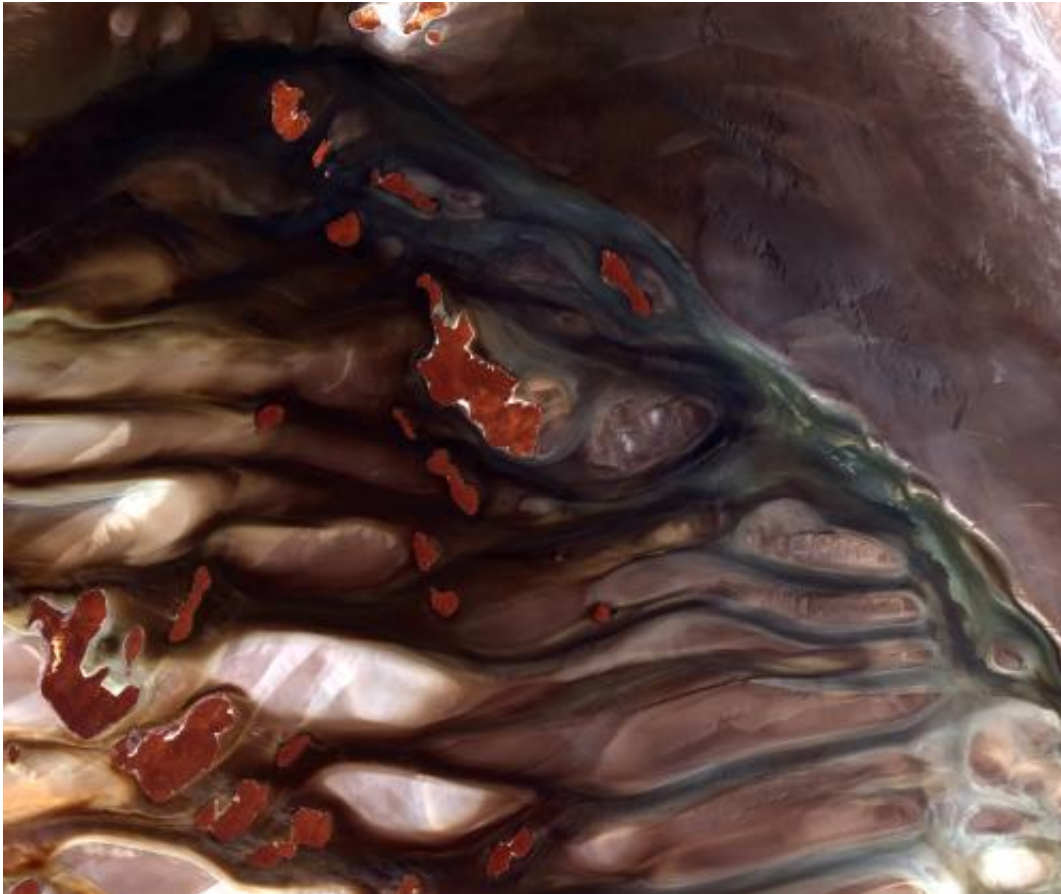


ESA image: Lake Gairdner from orbit

September 12 2014



Credit: JAXA/ESA

Lake Gairdner in central South Australia is pictured in this image acquired by Japan's ALOS satellite on 1 December 2009.

The Lake Gairdner National Park – which includes the nearby lakes

Everard and Harris – was established in 1991 for its significant wildlife habitat and natural features.

While the area is hot and dry in summer, spring brings water and is a popular destination for birdwatchers. Red and western grey kangaroos, emus and [feral camels](#) can also be seen here.

When flooded, Gairdner is one of the largest salt lakes in Australia, more than 160 km long and 48 km wide. But when dry, the vast salt pan attracts racers attempting to set land speed records and is the site for the annual Speed Week event.

This image shows mostly the dry, salt-crust lakebed, while the islands appear brick-red.

Provided by European Space Agency

Citation: ESA image: Lake Gairdner from orbit (2014, September 12) retrieved 26 June 2024 from <https://phys.org/news/2014-09-esa-image-lake-gairdner-orbit.html>

This document is subject to copyright. Apart from any fair dealing for the purpose of private study or research, no part may be reproduced without the written permission. The content is provided for information purposes only.