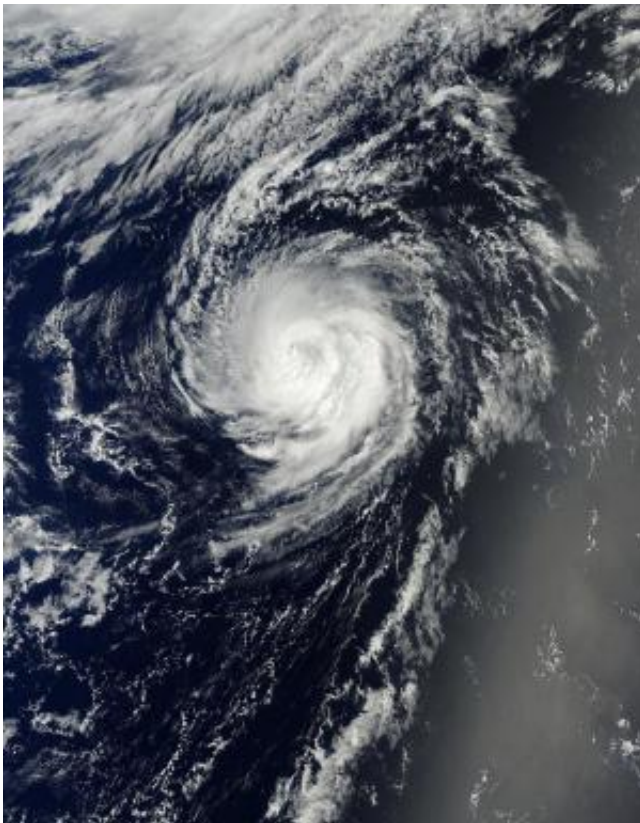


NASA sees Tropical Storm Julio now far from Hawaii

August 14 2014



On Aug. 13 at 21:10 UTC (5:10 p.m. EDT), the MODIS instrument aboard NASA's Terra satellite captured this visible image of Hurricane Julio moving through the Central Pacific Ocean. Credit: NASA Goddard MODIS Rapid Response Team

Hurricane Julio moved past the Hawaiian Islands like a car on a highway in the distance, and NASA's Terra satellite captured an image of the

storm, now downgraded to a tropical storm located more than 700 miles away. Julio is far enough away from Hawaii so that there are no coastal watches or warnings in effect.

On August 13 at 21:10 UTC (5:10 p.m. EDT), the Moderate Resolution Imaging Spectroradiometer of MODIS instrument aboard NASA's Terra satellite captured a [visible image](#) of Hurricane Julio moving through the Central Pacific Ocean. The visible image shows that powerful thunderstorms still circled the center of the storm, and that Julio still had an eye, although somewhat obscured by clouds. Bands of thunderstorms continued to wrap into the center of circulation from the eastern side of the storm.

On August 14 at 5 a.m. HST (11 a.m. EDT/1500 UTC) the center of Tropical Storm Julio was located near latitude 31.6 north, longitude 158.5 west. That puts the center about 710 miles (1,145 km) north of Honolulu Hawaii. Maximum sustained winds are near 65 mph (100 kph) and weakening is forecast through Saturday morning, August 16. Julio was moving toward the northeast near 5 mph (7 kph) and is expected to turn north by August 15, according to NOAA's Central Pacific Hurricane Center (CPHC).

Today, August 14, satellite data showed that wind shear had begun taking its toll on Julio. The CPHC noted "deep convection (rising air that forms thunderstorms that make up the [tropical storm](#)) associated with Julio has been pushed away more than 60 nautical miles to the south of the low-level center."

CPHC expects Julio to weaken to a post-tropical depression over the weekend of August 16 and 17.

Provided by NASA's Goddard Space Flight Center

Citation: NASA sees Tropical Storm Julio now far from Hawaii (2014, August 14) retrieved 25 April 2024 from <https://phys.org/news/2014-08-nasa-tropical-storm-julio-hawaii.html>

This document is subject to copyright. Apart from any fair dealing for the purpose of private study or research, no part may be reproduced without the written permission. The content is provided for information purposes only.