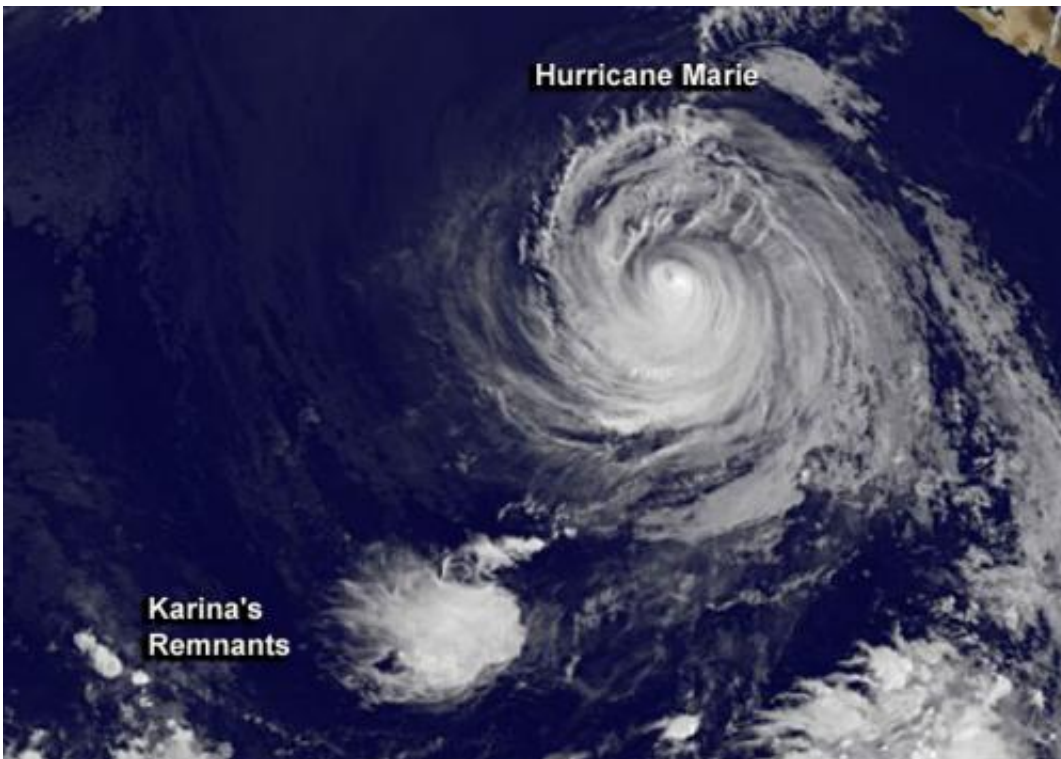


Karina's remnants drawn into Hurricane Marie's spin

August 27 2014, by Rob Gutro



At 5 a.m. EDT on Aug. 27, NOAA's GOES-West satellite showed that the now shapeless former hurricane was being drawn into nearby Hurricane Marie's circulation. Credit: NASA/NOAA GOES Project

Karina finally became a remnant low pressure area after roaming around in the Eastern Pacific for two weeks. Satellite data on August 27 showed that the now shapeless former hurricane was being drawn into nearby Hurricane Marie's circulation.

The last bulletin on Karina was issued by the National Hurricane Center on August 27 at 0300 UTC (11 p.m. EDT on Tuesday, August 26).

At that time, Karina's maximum sustained winds were near 30 mph (45 kph). It was centered near latitude 15.9 north and longitude 126.5 west. That's 1,185 miles (1,905 km) west-southwest of the southern tip of Baja California, Mexico. Karina was moving toward the southeast near 5 mph (7 kph) and was expected to turn east-northeast as it continues moving around Hurricane Marie's circulation.

Infrared imagery from NOAA's GOES-West satellite on August 27 at 0900 UTC (5 a.m. EDT) showed the remnants of Karina caught up in Hurricane Marie's circulation. Karina's remnants appeared as a formless shape of clouds southwest of Marie. The GOES image was created by NASA/NOAA's GOES Project at the NASA Goddard Space Flight Center in Greenbelt, Maryland.

Karina is expected to open up into a trough (elongated area) of low pressure late on Wednesday, August 27 as it continues to be drawn around Hurricane Marie.

Provided by NASA's Goddard Space Flight Center

Citation: Karina's remnants drawn into Hurricane Marie's spin (2014, August 27) retrieved 10 April 2024 from <https://phys.org/news/2014-08-karina-remnants-drawn-hurricane-marie.html>

<p>This document is subject to copyright. Apart from any fair dealing for the purpose of private study or research, no part may be reproduced without the written permission. The content is provided for information purposes only.</p>
--