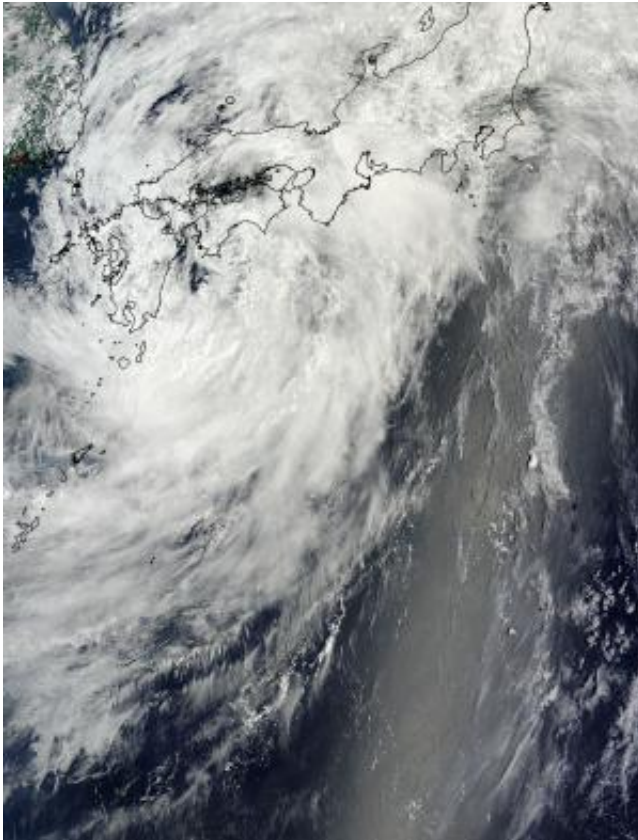


NASA sees Tropical Storm Neoguri losing punch along southern Japan's coast

July 10 2014



On July 10 at 0:35 UTC, the MODIS instrument aboard NASA's Terra satellite captured a more disorganized Tropical Storm Neoguri over east central Japan. Neoguri's center was east of Kyushu, Japan. Credit: NASA Goddard MODIS Rapid Response Team

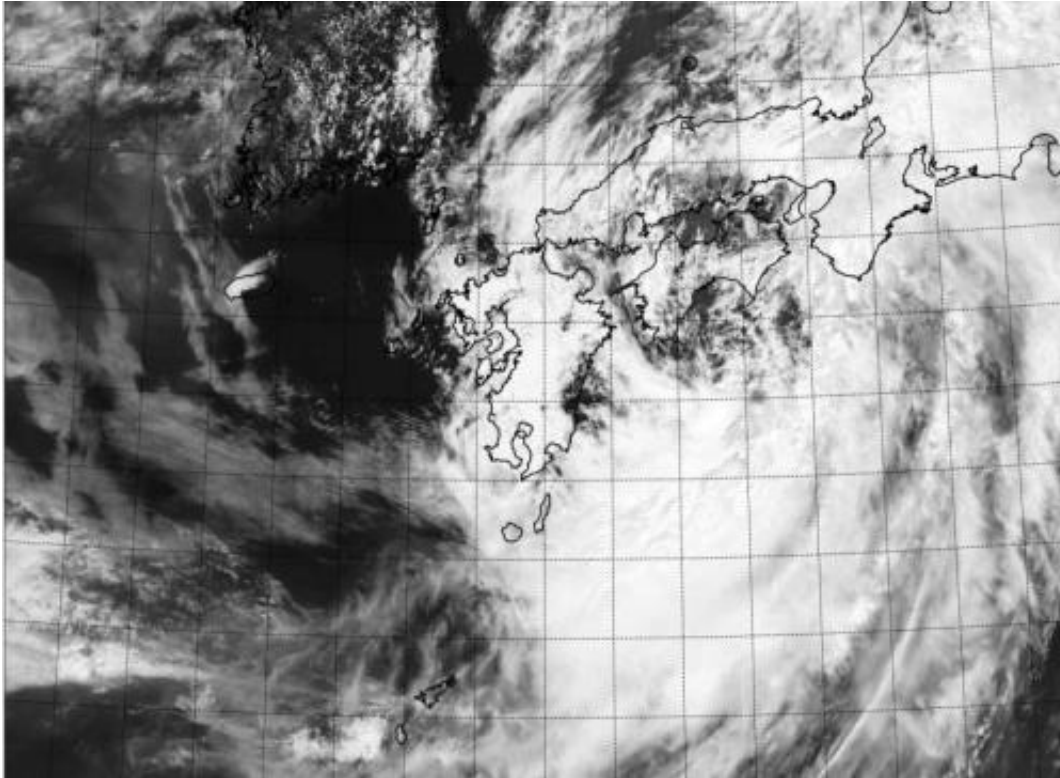
Once a powerful super typhoon, now an weakening tropical storm,

NASA's Terra satellite saw a much weaker Tropical Storm Neoguri moving along the southern coast of Japan.

On July 10 at 0:35 UTC, the Moderate Resolution Imaging Spectroradiometer (MODIS) instrument aboard NASA's Terra satellite captured an image of a more disorganized Tropical Storm Neoguri over east central Japan. At the time of the image, a more elongated Tropical Storm Neoguri's center was east of Kyushu, Japan.

A visible image from the Visible Infrared Imaging Radiometer Suite (VIIRS) instrument aboard NASA-NOAA's Suomi NPP satellite taken July 10 at 03:59 UTC showed a more elongated Tropical Storm Neoguri off Japan's southern coast. VIIRS collects visible and infrared imagery and global observations of land, atmosphere, cryosphere and oceans.

On July 10 at 09:00 UTC (5 a.m. EDT), the Joint Typhoon Warning Center (JTWC) noted that Tropical Storm Neoguri's maximum sustained winds had dropped to 45 knots (51.7 mph/83.3 kph). Neoguri was centered near 33.8 north latitude and 135.8 east longitude, or about 127 nautical miles (146.1 miles/235.2 km) southeast of Iwakuni, Japan. Neoguri has tracked east-northeastward at 29 knots (33.3 mph/53.7 kph). Earlier in the week, when Neoguri was a super-typhoon, it was generating seas over 45 feet high (13.7 meters). Now, as a [tropical storm](#), Neoguri is kicking up maximum wave heights near 8 feet (2.4 meters).



This visible image from the VIIRS instrument aboard NASA-NOAA's Suomi NPP satellite taken July 10 at 03:59 UTC showed an elongated Tropical Storm Neoguri off Japan's southern coast. Credit: NASA/NOAA

Radar from the Japanese Meteorological agency showed that Neoguri had an exposed low-level circulation center and the development of thunderstorms was waning. Moderate to strong southwesterly wind shear of 20 to 30 knots (23.0 to 34.5 mph/37.0 to 55.5 kph) was pushing Neoguri's thunderstorms northeast of the center of circulation.

Provided by NASA's Goddard Space Flight Center

Citation: NASA sees Tropical Storm Neoguri losing punch along southern Japan's coast (2014, July 10) retrieved 9 June 2023 from <https://phys.org/news/2014-07-nasa-tropical-storm-neoguri-southern.html>

This document is subject to copyright. Apart from any fair dealing for the purpose of private study or research, no part may be reproduced without the written permission. The content is provided for information purposes only.