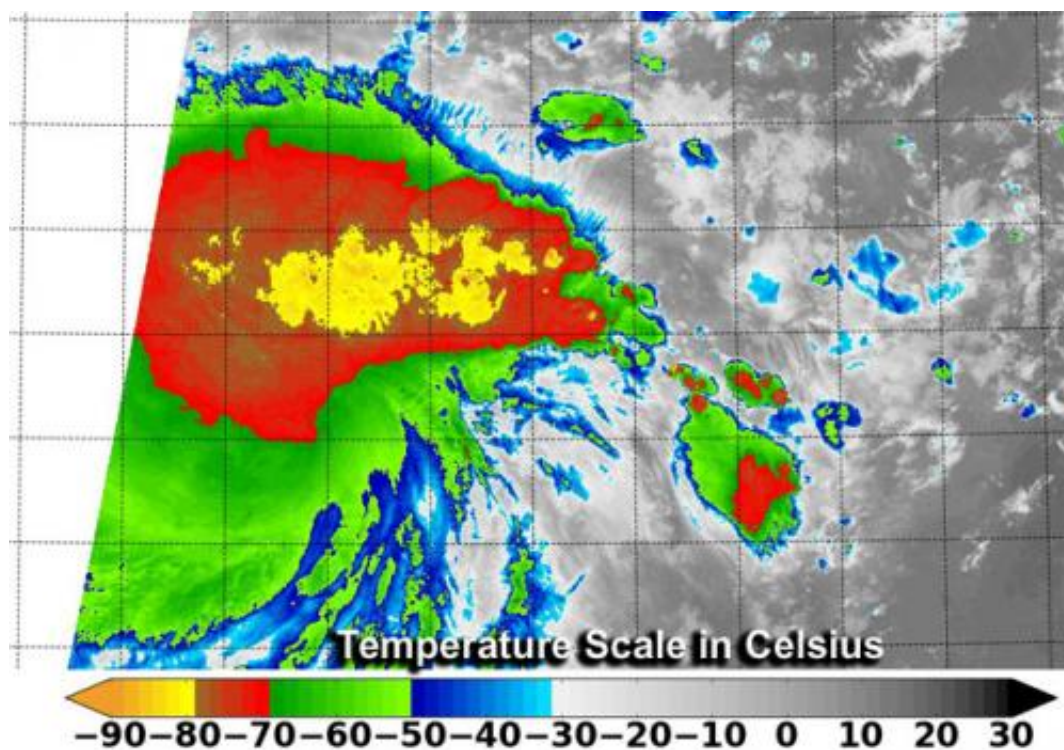


NASA-NOAA Suomi NPP satellite sees power within newborn Tropical Depression 09W

July 10 2014



This infrared image from the VIIRS instrument aboard NASA-NOAA's Suomi NPP satellite taken July 10 at 14:48 UTC showed very cold cloud top temperatures in newborn Tropical Depression 09W. Credit: NASA/NOAA

As the Northwestern Pacific is bidding goodbye to Tropical Cyclone Neoguri, another tropical depression has formed. NASA-NOAA's Suomi

NPP satellite passed over Tropical Depression 09W (TD09W) and captured infrared data on the storm indicating some powerful thunderstorms within.

Because TD09W is close to land areas, watches are already in effect. On July 10, a tropical storm watch is in force for Guam, Rota, Tinian and Saipan.

Tropical depression 09W was formerly known as low pressure System 92W. VIIRS instrument aboard NASA-NOAA's Suomi NPP satellite taken July 10 at 14:48 UTC showed cold cloud top temperatures in newborn Tropical Depression 09W.

An infrared image from the Visible Infrared Imaging Radiometer Suite (VIIRS) instrument aboard NASA-NOAA's Suomi NPP satellite taken July 10 at 14:48 UTC (10:48 a.m. EDT) showed cold cloud top temperatures in newborn Tropical Depression 09W. VIIRS saw extremely cold cloud top temperatures near -80C (-112F). Temperatures that cold in Tropical Depression 09W are indicative of thunderstorms reaching high in the troposphere, and they are capable of producing heavy rain.

VIIRS collects visible and infrared imagery and global observations of land, atmosphere, cryosphere and oceans. VIIRS flies aboard the Suomi NPP [satellite](#), which is managed by both NASA and NOAA.

At 1500 UTC (10 a.m. EDT) on July 10, Tropical Depression 09W had maximum sustained winds near 25 knots. It was located near 10.8 north latitude and 150.5 east longitude, about 372 nautical miles east-southeast of Andersen Air Force Base, Guam. TD09W was moving to the northwest at 15 knots.

The Joint Typhoon Warning Center expects TD09W to move past the

southern islands of the Marianas and gradually strengthen into a typhoon.

Provided by NASA's Goddard Space Flight Center

Citation: NASA-NOAA Suomi NPP satellite sees power within newborn Tropical Depression 09W (2014, July 10) retrieved 26 April 2024 from <https://phys.org/news/2014-07-nasa-noaa-suomi-npp-satellite-power.html>

This document is subject to copyright. Apart from any fair dealing for the purpose of private study or research, no part may be reproduced without the written permission. The content is provided for information purposes only.