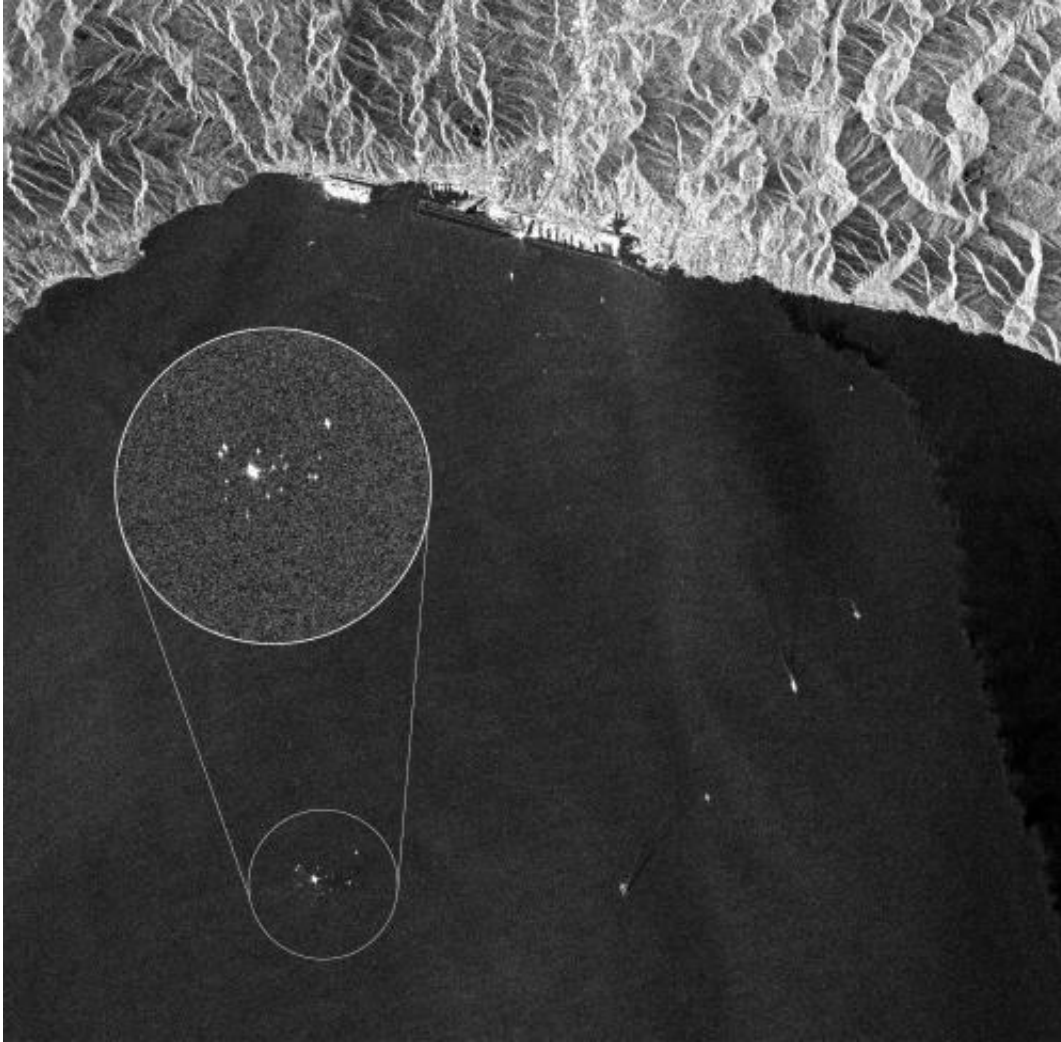


Image: Towing the Costa Concordia

July 31 2014



Credit: ESA

This Sentinel-1A image was acquired on 26 July 2014 over the coast of northwestern Italy while the Costa Concordia cruise ship (enlarged) was

being towed towards the city of Genoa.

The ship capsized near the island of Giglio in January 2012. Following more than two years of salvage operations, the ship began its final journey under tow on 23 July 2014, arriving at the port of Genoa four days later.

During and after the towing, satellite radar images – such as the one here – were analysed, with the technical support of the European Commission's Joint Research Centre. This was done for scientific research purposes to assess the Sentinel-1A and other satellite radar images for pollution and [ship traffic](#).

Sentinel-1A is the first [satellite](#) launched for Europe's Copernicus environment monitoring programme. Surveillance of the marine environment, including oil-spill monitoring and ship detection, is one of the mission's main tasks. Although Sentinel-1A is still being commissioned to prepare for routine operations, early images like this demonstrate the value of its radar vision.

Provided by European Space Agency

Citation: Image: Towing the Costa Concordia (2014, July 31) retrieved 9 May 2024 from <https://phys.org/news/2014-07-image-costa-concordia.html>

This document is subject to copyright. Apart from any fair dealing for the purpose of private study or research, no part may be reproduced without the written permission. The content is provided for information purposes only.