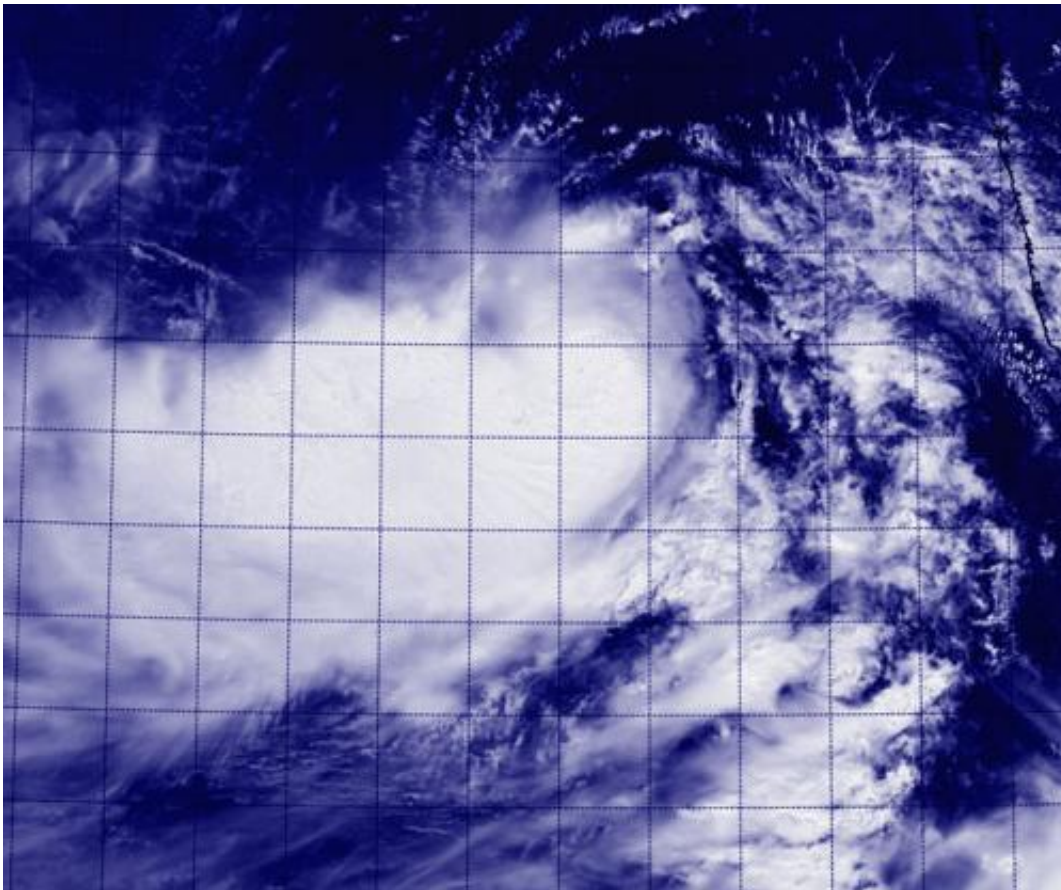


NASA-NOAA's Suomi NPP satellite spots Arabian Sea tropical cyclone

June 10 2014, by Rob Gutro



This visible image from June 10 at 5:23 a.m. EDT from the VIIRS instrument aboard NASA-NOAA's Suomi NPP satellite showed the strong thunderstorms south of the center of Tropical Storm 02A in the Arabian Sea. Credit: NASA JPL, Ed Olsen

Tropical Cyclone 02A formed in the Arabian Sea as NASA-NOAA's Suomi NPP satellite passed overhead and captured a visible photo of the storm, spotting strongest storms south of its center.

On June 10 at 08:21 UTC (4:21 a.m. EDT), when Suomi NPP passed over 02A, the Visible Infrared Imaging Radiometer Suite (VIIRS) instrument aboard captured a visible image of the storm. VIIRS collects visible and infrared imagery and global observations of land, atmosphere, cryosphere and oceans.

In the image, Tropical Storm 02A appeared slightly elongated but satellite data shows that it is consolidating and getting better organized. In the [visible image](#), the strongest, tallest [thunderstorms](#) (that were casting shadows on the lower thunderstorms) appeared to be south of the center of circulation. The image was created by the Naval Research Laboratory in Washington, D.C.

JTWC indicated that animated enhanced [infrared satellite imagery](#) on June 10 showed a slowly-consolidating low-level circulation center with deep convective banding located primarily over the southern semi-circle.

At 1500 UTC (11 a.m. EDT) on June 10, the Joint Typhoon Warning Center or JTWC stated that 02A had maximum sustained winds near 40 knots (46 mph/74 kph). It was located near 16.6 north latitude and 68.0 east longitude, about 508 nautical miles (584 miles/941 km) south of Karachi, Pakistan. 02A has tracked north-northwestward at 8 knots.

JTWC forecasters expect 02A to turn more toward west-northwest over the next couple of days. According to JTWC, 02A is expected to make hurricane status in the next couple of days before weakening on its approach to the Arabian Peninsula.

Provided by NASA's Goddard Space Flight Center

Citation: NASA-NOAA's Suomi NPP satellite spots Arabian Sea tropical cyclone (2014, June 10) retrieved 19 April 2024 from <https://phys.org/news/2014-06-nasa-noaa-suomi-npp-satellite-arabian.html>

This document is subject to copyright. Apart from any fair dealing for the purpose of private study or research, no part may be reproduced without the written permission. The content is provided for information purposes only.