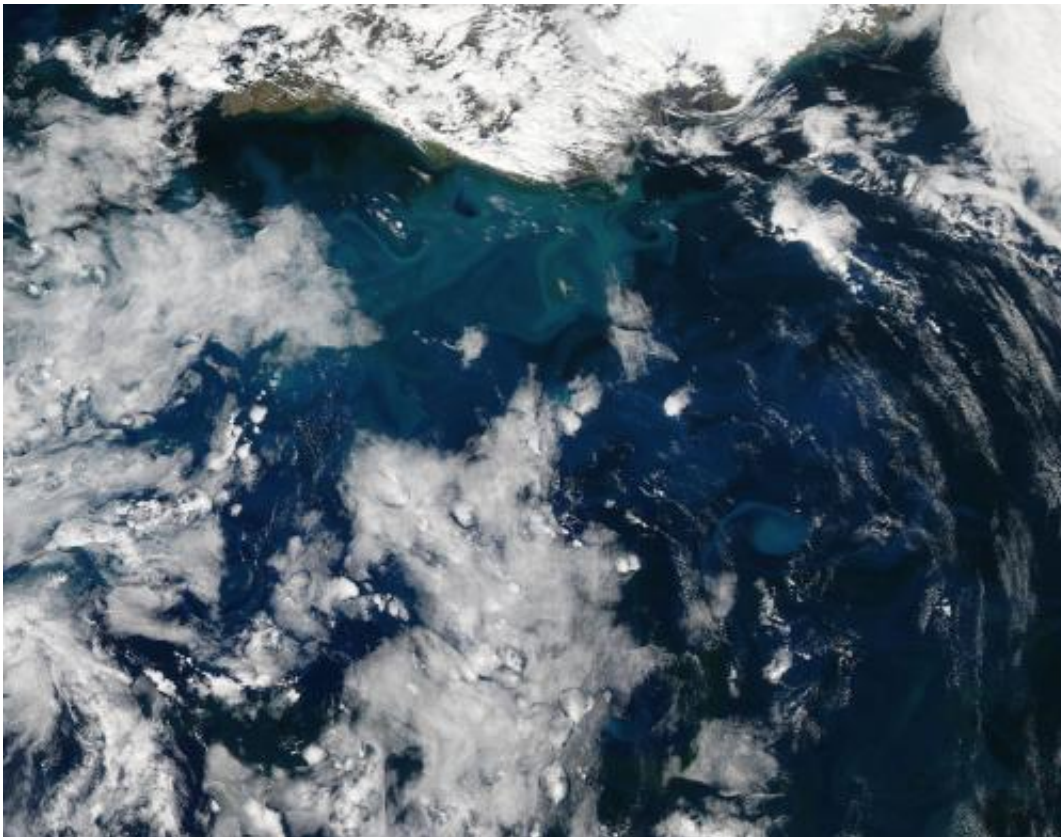


NASA image: Phytoplankton bloom off the coast of Iceland

June 23 2014



Credit: NASA/Jeff Schmaltz, MODIS Land Rapid Response Team, NASA GSFC

A spring bloom of phytoplankton lingered in the Atlantic Ocean off the coast of Iceland in early June, 2014.

The Moderate Resolution Imaging Spectroradiometer (MODIS) aboard NASA's Aqua satellite captured this true-color image on June 5. At that time, swirling jewel tones of a vast bloom were visible between banks of white clouds.

According to the Icelandic Ministry of Fisheries and Agriculture, [phytoplankton blooms](#) around Iceland usually occur in early spring and fall.

The [spring bloom](#) is driven by longer daylight and the warming of surface layers. This leads to stratification of the waters, and allows the phytoplankton to stay in the surface layer and reproduce.

By summer the huge numbers of phytoplankton in the blooms decreases nutrients, and the numbers of the organisms begins to plummet.

Provided by NASA

Citation: NASA image: Phytoplankton bloom off the coast of Iceland (2014, June 23) retrieved 7 August 2024 from <https://phys.org/news/2014-06-nasa-image-phytoplankton-bloom-coast.html>

<p>This document is subject to copyright. Apart from any fair dealing for the purpose of private study or research, no part may be reproduced without the written permission. The content is provided for information purposes only.</p>
--