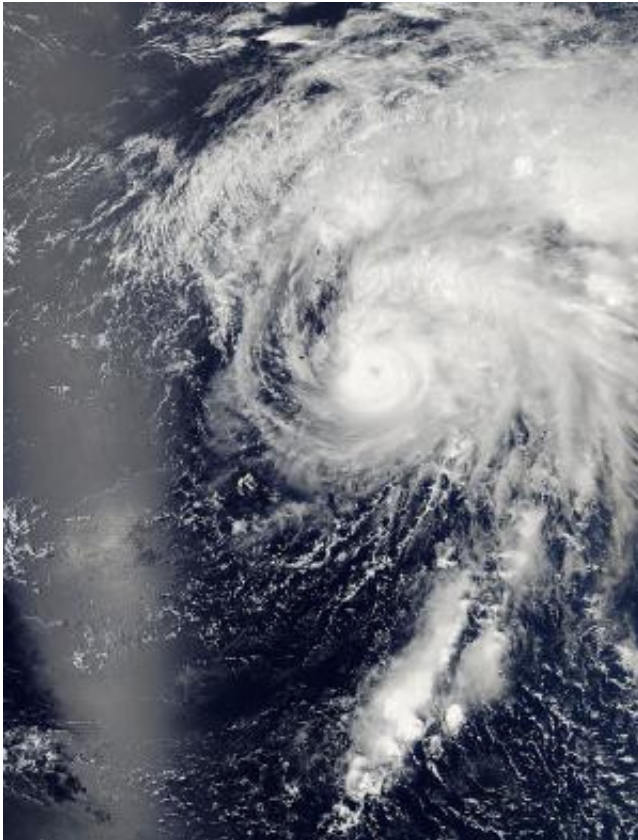


NASA image: Tapah downgrades to a depression

May 1 2014



Aqua captured this image of the tropical depression Tapah on April 29, 2014, at 11:55 p.m. EDT (3:55 UTC) in the western Pacific Ocean. Credit: NASA Goddard's MODIS Rapid Response Team

Tapah was downgraded from a tropical storm to a tropical depression and is located 239 nautical miles southeast of Iwo To.

Tapah rapidly dissipated due to the effect of strong vertical windshear from the west and a sharp decrease in [sea surface temperature](#).

The storm is currently tracking northwest at 10 knots per hour and is expected to recurve to the northeast and accelerate. Maximum wave height is currently 10 feet. The storm will be monitored for signs of regeneration.

NASA captured this image of the storm with the Moderate Resolution Imaging Spectroradiometer or MODIS instrument aboard NASA's Aqua satellite on April 29, 2014 at 11:55 p.m. EDT (3:55 UTC) in the western Pacific Ocean.

Provided by NASA's Goddard Space Flight Center

Citation: NASA image: Tapah downgrades to a depression (2014, May 1) retrieved 20 July 2024 from <https://phys.org/news/2014-05-nasa-image-tapah-downgrades-depression.html>

This document is subject to copyright. Apart from any fair dealing for the purpose of private study or research, no part may be reproduced without the written permission. The content is provided for information purposes only.