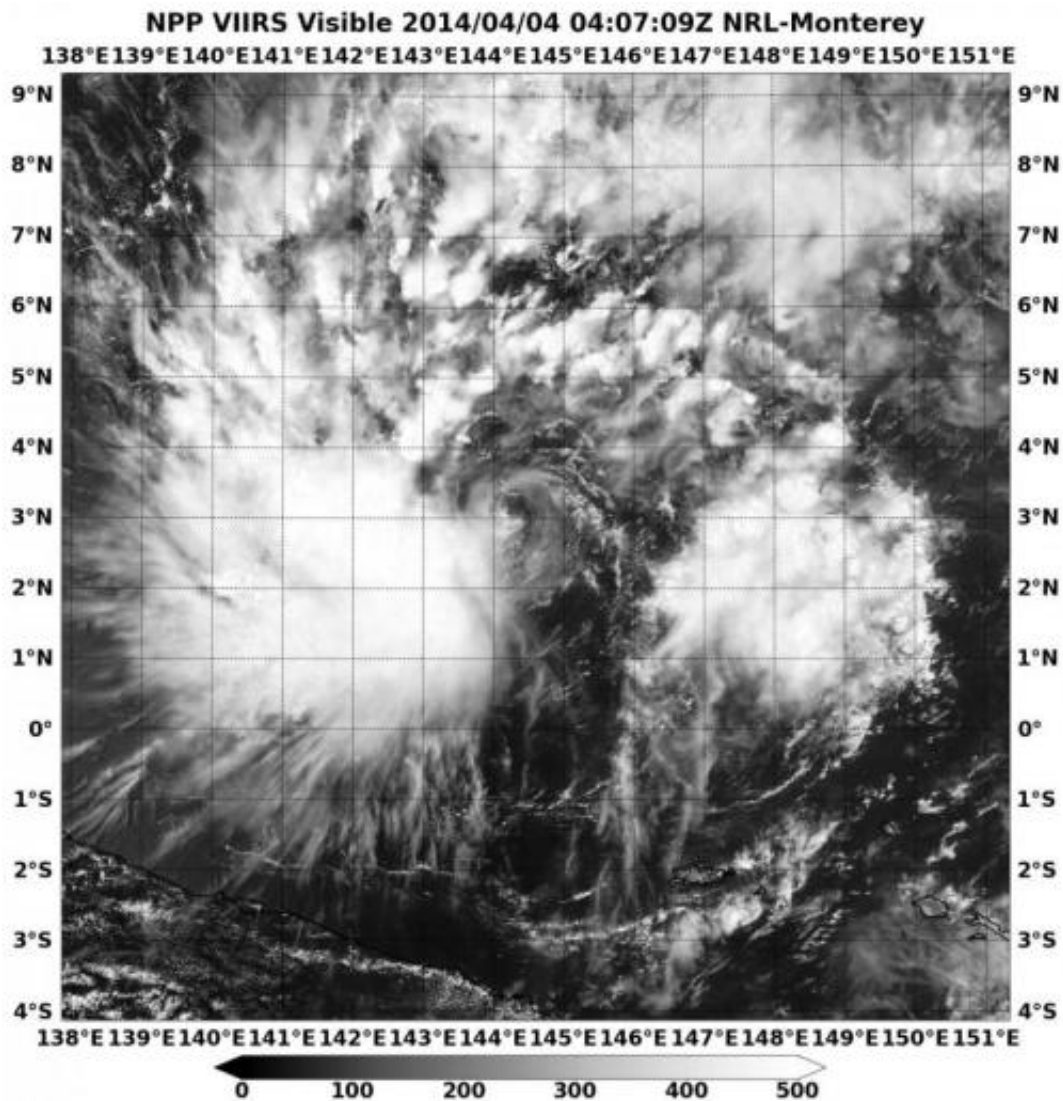


# NASA sees Tropical Depression 05W's bulk west of center

April 4 2014, by Rob Gutro



NASA-NOAA's Suomi NPP satellite passed over Tropical Depression 05W on April 4 at 07:09 UTC/3:09 a.m. EDT. Credit: NRL/NASA

NASA-NOAA's Suomi NPP satellite passed over Tropical Depression 05W on April 4 at 07:09 UTC/3:09 a.m. EDT. The VIIRS instrument captured a visible picture of the storm, revealing most of the clouds and thunderstorms were west of the center.

The Joint Typhoon Warning Center or JTWC noted that animated multispectral satellite imagery today, April 3, showed that the low-level circulation center is well-defined and that there is fragmented convective banding of thunderstorms wrapping from the north into the southwest, so most of the strongest convection and [thunderstorms](#) are on the western side of the center.

At 0900 UTC/5 a.m. EDT on April 4, Tropical Depression 05W (05W) had [maximum sustained winds](#) near 30 knots/35 mph/55 kph. It was located near 3.4 north latitude and 143.7 east longitude, about 629 nautical miles/902.2 miles/1,452 km east-southeast of Koror. The depression is moving to the west at 8 knots/10.3 mph/16.6 kph.

JTWC forecasters noted that 05W is forecast to track in a northwesterly direction through waters with high ocean heat content, so the storm is expected to strengthen into a [tropical storm](#) by April 5.

Provided by NASA's Goddard Space Flight Center

Citation: NASA sees Tropical Depression 05W's bulk west of center (2014, April 4) retrieved 24 April 2024 from <https://phys.org/news/2014-04-nasa-tropical-depression-05w-bulk.html>

<p>This document is subject to copyright. Apart from any fair dealing for the purpose of private study or research, no part may be reproduced without the written permission. The content is provided for information purposes only.</p>
--