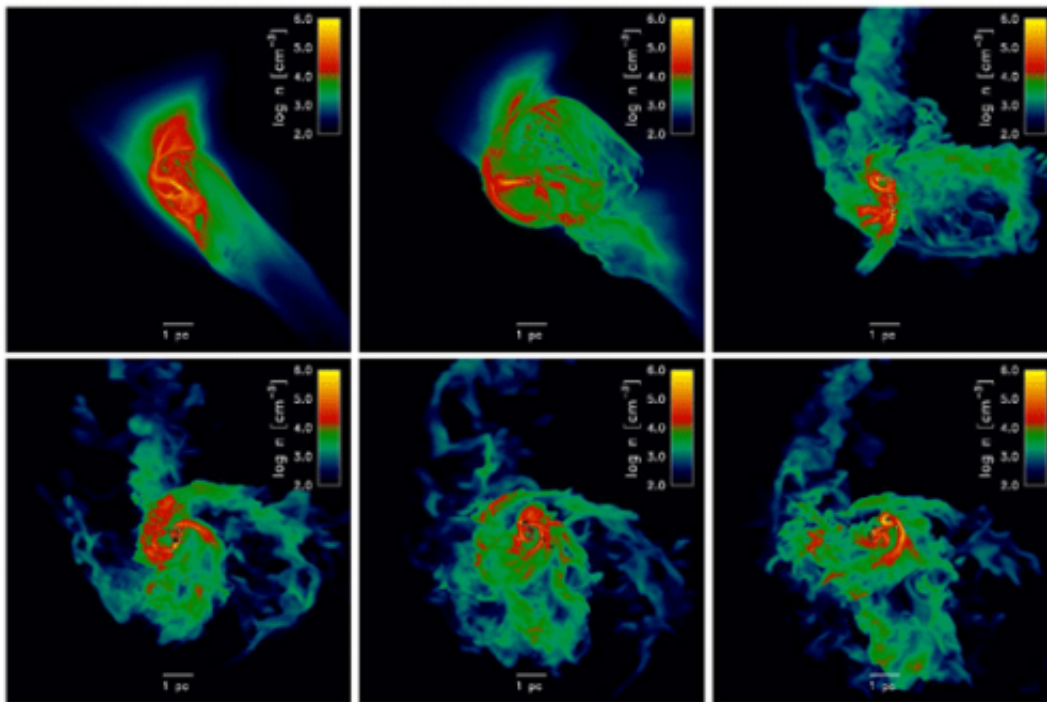


# Supercomputer simulations shed light on formation, explosion of stars in earliest galaxies

February 5 2014, by Aaron Dubrow



This simulation shows hydrodynamic instability triggered by rapid cooling in a heavy-element-enriched cosmic dark matter halo when the universe was only 300 million years old. The instability drives turbulence which breaks the flow into fragments. Some fragments undergo gravitational collapse and set to fragment into progressively smaller units. From left to right and top to bottom, the six panels show projections of gas density, and the horizontal bar has length 1 pc = 3.26 light years. Credit: Chalence Safranek-Shrader, Milos Milosavljevic, and Volker Bromm, The University of Texas at Austin

*Ab initio*: "From the beginning." It's a term used in science to describe calculations that rely on established mathematical laws of nature, or "first principles," without additional assumptions or special models. But when it comes to the phenomena that Milos Milosavljevic is interested in calculating, we're talking really *ab initio*, as in from the beginning of time onward.

Things were different in the early eons of the universe. The cosmos experienced rapid inflation; electrons and protons floated free from each other; the universe transitioned from complete darkness to light; and enormous stars formed and exploded to start a cascade of events leading to our present-day universe.

Working with Chalence Safranek-Shrader and Volker Bromm at The University of Texas at Austin, Milosavljevic recently reported the results of several massive numerical simulations charting the forces of the universe in its first hundreds of millions of years using some of the world's most powerful supercomputers, including the National Science Foundation-supported Stampede, Lonestar and Ranger (now retired) systems at the Texas Advanced Computing Center.

The results, described in the *Monthly Notices of the Royal Astronomical Society* in January 2014, refine how the first [galaxies](#) formed, and in particular, how metals in the stellar nurseries influenced the characteristics of the stars in the first galaxies.

"The universe formed at first with just hydrogen and helium," Milosavljevic said. "But then the very first stars cooked metals and after those stars exploded, the metals were dispersed into ambient space."

Eventually the ejected metals fell back into the gravitational fields of the dark matter haloes, where they formed the second generation of stars. However, the first generation of metals ejected from supernovae did not

mix in space uniformly.

"It's as if you have coffee and cream but you don't stir it, and you don't wait for a long enough time," he explained. "You would drink some cream and coffee but not coffee with cream. There will be thin sheets of coffee and cream."

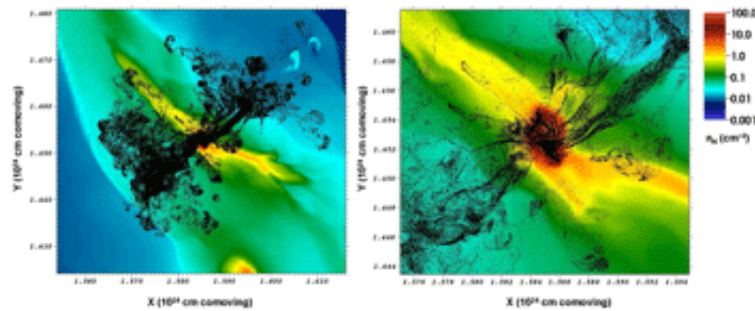
According to Milosavljevic, subtle effects like these governed the evolution of early galaxies. Some stars formed that were rich in metals, while others were metal-poor. Generally there was a spread in stellar chemical abundances because of the incomplete mixing.

Another factor that influenced the evolution of galaxies was how the heavier elements emerged from the originating blast. Instead of the neat spherical blast wave that researchers presumed before, the ejection of metals from a supernova was most likely a messy process with blobs of shrapnel shooting in every direction.

"Modeling these blobs properly is very important for understanding where metals ultimately go," Milosavljevic said.

## **Predicting future observations**

In astronomical terms, early in the universe translates to very far away. Those fugitive first galaxies are unbelievably distant from us now, if they haven't been incorporated into more recently-formed galaxies already. But many believe the early galaxies lie at a distance that we will be able to observe with the James Webb Space Telescope (JWST), set to launch in 2018. This makes Milosavljevic and his team's cosmological simulations timely.



This simulation shows heavy-element-bearing sheets of an exploding star's debris streaming into the center of a cosmic dark matter halo. Upon arriving in the center, the streams will enable the formation of the first low-mass stars, when the universe was still only about 200 million years old. Credit: Jeremy Ritter, Milos Milosavljevic, and Volker Bromm, The University of Texas at Austin

"Should the James Webb Space Telescope integrate the image in one spot for a long time or should it mosaic its survey to look at a larger area?" Milosavljevic asked. "We want to recommend strategies for the JWST."

Telescopes on the ground will perform follow-up studies of the phenomena that JWST detects. But to do so, scientists need to know how to interpret JWST's observations and develop a protocol for following up with ground-based telescopes.

Milosavljevic and others' cosmological simulations will help determine where the Space Telescope will look, what it will look for, and what to do once a given signal is observed.

Distant objects, born at a given moment in cosmic history, have a tell-tale signature—spectra or light curves. Like isotopes in carbon dating, these signatures help astronomers recognize and date phenomenon in deep space. In the absence of any observations, simulations are the best

way of predicting these light signatures.

"We are anticipating observations until they become available in the future," Milosavljevic said.

If done correctly, such simulations can mimic the dynamics of the universe over billions of years, and emerge with results that look something like what we see—or hope to see with new farther-reaching telescopes.

"This is a really exciting time for the field of cosmology," astronomer and Nobel Laureate Saul Perlmutter said in his keynote address at the Supercomputing '13 conference in November. "We are now ready to collect, simulate and analyze the next level of precision data... there's more to high performance computing science than we have yet accomplished."

## **Understanding our place in the universe**

In addition to the practical goals of guiding the James Webb Space Telescope, the effort to understand these very early stars in the first galaxies has another function: to help tell the story of how our solar system came to be.

The current state of the universe is determined by the violent evolutions of the generations of stars that came before. Each generation of stars (or "population," in astronomy terms) has its own characteristics, based on the environment it was created in.

The Population III stars, the earliest that formed, are thought to have been massive and gaseous, consisting initially of hydrogen and helium. These stars ultimately collapsed and seeded new, smaller, stars that clustered into the first galaxies. These in turn exploded again, creating

the conditions of Population I stars like our own, chock full of materials that enable life. How stars and galaxies evolved from one stage to another is still a much-debated question.

"All of this was happening when the universe was very young, only a few hundred million years old," Milosavljevic said. "And to make things more difficult, [stars](#)—like people—change. Every hundred million years, every 10 million years—it's like a kid growing up, all the time something new is happening."

Simulating the universe from birth to its current age, Milosavljevic and his team's investigations help disentangle how galaxies changed over time, and provide a better sense of what came before us and how we came to be.

Said Nigel Sharp, program director in the Division of Astronomical Sciences at the National Science Foundation: "These are novel studies using methods often ignored by other efforts, but of great importance as they impact so much of what happens in later cosmology and galaxy studies."

**More information:** Paper: [mnras.oxfordjournals.org/content/476/1/mnras.stt2307.abstract](https://mnras.oxfordjournals.org/content/476/1/mnras.stt2307.abstract)

Provided by University of Texas at Austin

Citation: Supercomputer simulations shed light on formation, explosion of stars in earliest galaxies (2014, February 5) retrieved 26 April 2024 from <https://phys.org/news/2014-02-supercomputer-simulations-formation-explosion-stars.html>

This document is subject to copyright. Apart from any fair dealing for the purpose of private
---

study or research, no part may be reproduced without the written permission. The content is provided for information purposes only.