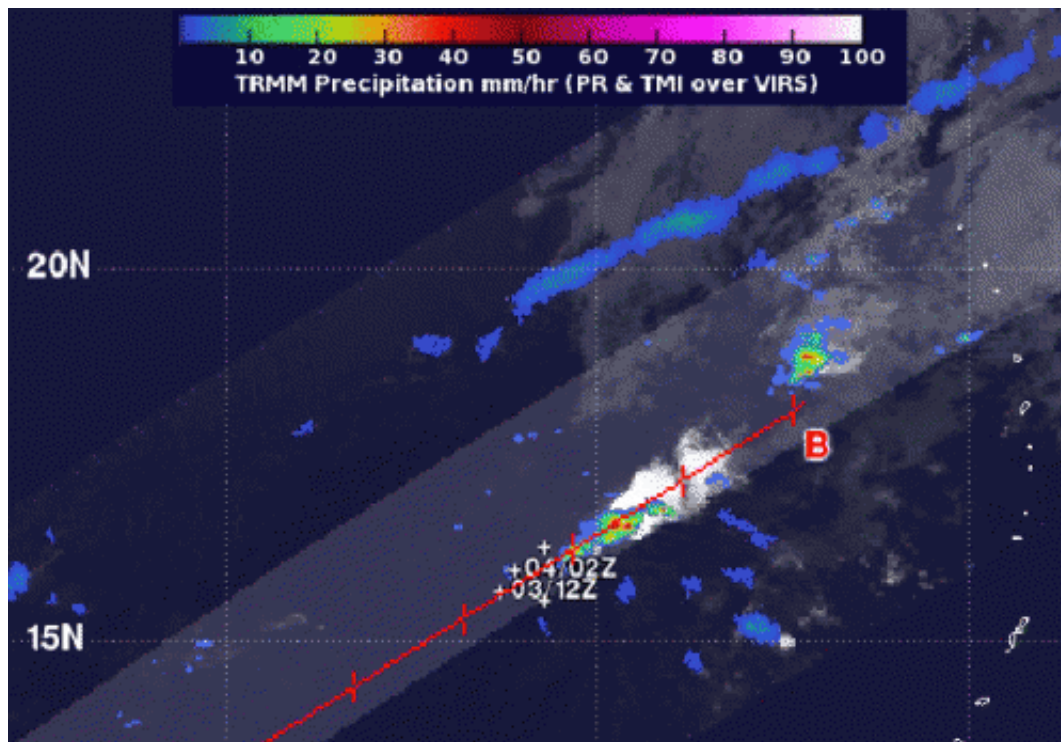


NASA sees rainfall quickly fade in dying Depression 33W

December 4 2013, by Rob Gutro



NASA's TRMM satellite captured this image of Tropical Depression 33W's sparse rainfall on Dec. 4 at 1045 UTC. There were two isolated areas of heavy (red) rainfall. Credit: NASA/SSAI, Hal Pierce

NASA's TRMM satellite noticed that rainfall became scarce in the Northwestern Pacific Ocean's thirty-third tropical depression in its second day of life. Tropical Depression 33W or TD 33W had weakened and TRMM showed only two isolated areas of heavy rainfall in the

fragmented system.

At 0300 UTC on December 4/10 p.m. EST December 3, the Joint Typhoon Warning Center had already issued its final advisory on TD 33W. At that time, TD 33W's maximum sustained winds had already diminished to 25 knots/28.7 mph/46.3 kph. The center of the disorganized depression was located near 15.5 north and 139.1 east, about 354 nautical miles west-northwest of Andersen Air Force Base, Guam. It was moving to the southeast at 4 knots/4.6 mph/7.4 kph.

NASA's Tropical Rainfall Measuring Mission satellite known as TRMM measured the rainfall rates occurring within TD 33W on December 4 at 1045 UTC/5:45 a.m. EST. Two isolated areas within the circulation of the depression revealed [heavy rainfall](#) where rain was falling at 2 inches/50 mm per hour. The remaining rainfall in the system was scattered and light, but no rainfall around the center of circulation. Multispectral satellite imagery showed that the low-level circulation center was exposed to outside winds.

Vertical wind shear has literally taken the wind out of the depression. Wind shear increased to more than 30 knots/34.5 mph/55.5 kph and was pounding the depression. TD 33W is expected to move to the northeast and dissipate over the next day.

Provided by NASA's Goddard Space Flight Center

Citation: NASA sees rainfall quickly fade in dying Depression 33W (2013, December 4) retrieved 22 May 2024 from <https://phys.org/news/2013-12-nasa-rainfall-quickly-dying-depression.html>

This document is subject to copyright. Apart from any fair dealing for the purpose of private study or research, no part may be reproduced without the written permission. The content is provided for information purposes only.
