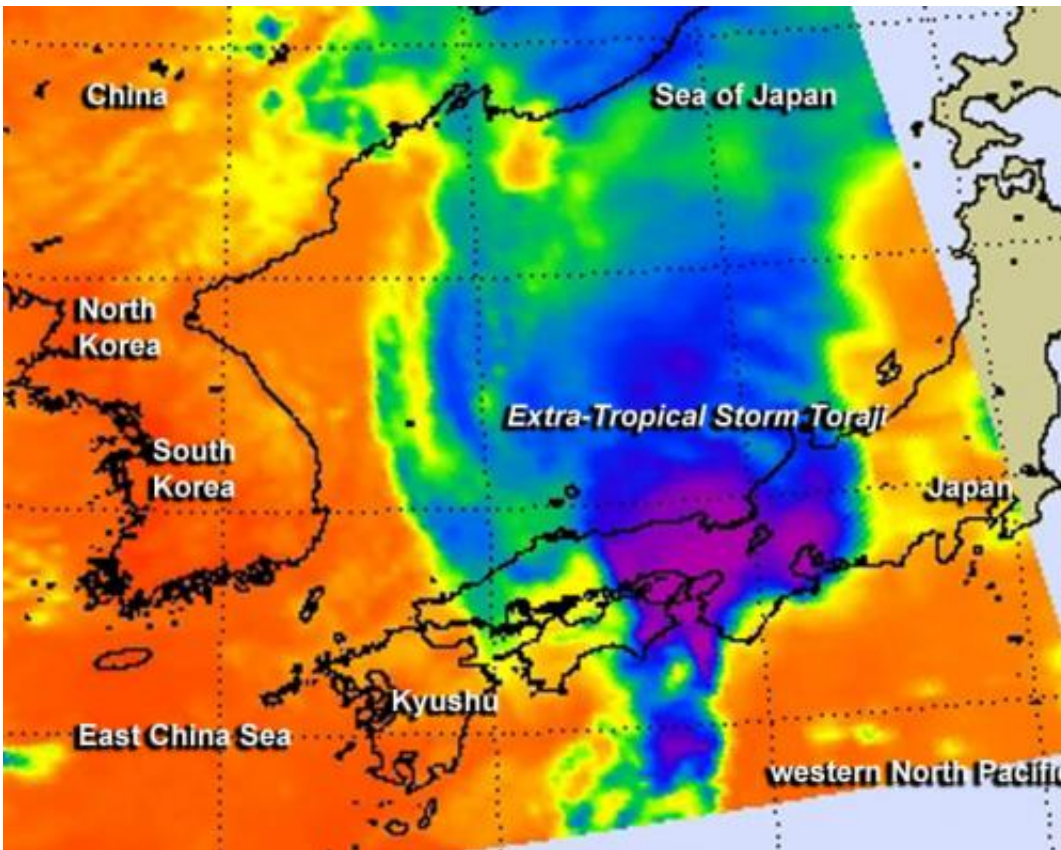


Infrared NASA image sees Extra-Tropical Toraji over Japan

September 4 2013



NASA's AIRS instrument data took this infrared image of Tropical Storm Toraji as it continued tracking through southern Japan on Sept. 4 at 0429 UTC. Purple indicate coldest cloud top temperatures and strongest thunderstorms with heaviest rainfall. Credit: NASA JPL/Ed Olsen

Tropical Storm Toraji passed over Kyushu and transitioned into an extra-

tropical storm while bringing heavy rainfall over the big island of Japan when NASA's Aqua satellite passed overhead on Sept. 4. The extra-tropical storm is now a cold-core system being carried by a frontal system.

The Atmospheric Infrared Sounder or AIRS instrument captured [infrared data](#) of Extra-Tropical Storm Toraji as it continued tracking through southern Japan on Sept. 4 at 0429 UTC/12:29 a.m. EDT. AIRS showed that the coldest cloud top temperatures and strongest thunderstorms with heaviest rainfall stretched from Hyogo Prefecture in the southwest to Shiga Prefecture to Gifu Prefecture in the northeast.

At 1500 UTC/11 a.m. EDT on Sept. 4, Toraji had [maximum sustained winds](#) near 40 knots/46 mph/74 kph. It was centered near 32.7 north and 132.9 east, about 114 nautical miles/131 miles/211 km south of Iwakuni, Japan. Toraji has increased in forward speed over the last day and was moving to the northeast at 22 knots/25.3 mph/40.7 kph.

The Joint Typhoon Warning Center's multi-level analyses indicated that Toraji is now an extra-tropical cold-core low pressure area, and it is linked to a fast moving frontal boundary. That frontal system is moving across Japan and will carry Toraji's energy with it.

Provided by NASA's Goddard Space Flight Center

Citation: Infrared NASA image sees Extra-Tropical Toraji over Japan (2013, September 4) retrieved 20 March 2024 from <https://phys.org/news/2013-09-infrared-nasa-image-extra-tropical-toraji.html>

<p>This document is subject to copyright. Apart from any fair dealing for the purpose of private study or research, no part may be reproduced without the written permission. The content is provided for information purposes only.</p>
--