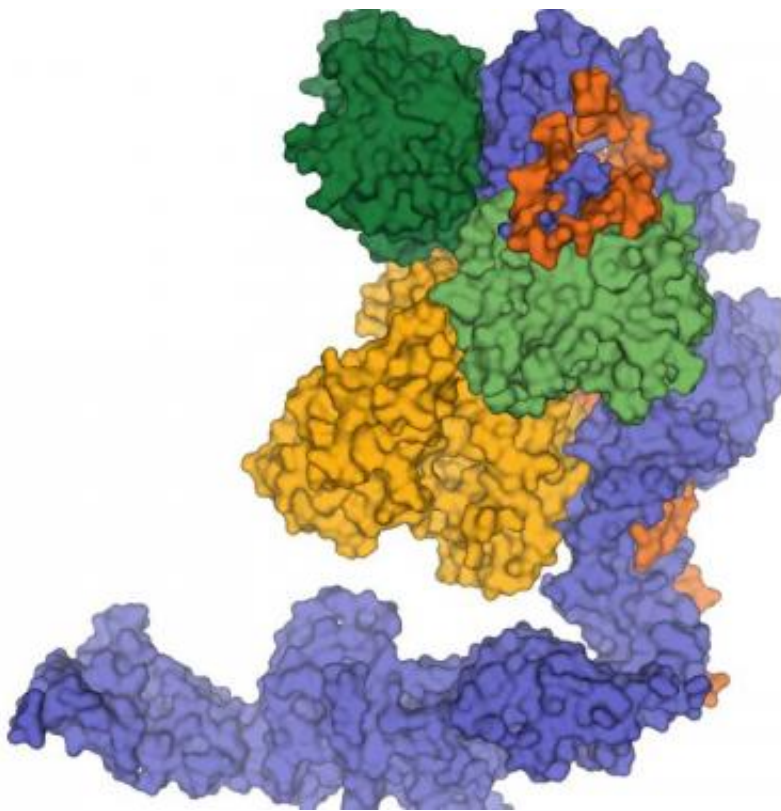


Feeding RNAs to a molecular shredder: Scientists unravel the structure of a regulatory protein complex in RNA disposal

August 16 2013



The ski complex plays an important role in the quality management of the cell.
Credit: Felix Halbach © MPI of Biochemistry

Much in the same way as we use shredders to destroy documents that are no longer useful or that contain potentially damaging information, cells

use molecular machines to degrade unwanted or defective macromolecules. Scientists of the Max Planck Institute (MPI) of Biochemistry in Martinsried near Munich, Germany, have now decoded the structure of a protein complex (Ski complex) which plays an essential role in the process of degrading ribonucleic acids (RNAs). RNAs are ubiquitous and abundant molecules with multiple functions in the cell, such as allowing the translation of the genomic information into proteins. "The Ski complex we investigated feeds RNA molecules to the degradation machinery," says Felix Halbach, scientist at the MPI of Biochemistry. The study has now been published in the journal *Cell*.

Any errors that occur during the synthesis of RNA molecules or unwanted accumulation of RNAs can be harmful for the cell. The elimination of defective RNAs or of RNAs that are no longer needed is therefore a key step in the metabolism of a cell. This task is carried out by a protein complex called Exosome, one of the research objects in the department "Structural Cell Biology" headed by Elena Conti. The [molecular mechanism](#) of how the Exosome is regulated, however, is not very clear yet.

The Max Planck scientists have now elucidated the [atomic structure](#) and the operating mechanism of a protein complex (Ski complex) which is involved in the activation of the cytoplasmic Exosome. The Ski complex contains several subunits and can be found in all eukaryotes – from yeast to humans. "We could show that the Ski complex and the Exosome interact directly and that they jointly form a channel for the RNA which is supposed to be degraded," says Felix Halbach. Like DNA, RNA molecules are often folded. To be degraded by the Exosome, RNA molecules have to be unfolded first – this task is executed by the Ski complex. The unfolded RNA molecules can then be guided through the joint channel to the Exosome. "The Ski complex feeds RNA molecules to the Exosome," explains the biochemist.

The results also reveal additional parallels between the Exosome and the Proteasome. The Proteasome is the protein complex responsible for the degradation of proteins in a cell. "It becomes clear that these two complexes are not only structurally and functionally similar," says Elena Conti, "also their regulatory subunits work in a similar manner." They unwind RNA molecules or, respectively, proteins and guide them to the active centers of the specific degradation machinery.

More information: Halbach, F., et al. The yeast Ski complex: Crystal structure and substrate channeling to the RNA exosome, *Cell*, August 15, 2013. DOI: 10.1016/j.cell.2013.07.017

Provided by Max Planck Society

Citation: Feeding RNAs to a molecular shredder: Scientists unravel the structure of a regulatory protein complex in RNA disposal (2013, August 16) retrieved 26 April 2024 from <https://phys.org/news/2013-08-rnas-molecular-shredder-scientists-unravel.html>

This document is subject to copyright. Apart from any fair dealing for the purpose of private study or research, no part may be reproduced without the written permission. The content is provided for information purposes only.