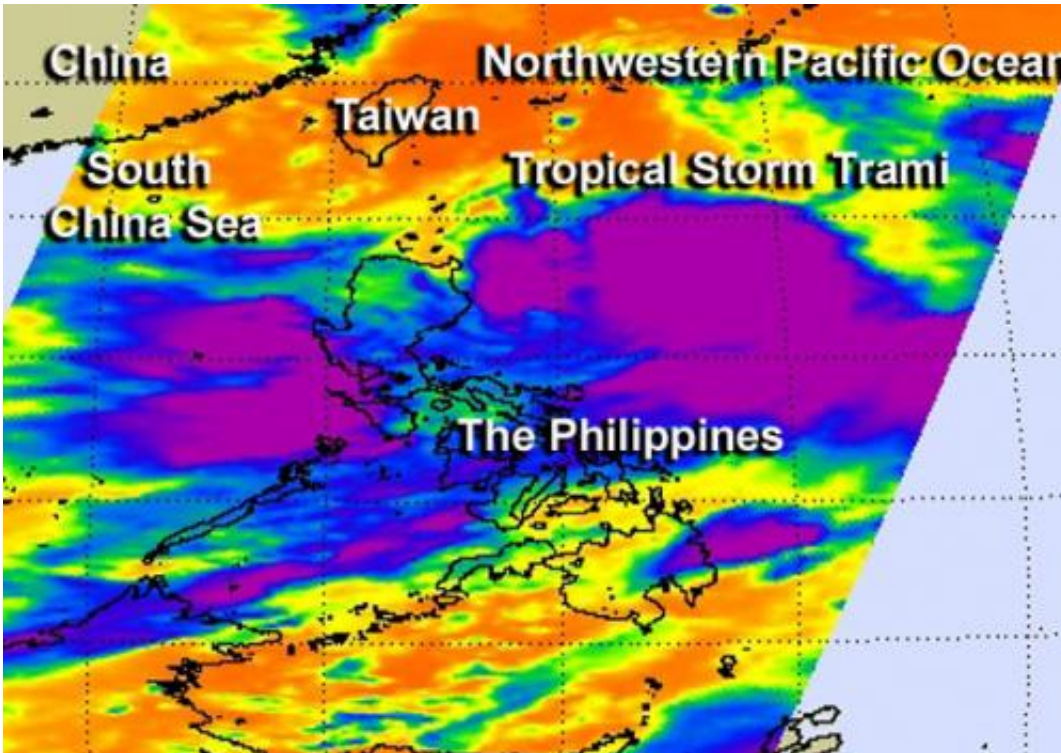


NASA sees Tropical Storm Trami U-turning

August 19 2013



NASA's AIRS passed over Tropical Storm Trami on Aug. 18 it looked at the storm in an infrared light and saw coldest cloud top temperatures and strong thunderstorms (purple) around the center and in a band of thunderstorms south of the center. Credit: NASA JPL/Ed Olsen

Tropical Storm Trami appears to be a very large storm in infrared data from NASA's Aqua satellite. In a NASA image, Trami appears to be about two-thirds the size of the Philippines. Satellite data also indicates that the massive storm is now making a U-turn in the Northwestern

Pacific Ocean, from a southeastern path to a northwestern path.

When NASA's Aqua satellite passed over Tropical Storm Trami on Aug. 18, the AIRS instrument aboard captured an infrared image that showed a large area of [thunderstorm activity](#) within the storm. The Aqua satellite passed over Trami at 17:29 UTC/1:29 p.m. EDT on Aug. 18. Aqua's Atmospheric Infrared Sounder instrument looked at the storm in an infrared light. The infrared data showed the coldest cloud top temperatures circled the center of the storm and were in a strong band of thunderstorms wrapping into the center from the southwest. Trami continued to show the same organization on Aug. 19.

Multispectral [satellite imagery](#) on Aug. 19 revealed that the low-level center has been consolidating. Whenever a storm consolidates, it typically means that it can spin faster and winds increase. Data from Defense Meteorological Satellite Program polar [orbiting satellites](#) showed a near-complete eye-wall, and confirmed the strong band of thunderstorms over Trami's southern semi-circle.

At 1500 UTC/11 a.m. EDT, Tropical Storm Trami was located about 391 nautical miles south of Kadena Air Base near 20.3 north and 128.4 west. Trami was moving slowly to the northeast at 4 knots/4.6 mph/7.4 kph. Maximum sustained winds were near 50 knots/57.5 mph/92.6 kph.

Trami is expected to cross northern Taiwan as a typhoon on Aug. 21 before making a final landfall in southeastern China.

Provided by NASA's Goddard Space Flight Center

Citation: NASA sees Tropical Storm Trami U-turning (2013, August 19) retrieved 9 April 2024 from <https://phys.org/news/2013-08-nasa-tropical-storm-trami-u-turning.html>

This document is subject to copyright. Apart from any fair dealing for the purpose of private study or research, no part may be reproduced without the written permission. The content is provided for information purposes only.