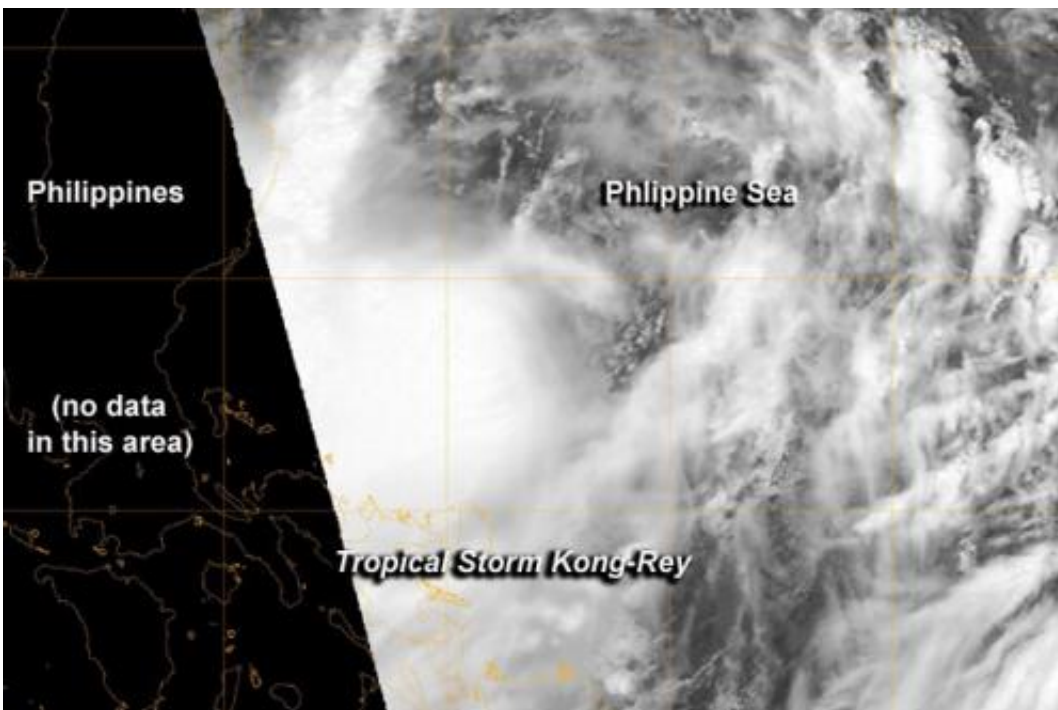


NASA catches Tropical Storm Kong-Rey form in northwestern Pacific

August 26 2013



On Aug. 26 at 0432 UTC/12:32 a.m. EDT, NASA's Aqua satellite passed over the eastern half of newborn Tropical Storm Kong-Rey. Credit: NRL/NASA

The northwestern Pacific has generated its fourteenth tropical cyclone and NASA's Aqua satellite flew over the eastern side of the storm early on Aug. 26.

Tropical Storm Kong-Rey formed from low pressure System 91W. It is

located east of the northeast Philippines and bringing the region gusty winds, rains and rough seas today, Aug 26.

Aqua passed over Tropical Storm Kong-Rey on Aug. 26 at 0432 UTC/12:32 a.m. EDT as it was strengthening from a tropical depression into a tropical storm. The Moderate Resolution Imaging Spectroradiometer or MODIS instrument aboard Aqua captured a [visible image](#) of Kong-Rey that showed a rounded circulation.

Although MODIS did not capture any data over the Philippines, Kong-Rey is far enough east of the island nation that most of the storm was in its sights.

A tropical cyclone is made up of hundreds of thunderstorms and the MODIS imagery showed strong thunderstorms around the center of circulation that were casting shadows on the lower surrounding thunderstorms.

Satellite imagery also revealed banding of thunderstorms was beginning to occur.

On Aug. 25 at 1500 UTC/11 a.m. EDT Kong-Rey's [maximum sustained winds](#) were near 35 knots/40 mph/55 kph. The storm was centered near 17.7 north and 123.9 east, about 241 nautical miles northeastward of Manila, Philippines, has tracked northwestward at 12 knots/13.8 mph/22.2 kph. Tropical Storm Kong-Rey was bringing rainfall to eastern Luzon.

The forecast along the eastern seaboard of Central and Southern Luzon for Aug. 26 calls for cloudy skies with scattered to widespread [rain showers](#) and thunderstorms. According to PAGASA, the Philippine Atmospheric and Astronomical Services Administration, winds in that area area expected to be sustained between 32 and 39 mph/52 and 63

kph/28 to 34 knots/ and seas are expected to be very rough as Kong-Rey continues moving past the northern Philippines.

Kong-Rey is forecast to move northwest and move past Luzon and pass to the east of Taiwan on its northern journey.

Provided by NASA's Goddard Space Flight Center

Citation: NASA catches Tropical Storm Kong-Rey form in northwestern Pacific (2013, August 26) retrieved 2 May 2024 from <https://phys.org/news/2013-08-nasa-tropical-storm-kong-rey-northwestern.html>

This document is subject to copyright. Apart from any fair dealing for the purpose of private study or research, no part may be reproduced without the written permission. The content is provided for information purposes only.