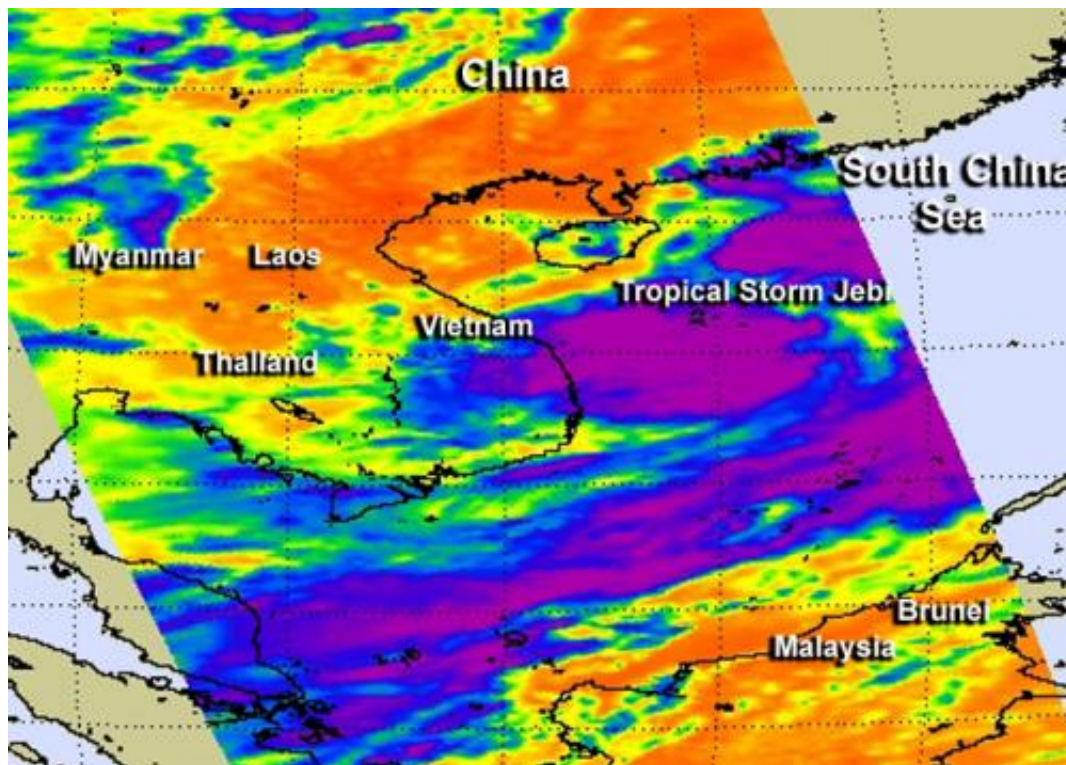


NASA looks at Tropical Storm Jebi in South China Sea

August 2 2013



The AIRS instrument aboard NASA's Aqua satellite captured this infrared image of Tropical Storm Jebi on Aug. 1 at 6:11 a.m. EDT. Strongest storms and heaviest rains appear around southwest of the center where cloud top temperatures exceed $-63^{\circ}\text{F}/-52^{\circ}\text{C}$ (purple). Credit: NASA JPL/Ed Olsen

Tropical Storm Jebi developed on July 31 and NASA satellite data on Aug. 1 shows the storm filling up at least half of the South China Sea.

The Atmospheric Infrared Sounder or AIRS instrument aboard NASA's Aqua satellite captured an [infrared image](#) of Tropical Storm Jebi on August 1 at 6:11 UTC or 2:11 a.m. EDT when it passed overhead from space. Strongest storms and heaviest rains appeared south of the center and in a large band of thunderstorms wrapping into the center from the southwest. Additionally, fragmented bands of thunderstorms are also east of the center of the system.

AIRS showed that thunderstorms in the band of thunderstorms southwest of the center had cloud top temperatures that exceeded -63F/-52, indicating heavy rainfall. Infrared data also showed the stronger winds were displaced over the periphery of the storm.

The Joint Typhoon Warning Center noted that the low-level circulation center is consolidating as deep central convection is quickly developing.

At 1500 UTC/11 a.m. EDT on Aug. 1, Tropical Storm Jebi had [maximum sustained winds](#) near 40 knots/46 mph/74 kph. It was located near 17.0 north and 112.8 east, about 483 nautical miles east-southeast of Hanoi, Vietnam, but its [cloud cover](#) fills up a good deal of the South China Sea. Jebi is moving to the northwest at 7 knots/8 mph/13 kph.

The Joint Typhoon Warning Center expects Jebi to strengthen slightly before moving over Hainan Island, China, move through the Gulf of Tonkin, and make a final landfall over northern Vietnam within the next two days.

Provided by NASA's Goddard Space Flight Center

Citation: NASA looks at Tropical Storm Jebi in South China Sea (2013, August 2) retrieved 26 April 2024 from <https://phys.org/news/2013-08-nasa-tropical-storm-jebi-south.html>

This document is subject to copyright. Apart from any fair dealing for the purpose of private study or research, no part may be reproduced without the written permission. The content is provided for information purposes only.