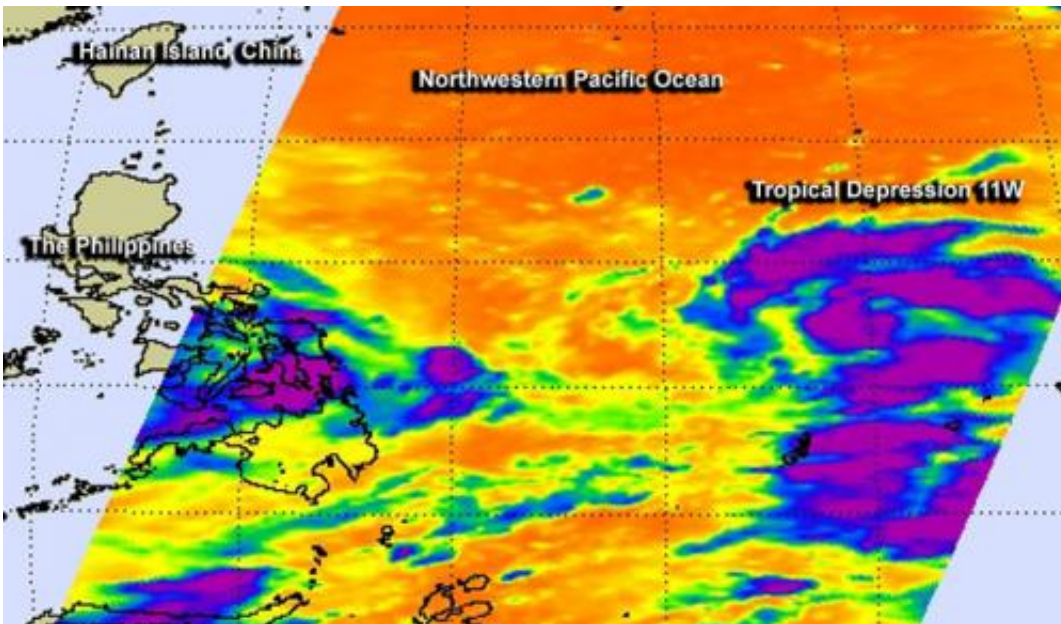


NASA sees some strength in developing Tropical Depression 11W headed for Luzon

August 9 2013



This infrared image from NASA's Aqua satellite on Aug. 8 showed some cloud top temperatures in bands of thunderstorms and around the center of Tropical Depression 11W are as cold as $-63^{\circ}\text{F}/-52^{\circ}\text{C}$ (purple) indicating strong storms.

Credit: NASA/JPL

Tropical Depression 11W formed in the western North Pacific Ocean and appears to be tracking toward Luzon, in the Northern Philippines. NASA's Aqua satellite captured an infrared image of the tropical depression as it continues to organize and strengthen.

On Aug. 8 at 1853 UTC (2:53 p.m. EDT) NASA's Atmospheric Infrared Sounder or AIRS instrument that flies aboard NASA's Aqua satellite showed some cloud top temperatures in bands of thunderstorms and around the center of Tropical Depression 11W were as cold as -63F/-52C, indicating strong storms.

What does Infrared Data Show?

AIRS infrared images are false-colored to show temperature differences. Scientists look at cloud top temperatures to understand how high the thunderstorms are that make up a tropical cyclone - and there are hundreds of thunderstorms that make up one storm. The colder the cloud top temperature, the higher the top of the thunderstorm reaches into the troposphere and the stronger the storm. NASA research has indicated that cloud top temperatures that reach or exceed the threshold of -63F/-52C typically have heavy rainfall rates.

On Aug. 9 at 1200 UTC (8 a.m. EDT), Tropical Depression 11W's [maximum sustained winds](#) near 30 knots/34.5 mph/55.5 kph. 11W's center was located about 671 nautical miles/ 772.2 miles/1,243 km east of Manila, Philippines, near 14.0 north and 132.0 east. 11W is moving west at 10 knots/11.5 mph/18.5 kph. When 11W strengthens into a tropical storm, it will be renamed Tropical Storm Utor.

Forecasters at the Joint Typhoon Warning Center have forecast Tropical Depression 11W's path. After crossing Luzon on Aug. 11 as a tropical storm, 11W is expected to become a typhoon as it moves through the South China Sea on Aug. 12 and 13 before making a landfall in southern China.

Provided by NASA's Goddard Space Flight Center

Citation: NASA sees some strength in developing Tropical Depression 11W headed for Luzon (2013, August 9) retrieved 2 April 2023 from <https://phys.org/news/2013-08-nasa-strength-tropical-depression-11w.html>

This document is subject to copyright. Apart from any fair dealing for the purpose of private study or research, no part may be reproduced without the written permission. The content is provided for information purposes only.