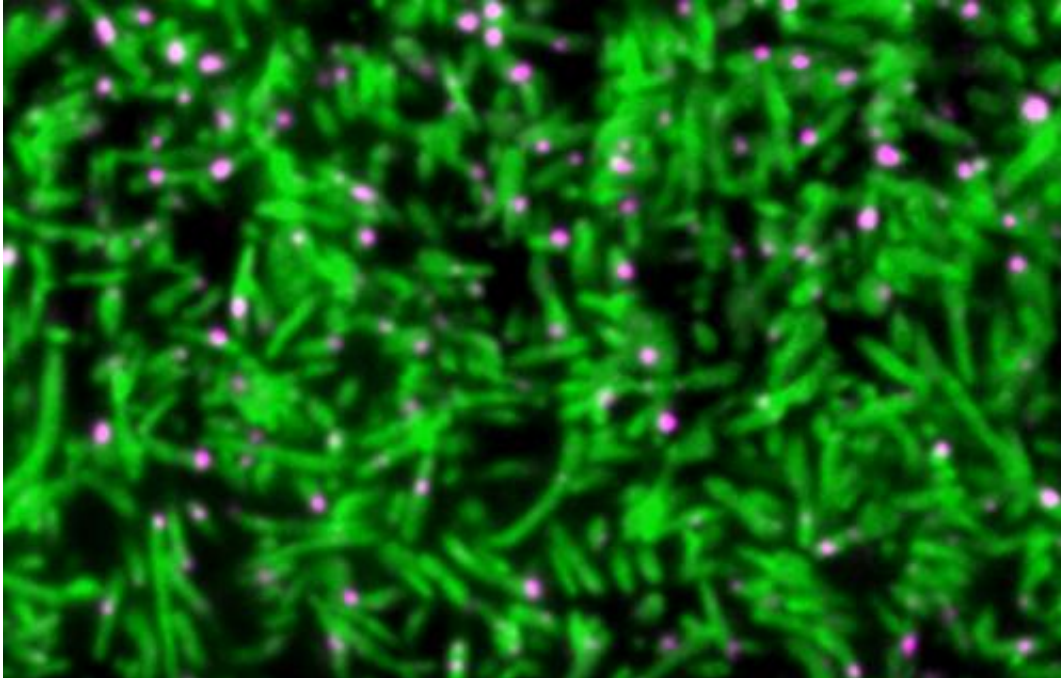


# Cells eat themselves into shape

August 9 2013

---



A fruit fly embryo's cells "eat up" the finger-like tendrils (green) on their surface to smooth it out. Credit: EMBL/A.Necakov

The process cells use to 'swallow' up nutrients, hormones and other signals from their environment – called endocytosis – can play a crucial role in shaping the cells themselves, scientists at the European Molecular Biology Laboratory (EMBL) in Heidelberg, Germany, have found. The study, published today in *Nature Communications*, could help explain how the cells on your skin become different from those that line your stomach or intestine.

"We're the first to show that endocytosis really drives changes in [cell shape](#) by directly remodelling the [cell membrane](#)," says Stefano De Renzis, who led the work.

De Renzis and colleagues made the discovery by studying the fruit fly *Drosophila*, which starts life as a sac. The fly's embryo is initially a single large cell, inside which nuclei divide and divide, until, at three hours old, the cell membrane moves in to surround each nucleus, so that in about an hour the embryo goes from one to 6000 cells. As this happens, cells change shape. The cell membrane starts off with lots of finger-like tendrils sticking out of the embryo, and in about 10 minutes it smoothes down to a [flat surface](#), like a rubber glove transforming into a round balloon.

The EMBL scientists found that, for this quick shape-shift to happen, the cells 'eat up' their finger-like offshoots. And, to quickly take up all that excess membrane, cells adapt their 'feeding strategy'. Instead of bending a little pouch of membrane inwards and eventually detaching it into the cell as a round pod, or vesicle, the fruit fly embryo's cells suck in long tubes of membrane. Once inside the cell, those tubes are then processed into smaller vesicles.

The findings, which include uncovering one of the key molecules involved, provide a new way of thinking about how cells take on the shape required to perform different tasks – and not only in [fruit flies](#).

"This outward-facing – or apical – surface is the main difference between different kinds of epithelial cell," says De Renzis. "The cells on your skin are smooth, but the ones lining your [intestine](#) have lots of 'fingers' like our fly [embryos](#), and we know for instance that some bowel diseases involve problems in those 'fingers'."

For this work, Piotr Fabrowski in De Renzis' lab developed a new

strategy for imaging the fruit fly embryo and Aleksandar Necakov, a joint post-doctoral fellow in the De Renzis and John Briggs labs at EMBL, combined light and electron microscopy to see how different the swallowed membrane tubes are from the vesicles usually formed in endocytosis.

**More information:** Fabrowski, P., Necakov, A.S., Mumbauer, S., Loeser, E., Reversi, A., Streichan, S., Briggs, J.A.G. & De Renzis, S. Tubular endocytosis drives remodelling of the apical surface during epithelial morphogenesis in *Drosophila*. Published online in *Nature Communications* on 7 August 2013. [DOI: 10.1038/ncomms3244](https://doi.org/10.1038/ncomms3244)

Provided by European Molecular Biology Laboratory

Citation: Cells eat themselves into shape (2013, August 9) retrieved 26 April 2024 from <https://phys.org/news/2013-08-cells.html>

This document is subject to copyright. Apart from any fair dealing for the purpose of private study or research, no part may be reproduced without the written permission. The content is provided for information purposes only.