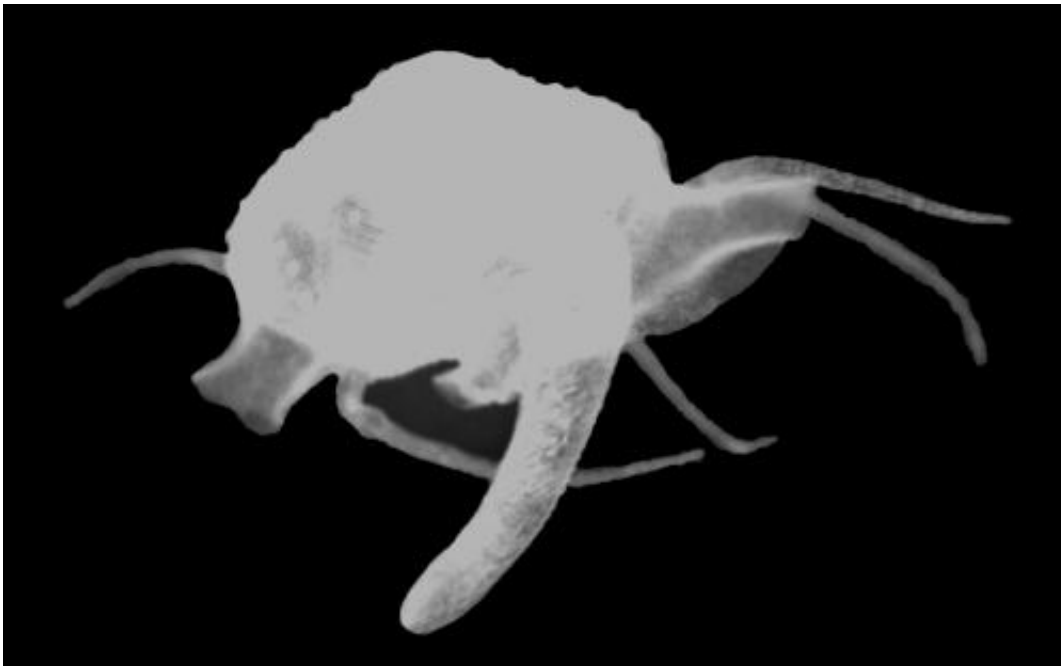


# Where's Waldo? A new alien-like species discovered off California

July 16 2013

---



The following tentacles and foot of *Waldo arthuri* give it an alien appearance.  
Credit: Diarmaid O'Foighil

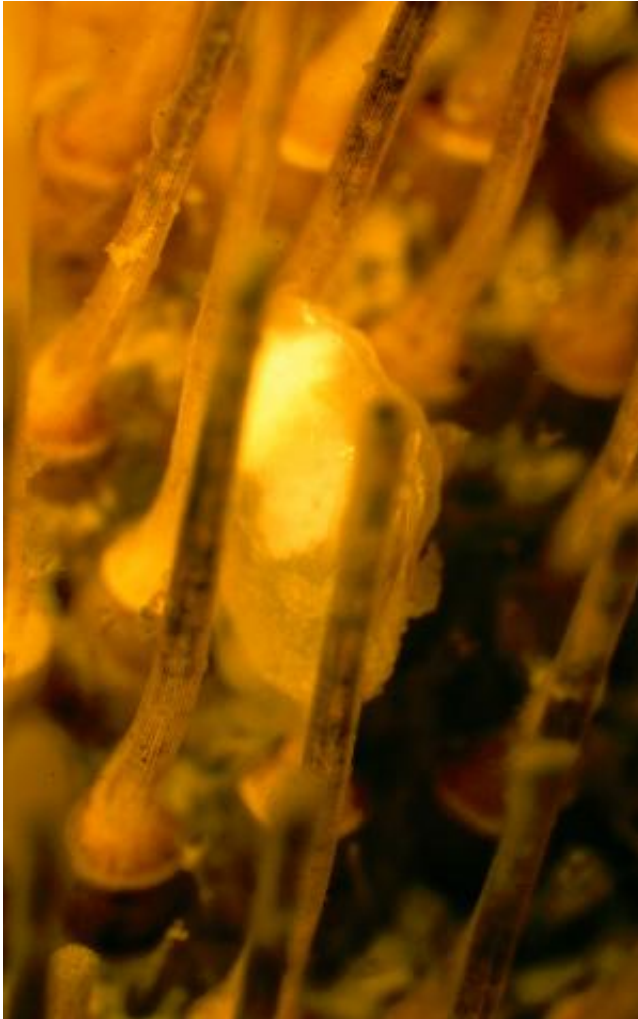
After nearly 25 years of searching, three scientists have finally found *Waldo*. No, not the loveable bespectacled character in children's picture books, but rather an unusual clam discovered off the coast of California and British Columbia.

Paul Valentich-Scott from the Santa Barbara Museum of Natural

History, and Diarmaid Ó Foighil from the University of Michigan, Museum of Zoology first began discussing this unusual clam back in 1989. Valentich-Scott discovered his strange specimens off the coast of Santa Barbara and Morro Bay, California, while Ó Foighil uncovered his while trawling for invertebrates off Vancouver Island, British Columbia.

At a scientific conference Valentich-Scott and Ó Foighil were chatting about [clams](#) during a break in the proceedings. As they were discussing [new discoveries](#), the light went off. They had discovered the same new species, at the same time, but over 1,000 miles apart.

Neither scientist could identify the animal, and both were amazed by its thin, translucent shell and long willowy tentacles. Ó Foighil was able to collect and observe living specimens of the new species. 'We were looking closely at [sea urchins](#) and noticed something crawling on the fine spines covering the urchin body', declared Ó Foighil. 'We were amazed to see that there were minute clams crawling all over the sea urchin.'

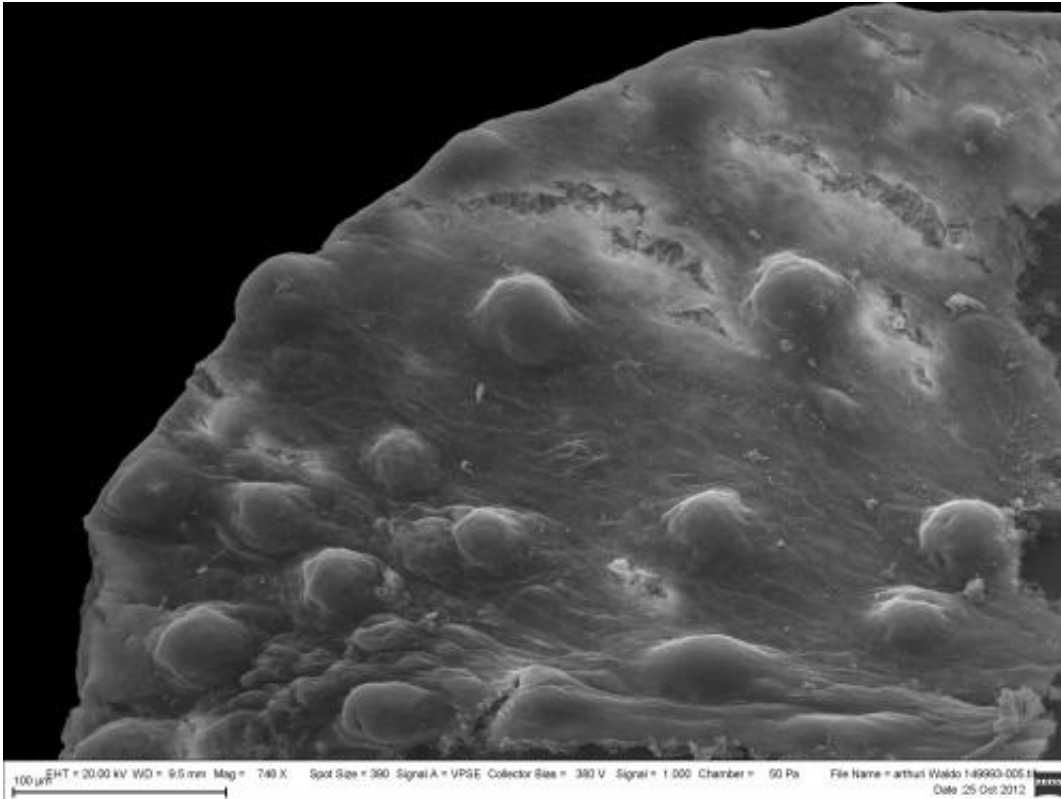


*Waldo arthuri* is shown crawling on a sea urchin spine. Credit: Diarmaid O'Foighil

Thus two decades of research began, trying to understand and formally describe this new animal. 'We never anticipated this would be such a long project', Valentich-Scott exclaimed. 'But every time we started in one direction we hit a wall and needed to begin again.'

Rescue finally came from [doctoral student](#) Jingchun Li at the University of Michigan, Ann Arbor. Li is a specialist in clam DNA. She was able to amplify the DNA of the new species and compare it to other similar

species. 'We were pleased to see the new species was very distinct genetically', said Li. 'However we were surprised to find that its closest relative was from the South Atlantic Ocean off Argentina.' Valentich-Scott and Ó Foighil invited Li to collaborate on the final publication.



This image shows the warty skin covering the thin shell of *Waldo arthuri*. Credit: Paul Valentich-Scott

Valentich-Scott stated, 'This is a very peculiar animal, they only seems to live on the [spines](#) of one type of sea urchin in a commensal relationship. We found it ironic that the new species was in the genus *Waldo* and just couldn't help but ask, "Where's *Waldo*?"'

**More information:** Where's Waldo? A new commensal species,

Waldo arthuri (Mollusca, Bivalvia, Galeommatidae), from the Northeastern Pacific Ocean. *ZooKeys* 316: 67–80, [doi: 10.3897/zookeys.316.4256](https://doi.org/10.3897/zookeys.316.4256)

Provided by Pensoft Publishers

Citation: Where's Waldo? A new alien-like species discovered off California (2013, July 16) retrieved 23 May 2024 from <https://phys.org/news/2013-07-waldo-alien-like-species-california.html>

This document is subject to copyright. Apart from any fair dealing for the purpose of private study or research, no part may be reproduced without the written permission. The content is provided for information purposes only.