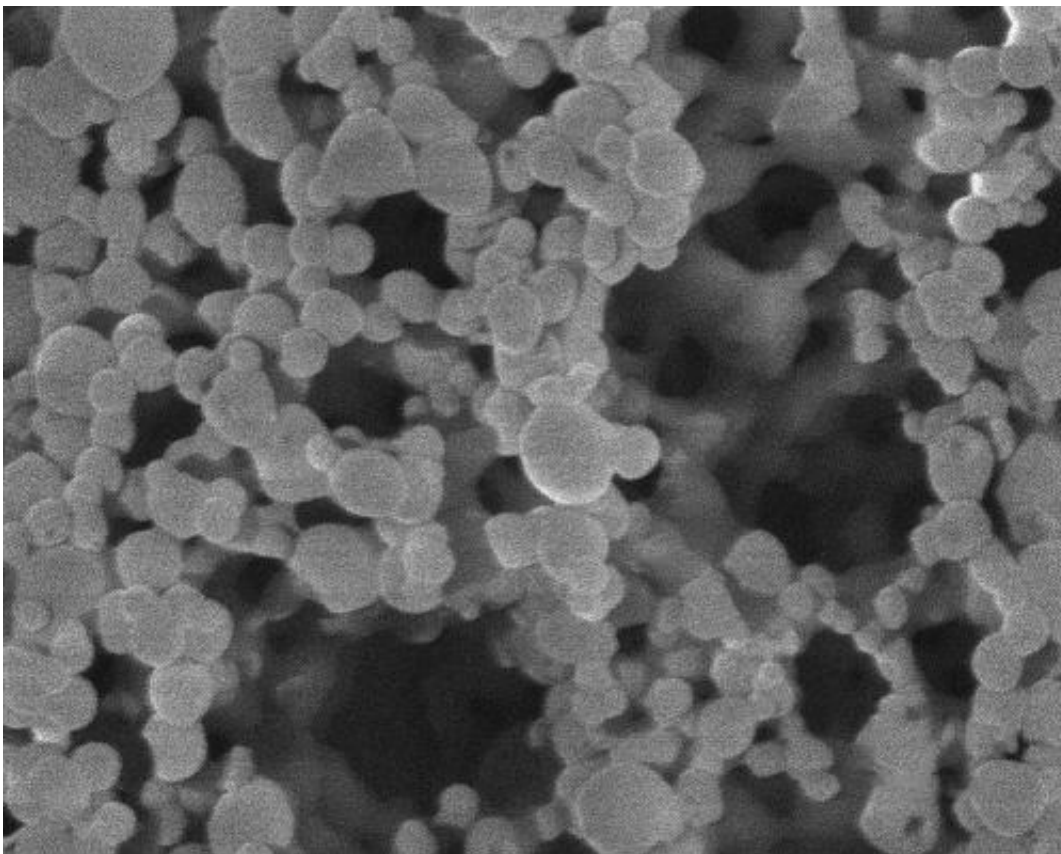


Nanotechnology could help fight diabetes: Injectable nanogel can monitor blood-sugar levels, secrete insulin when needed

May 16 2013, by Anne Trafton



Injectable nanoparticles developed at MIT may someday eliminate the need for patients with Type 1 diabetes to constantly monitor their blood-

sugar levels and inject themselves with insulin.

The nanoparticles were designed to sense glucose levels in the body and respond by secreting the appropriate amount of [insulin](#), thereby replacing the function of [pancreatic islet cells](#), which are destroyed in patients with Type 1 diabetes. Ultimately, this type of system could ensure that blood-sugar levels remain balanced and improve patients' quality of life, according to the researchers.

"Insulin really works, but the problem is people don't always get the right amount of it. With this system of extended release, the amount of drug secreted is proportional to the needs of the body," says Daniel Anderson, an associate professor of chemical engineering and member of MIT's Koch Institute for Integrative [Cancer Research](#) and Institute for [Medical Engineering](#) and Science.

Anderson is the senior author of [a paper](#) describing the new system in a recent issue of the journal *ACS Nano*. Lead author of the paper is Zhen Gu, a former postdoc in Anderson's lab. The research team also includes Robert Langer, the David H. Koch Institute Professor at MIT, and researchers from the Department of Anesthesiology at Boston Children's Hospital.

Mimicking the pancreas

Currently, people with Type 1 diabetes typically prick their fingers several times a day to draw blood for testing their blood-sugar levels. When levels are high, these patients inject themselves with insulin, which breaks down the excess sugar.

In recent years, many researchers have sought to develop insulin-delivery systems that could act as an "[artificial pancreas](#)," automatically detecting glucose levels and secreting insulin. One approach uses hydrogels to

measure and react to glucose levels, but those gels are slow to respond or lack [mechanical strength](#), allowing insulin to leak out.

The MIT team set out to create a sturdy, biocompatible system that would respond more quickly to changes in glucose levels and would be easy to administer.

Their system consists of an injectable gel-like structure with a texture similar to toothpaste, says Gu, who is now an assistant professor of biomedical engineering and molecular pharmaceuticals at the University of North Carolina at Chapel Hill and North Carolina State University. The gel contains a mixture of oppositely charged [nanoparticles](#) that attract each other, keeping the gel intact and preventing the particles from drifting away once inside the body.

Using a modified polysaccharide known as dextran, the researchers designed the gel to be sensitive to acidity. Each nanoparticle contains spheres of dextran loaded with an enzyme that converts glucose into gluconic acid. Glucose can diffuse freely through the gel, so when sugar levels are high, the enzyme produces large quantities of gluconic acid, making the local environment slightly more acidic.

That acidic environment causes the dextran spheres to disintegrate, releasing insulin. Insulin then performs its normal function, converting the glucose in the bloodstream into glycogen, which is absorbed into the liver for storage.

Long-term control

In tests with mice that have [Type 1 diabetes](#), the researchers found that a single injection of the gel maintained normal blood-sugar levels for an average of 10 days. Because the particles are mostly composed of polysaccharides, they are biocompatible and eventually degrade in the

body.

The researchers are now trying to modify the particles so they can respond to changes in glucose levels faster, at the speed of [pancreas](#) islet cells. "[Islet cells](#) are very smart. They can release insulin very quickly once they sense high sugar levels," Gu says.

Before testing the particles in humans, the researchers plan to further develop the system's delivery properties and to work on optimizing the dosage that would be needed for use in humans.

"Clearly longer-term studies are warranted, but from a closed-loop perspective, this is a very clever approach to normalizing blood-[glucose levels](#) in individuals with diabetes, achieved by integrating the glucose sensing with the insulin delivery, much like a natural pancreatic beta cell," says Frank Doyle, a professor of chemical engineering at the University of California at Santa Barbara who was not part of the research team.

The paper is titled "Injectable Nano-Network for Glucose-Mediated Insulin Delivery."

This story is republished courtesy of MIT News (web.mit.edu/newsoffice/), a popular site that covers news about MIT research, innovation and teaching.

Provided by Massachusetts Institute of Technology

Citation: Nanotechnology could help fight diabetes: Injectable nanogel can monitor blood-sugar levels, secrete insulin when needed (2013, May 16) retrieved 25 April 2024 from <https://phys.org/news/2013-05-nanotechnology-diabetes-nanogel-blood-sugar-secrete.html>

This document is subject to copyright. Apart from any fair dealing for the purpose of private

study or research, no part may be reproduced without the written permission. The content is provided for information purposes only.