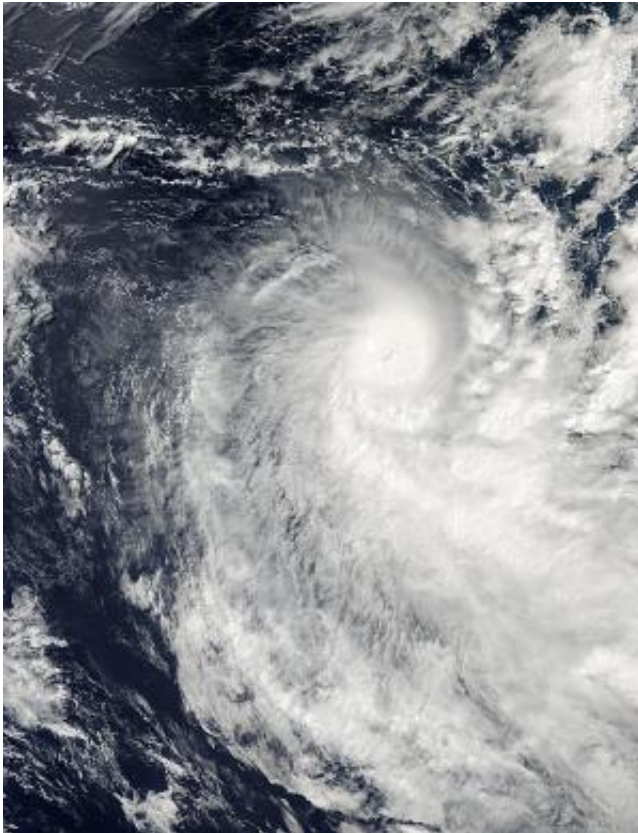


NASA sees Cyclone Victoria developing an eye

April 11 2013



NASA's Aqua satellite passed over Tropical Cyclone Victoria on April 10 at 3:05 a.m. EDT. Victoria with strong thunderstorms around the center of circulation and appears to be developing an eye. Credit: NASA Goddard MODIS Rapid Response Team

Cyclone Victoria continued to intensify overnight from April 9 to April

10, and imagery from NASA's Aqua satellite showed a tighter storm circulation and a possible eye developing.

On April 10, 2013 at 0300 UTC, Victoria had [maximum sustained winds](#) near 60 knots (69 mph/111 kph). Victoria was located near 15.2 south and 103.8 east, about 735 nautical miles northwest of Learmonth, Australia. Victoria was moving to the south-southeast at 8 knots (9 mph/15 kph).

NASA's Aqua satellite passed over Tropical Cyclone Victoria on April 10 at 0705 UTC (3:05 a.m. EDT). The Moderate Resolution Imaging Spectroradiometer (MODIS) instrument aboard Aqua captured this visible image that showed a rounded Tropical Cyclone Victoria with strong thunderstorms around the center of circulation, moving through the Southern Indian Ocean.

According to the Joint [Typhoon Warning Center](#) (JTWC), Victoria is in an area of low wind shear and warm waters. However, an approaching mid-latitude trough of low pressure will increase wind shear and as Victoria heads further south, the waters will cool.

Provided by NASA's Goddard Space Flight Center

Citation: NASA sees Cyclone Victoria developing an eye (2013, April 11) retrieved 2 May 2024 from <https://phys.org/news/2013-04-nasa-cyclone-victoria-eye.html>

This document is subject to copyright. Apart from any fair dealing for the purpose of private study or research, no part may be reproduced without the written permission. The content is provided for information purposes only.