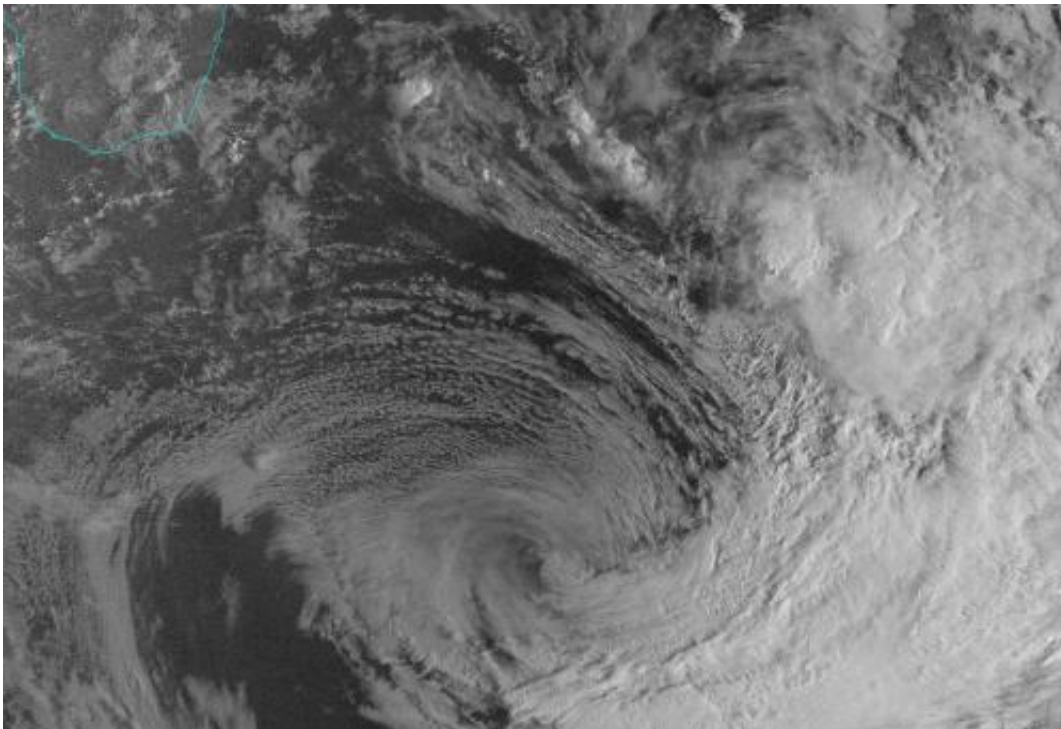


NASA-NOAA's Suomi NPP satellite sees a fading Felleng

February 6 2013



The night-time satellite image was captured by NASA-NOAA's Suomi NPP satellite on Feb. 3 at 11:20 p.m. local time, Indian/Antananarivo) when extra-tropical cyclone Felleng was located south of the Mozambique Channel. The bulk of clouds and showers were pushed east and southeast from wind shear. Credit: NASA/NOAA/UWM, William Straka III

NASA-NOAA's Suomi National Polar-orbiting Partnership (Suomi NPP) satellite captured a night-time image of extra-tropical cyclone

Felleng as it was being battered by wind shear in the Southern Indian Ocean.

The night-time satellite image was captured by the Visible [Infrared Imager](#) Radiometer Suite (VIIRS) aboard NASA-NOAA's Suomi NPP satellite on Feb. 3 at 2120 UTC (11:20 p.m. local time, Indian/Antananarivo/1:40 p.m. EST, U.S.) when Felleng was located south of the [Mozambique Channel](#). The VIIRS image was created at the University of Wisconsin-Madison and showed that the bulk of Felleng's clouds and precipitation were pushed east and southeast of the center of circulation as a result of northwesterly [vertical wind shear](#).

On Monday, Feb. 4 at 0600 UTC (1 a.m. EST) the Joint [Typhoon Warning Center](#) noted that Felleng completed its extra-tropical transition, and the storm's [maximum sustained winds](#) were near 40 knots (46 mph/74 kph). Felleng's center had moved to 31.1 south and 52.8 east, about 605 nautical miles (696.2 miles/1,120 km) south-southwest of La Reunion Island. Felleng continued to move south-southeast in the open waters of the Southern Indian Ocean where it is expected to dissipate in the next couple of days.

The Suomi NPP mission is a bridge between NOAA and NASA legacy Earth observing missions and NOAA's next-generation JPSS. Suomi NPP flies for the first time the groundbreaking new Earth observing instruments that JPSS will use operationally. The first satellite in the JPSS series, JPSS-1, is targeted for launch in 2017. For more information on Suomi NPP, visit: www.nasa.gov/NPP.

Provided by NASA's Goddard Space Flight Center

Citation: NASA-NOAA's Suomi NPP satellite sees a fading Felleng (2013, February 6) retrieved 26 April 2024 from <https://phys.org/news/2013-02-nasa-noaa-suomi-npp-satellite-felleng.html>

This document is subject to copyright. Apart from any fair dealing for the purpose of private study or research, no part may be reproduced without the written permission. The content is provided for information purposes only.