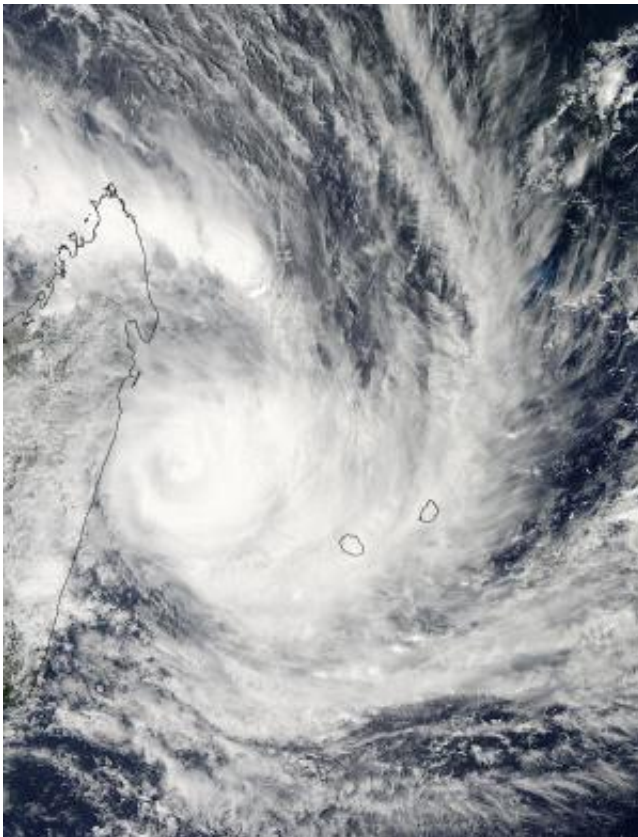


NASA sees cyclone felling squeeze between Madagascar and La Reunion

February 1 2013



On Jan. 31, NASA's Aqua satellite captured an image of Cyclone Felling at 5:05 am EST on Jan. 31 that showed strong thunderstorms continue to wrap around the center of circulation, and Felling's eye is now obscured by high clouds. The western edge of the storm is brushing eastern Madagascar (left) and eastern edge is over La Reunion and Mauritius islands (right). Credit: Credit: NASA Goddard MODIS Rapid Response Team

NASA satellite imagery showed Cyclone Felleng appear to squeeze between Madagascar and La Reunion island as it moves southward in the Mozambique Channel.

On Jan. 31 at 5:05 a.m. EST, The Moderate Resolution Imaging Spectroradiometer (MODIS) aboard NASA's Aqua satellite captured an image of Cyclone Felleng that showed thunderstorms continue to wrap around the center of circulation. The image also showed that Felleng's eye is now obscured by high clouds. The MODIS image showed that the western edge of the storm was brushing eastern Madagascar and eastern edge was over both La Reunion and Mauritius islands. [Infrared satellite imagery](#) revealed that strongest convection has been decreasing throughout the cyclone during the early morning hours of Jan. 31. Although unseen on visible satellite data, [microwave imagery](#) showed an eye feature with the deep convection confined to the eastern semi-circle.

On Jan. 31 at 1500 UTC (10 a.m. EST) Tropical Cyclone Felling was moving through the Mozambique Channel. Felling had [maximum sustained winds](#) near 85 knots (97.8/157.4 kph). Tropical-storm-force winds extend out 140 miles (161 miles/259 km) from the center. It was centered near 18.2 south latitude and 51.1 east longitude, about 300 nautical miles (345 miles/555 km) west-northwest of LaReunion Island. Felling is moving to the southwest at 6 knots (7 mph/11 kph). La Reunion refers to Felling as "07/20122013." Felling is creating very rough seas in the northern Mozambique Channel with wave heights up to 32 feet (9.7 meters).

La Reunion Island has issued a Yellow alert as Felling continues its trek through the channel. The Yellow alert means that residents can expect strong winds, heavy rains and high swells.

The Joint [Typhoon Warning Center](#) expects Felling to continue weakening as it moves in a southeasterly direction.

Provided by NASA's Goddard Space Flight Center

Citation: NASA sees cyclone felling squeeze between Madagascar and La Reunion (2013, February 1) retrieved 2 May 2024 from <https://phys.org/news/2013-02-nasa-cyclone-felling-madagascar-la.html>

This document is subject to copyright. Apart from any fair dealing for the purpose of private study or research, no part may be reproduced without the written permission. The content is provided for information purposes only.